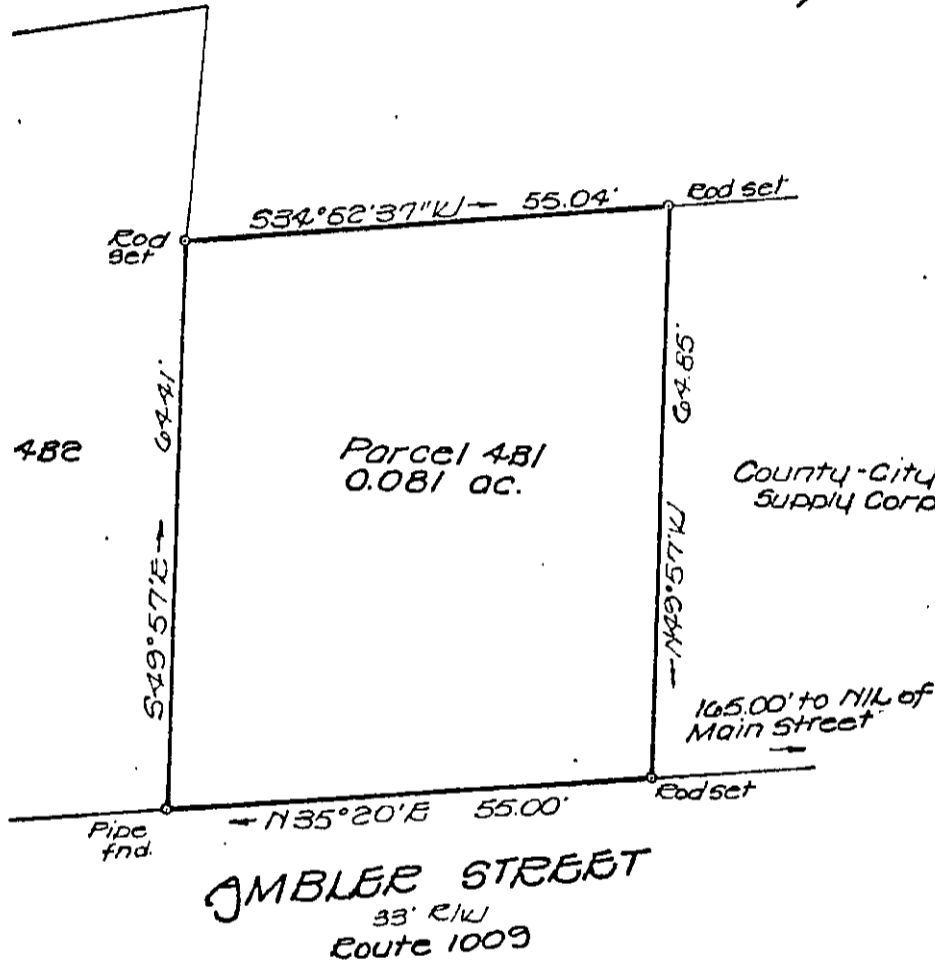


U. S. ROUTE 17

Parcel 482

Parcel 481
0.081 ac.

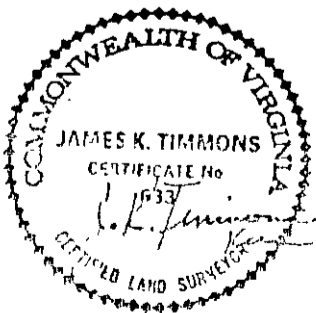
County-City
Supply Corp.



AMBLER STREET
33' R/W
Route 1009

PLAT SHOWING 0.081 ACRES OF
LAND LYING BETWEEN U. S.
ROUTE 17 AND AMBLER STREET
YORKTOWN, VIRGINIA

18A (1) ~~481~~ 481



J. K. TIMMONS & ASSOCIATES, INC.	
ENGINEERS • SURVEYORS • PLANNERS	
711 N. COURTHOUSE RD	RICHMOND, VA
6803 STAPLER HILL RD.	HENRICO CO, VA
14001 STEEPLESTONE DR.	MIDLOTHIAN, VA
DATE: 1-23-69	SCALE: 1"=30'
DRAWN BY: JKT	
CHECKED BY: JKT	
JOB No. 335027	

PREVIOUS JOB No.