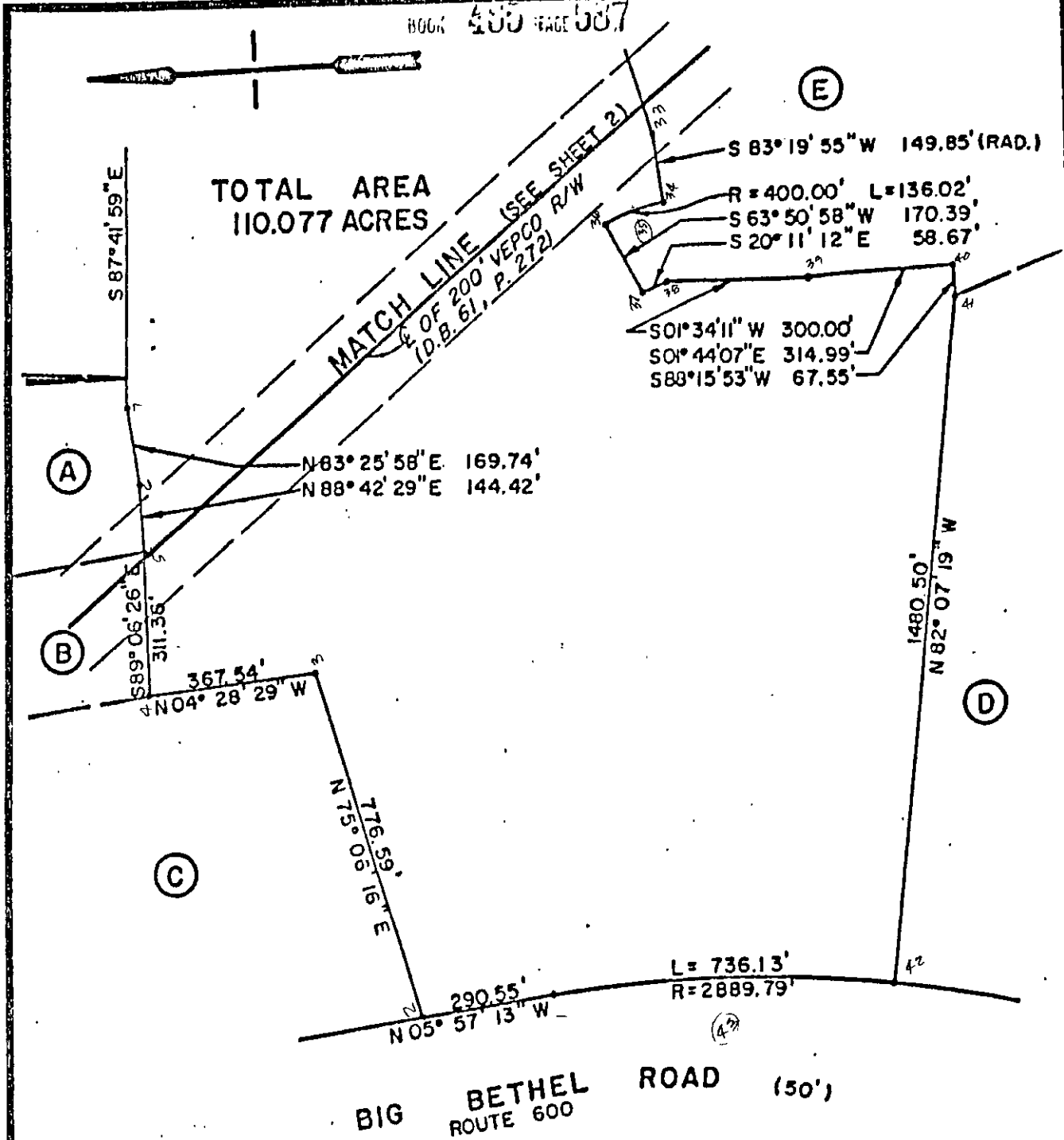


Δ-19-79

185 587

21262.05

BOOK 400 PAGE 587



TOTAL AREA
110.077 ACRES

MATCH LINE (SEE SHEET 2)
C. OF 200' VEPCO R/W
(D.B. 61, P. 272)

(A)

(B)

(C)

(D)

(E)

BIG BETHEL ROAD (50')
ROUTE 600

OWNERSHIPS

NOW OR FORMERLY

- (A) PAUL K. LOTZ, ET UX
(D.B. 392, P. 657)
(D.B. 295, P. 477)
- (B) JACK E. SMITH AND HANS FRANK
(D.B. 228, P. 410)
- (C) BISHOP W.F. SULLIVAN
(P.B. 8, P. 197)
(D.B. 264, P. 700)
- (D) WALTER & EVELYN LOUISE COPELAND
(P.B. 10, P. 186)
(D.B. 201, P. 258-259)
- (E) RUNNING MAN LIMITED PARTNERSHIP
(D.B. 226, P. 272)

PLAT
OF PROPERTY OF
RUNNING MAN LIMITED PARTNERSHIP
(D.B. 226, P. 272)
BETHEL DISTRICT
YORK COUNTY, VIRGINIA

SCALE: 1" = 300' MARCH 26, 1986

BALDWIN AND GREGG, LTD.
ENGINEERS • SURVEYORS • PLANNERS
NORFOLK, VIRGINIA

SHEET 1 of 2

37-144 ✓