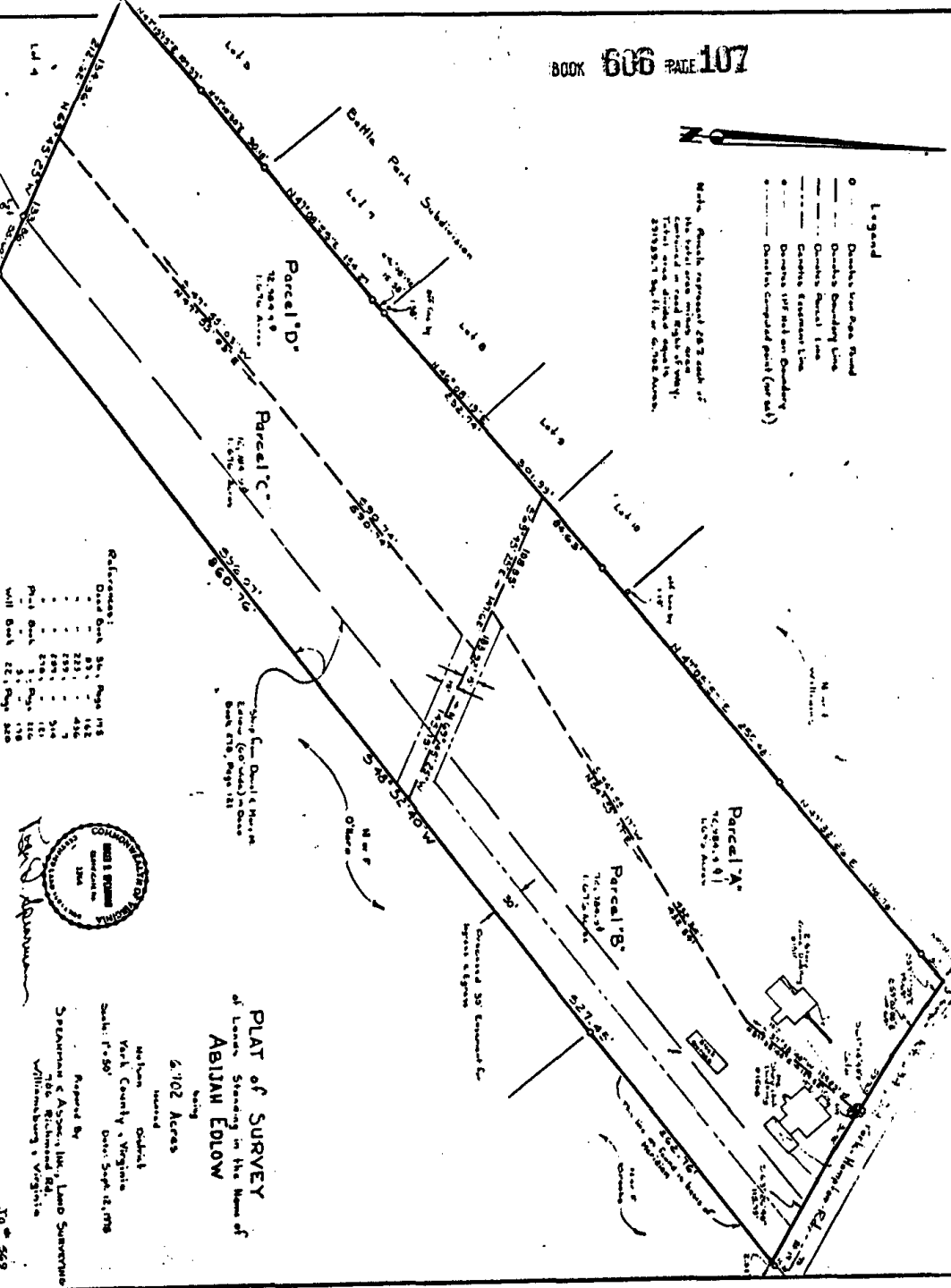




**Legend**

- Double line Open Road
- Double Boundary Line
- Double Parcel Line
- Double Easement Line
- Double 1/2" and on Boundary
- Double computed point (over rail)

Note: Double represents 1/2" each of  
 the boundary lines shown on the  
 map. The double line represents  
 computed on road right of way.  
 (Note: some double lines are  
 1/4" each side of center line.  
 1/2" each side of center line.)



References:

Date Book	Page	Page
1	221	462
2	221	462
3	221	462
4	221	462
5	221	462
6	221	462
7	221	462
8	221	462
9	221	462
10	221	462
11	221	462
12	221	462
13	221	462
14	221	462
15	221	462
16	221	462
17	221	462
18	221	462
19	221	462
20	221	462
21	221	462
22	221	462
23	221	462
24	221	462
25	221	462
26	221	462
27	221	462
28	221	462
29	221	462
30	221	462



**PLAT OF SURVEY**  
 of Lots, Standing in the Name of  
**ABIJAH EDLOW**  
 being  
 6,102 Acres  
 more or less  
 situated  
 within  
 Loudoun  
 County,  
 State of Virginia  
 done Sept. 18, 1795  
 Approved by  
 Jeremiah & Associates, Land Surveyors  
 716 S. Spring Hill Rd.  
 Williamsburg, Virginia