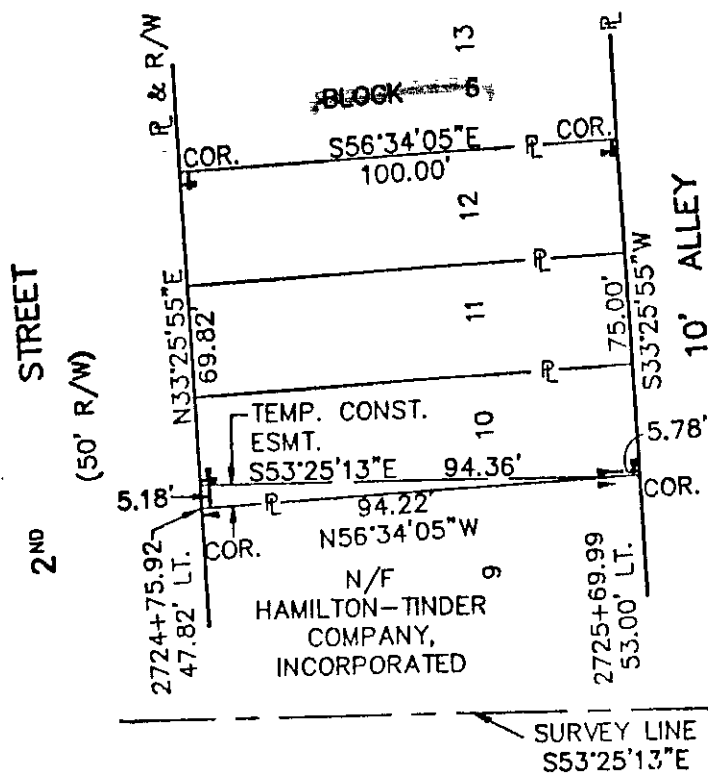
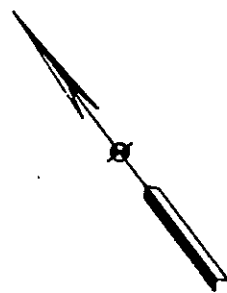


PILGRIM LAND AND DEVELOPMENT COMPANY



AREA OUTSIDE VEPCO R/W:  
TEMP: 0.006 AC. (244 SQ.FT.)

MERIDIAN SOURCE: VIRGINIA COORDINATE SYSTEM  
OF 1927 (SOUTH ZONE)



Virginia Natural Gas  
VNG LATERAL

PLAT TO ACCOMPANY RIGHT-OF-WAY  
AGREEMENT WITH  
PILGRIM LAND AND  
DEVELOPMENT COMPANY

DISTRICT/TOWNSHIP	COUNTY	STATE
BRUTON	YORK	VA

SURVEYED BY SCHNEIDER ENGINEERS

4	3	2	1	1/31/91 REVISED ESMT. & R RSA
---	---	---	---	--

SCALE  
1"=40'

DATE  
6/29/90

NO.  
295

11 A (1) 6 9 + 10