

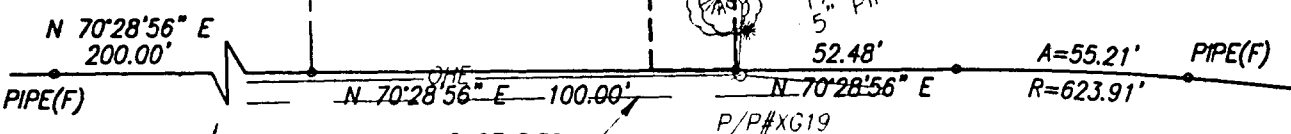
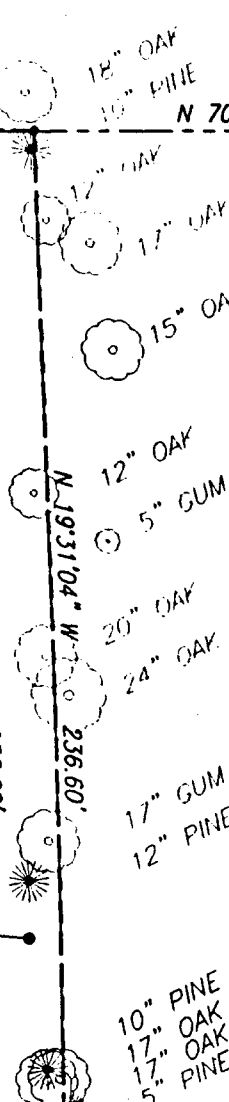
NOW OR FORMERLY
 ROLAND M. NETTLES
 D.B. 307, PG. 843
 P.B. 9, PG. 286
 TAX MAP # 30-224

ROLAND M. NETTLES
 D.B. 307, PG. 841
 P.B. 7, PG. 8
 LOT 53
 TAX MAP # 30T-1-53
 23,660 ± SQ.FT.
 #116 LAMB'S CREEK DR.

NOW OR FORMERLY
 ROLAND M. NETTLES
 TAX MAP # 30T-1-54
 D.B. 542, PG. 97
 P.B. 7, PG. 8
 LOT 54

NOW OR FORMERLY
 C. ANDERSON KING, ET. UX.
 TAX MAP # 30T-1-52
 D.B. 198, PG. 200
 P.B. 7, PG. 8
 LOT 52

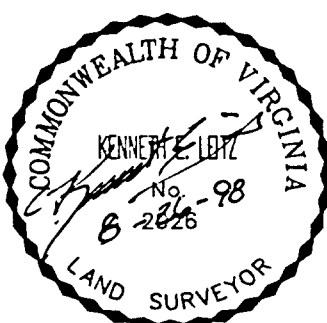
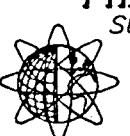
20' PERMANENT
 UTILITY EASEMENT
 HEREBY CONVEYED TO
 YORK COUNTY
 4,732 SQ. FT.



LAMBS CREEK DRIVE
 (VARIABLE WIDTH R/W)

NOTES:

1. THIS PLAT IS INTENDED FOR A DESCRIPTION OF EASEMENT ONLY, AND DOES NOT CONSTITUTE A BOUNDARY SURVEY.
2. THIS SURVEY WAS PERFORMED WITHOUT THE BENEFIT OF A TITLE REPORT, AND MAY NOT REFLECT ALL EASEMENTS OR RESTRICTIONS THAT MAY AFFECT THE PROPERTY.

	REFERENCES: D.B. 198, PG. 200 P.B. 7, PG. 8	PLAT OF EASEMENT FROM: ROLAND M. NETTLES TO: COUNTY OF YORK, VIRGINIA PROJECT: CALTHROP NECK ROAD AREA. SANITARY SEWER IMPROVEMENTS
	MERIDIAN IS BASED ON: VIRGINIA STATE PLANE COORDINATE SYSTEM, SOUTH ZONE, NAD 83 U.S. SURVEY FEET	DATE: 08/26/98 SCALE: 1" = 40'  PRECISION MEASUREMENTS, INC. SURVEYORS • GPS • GIS • MAPPERS 851 SEAHAWK CIRCLE, SUITE 103 VIRGINIA BEACH, VIRGINIA 23452 (757) 368-0945