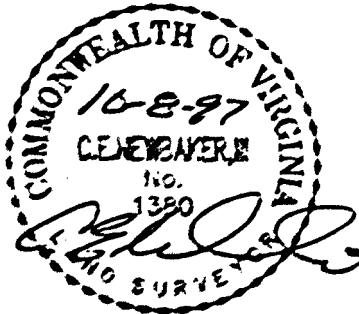
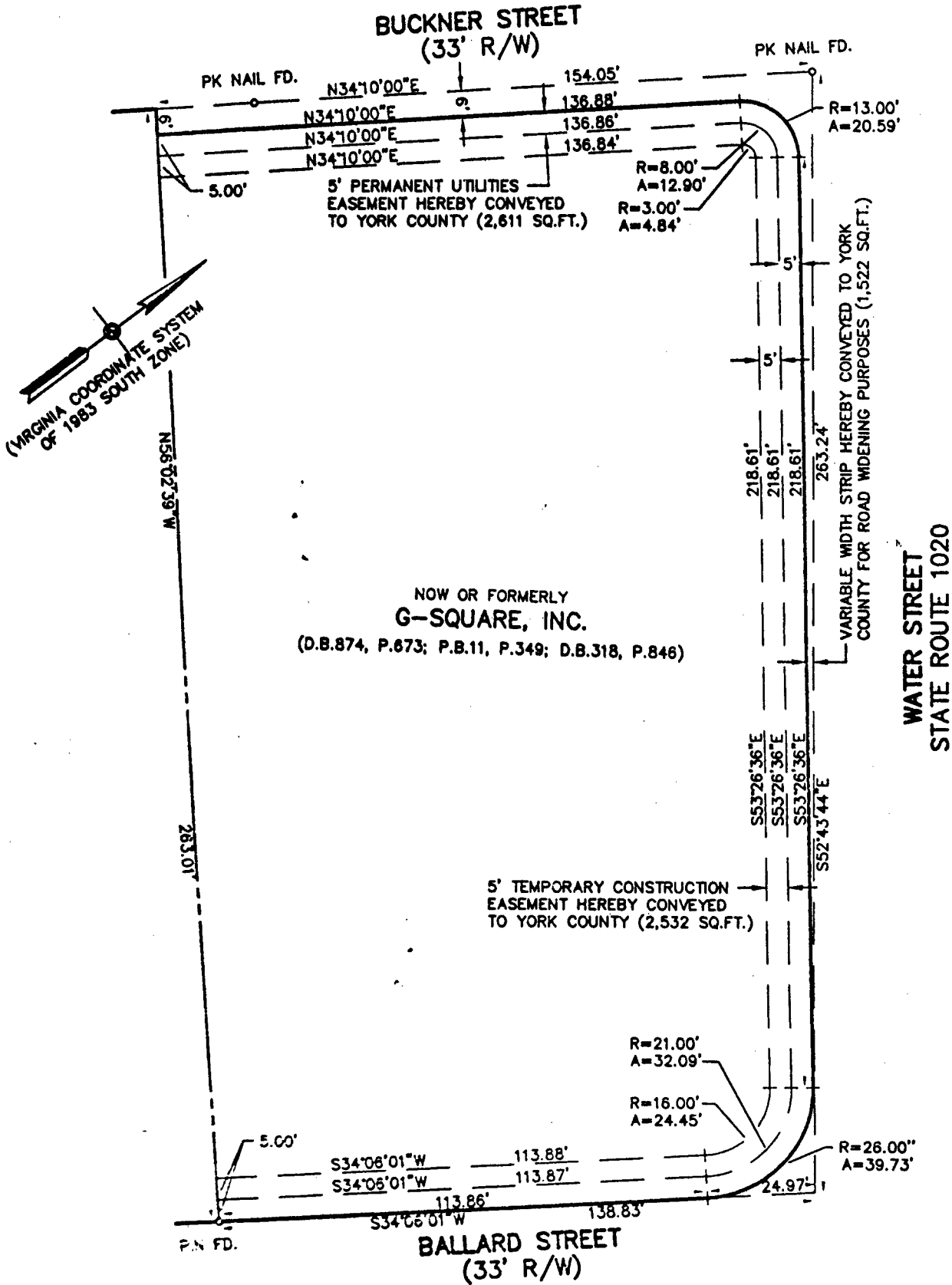


BK1068PG0757



REFERENCES:
NOTES:
PROPERTY IS ASSESSOR'S PARCEL NUMBER 18A-9-A1

PLAT OF RIGHT-OF-WAY & EASEMENT CONVEYANCE
FROM: G-SQUARE, INC.
TO: COUNTY OF YORK, VIRGINIA
PROJECT: WATER STREET IMPROVEMENTS

DATE: AUGUST 29, 1997 | SCALE: 1" = 30'

THE SIRINE GROUP, LTD.
SURVEYORS • ENGINEERS • PLANNERS
P.O. BOX 450, ROUTE 17
WHITE MARSH, VIRGINIA 23183