

\\server-04\pilot\proj\turner\ML\su-server-04\pilot\proj\11267003.dwg

Design File - c:\documents and settings\user\my documents\turner\11267003.dwg
 Design Name - 11267003.dwg
 Layer On - 1:63
 Ref. File - c:\documents and settings\user\my documents\turner\11267003.dwg
 Layer On - 1:63
 Ref. File - c:\documents and settings\user\my documents\turner\11267003.dwg
 Layer On - 1:63
 Ref. File - c:\documents and settings\user\my documents\turner\11267003.dwg
 Layer On - 1:63
 Ref. File - c:\documents and settings\user\my documents\turner\11267003.dwg
 Layer On - 1:63
 Ref. File - c:\documents and settings\user\my documents\turner\11267003.dwg
 Layer On - 1:63
 Ref. File - c:\documents and settings\user\my documents\turner\11267003.dwg
 Layer On - 1:63
 Ref. File - c:\documents and settings\user\my documents\turner\11267003.dwg
 Layer On - 1:63
 Ref. File - c:\documents and settings\user\my documents\turner\11267003.dwg
 Layer On - 1:63
 Ref. File - c:\documents and settings\user\my documents\turner\11267003.dwg
 Layer On - 1:63
 Ref. File - c:\documents and settings\user\my documents\turner\11267003.dwg
 Layer On - 1:63

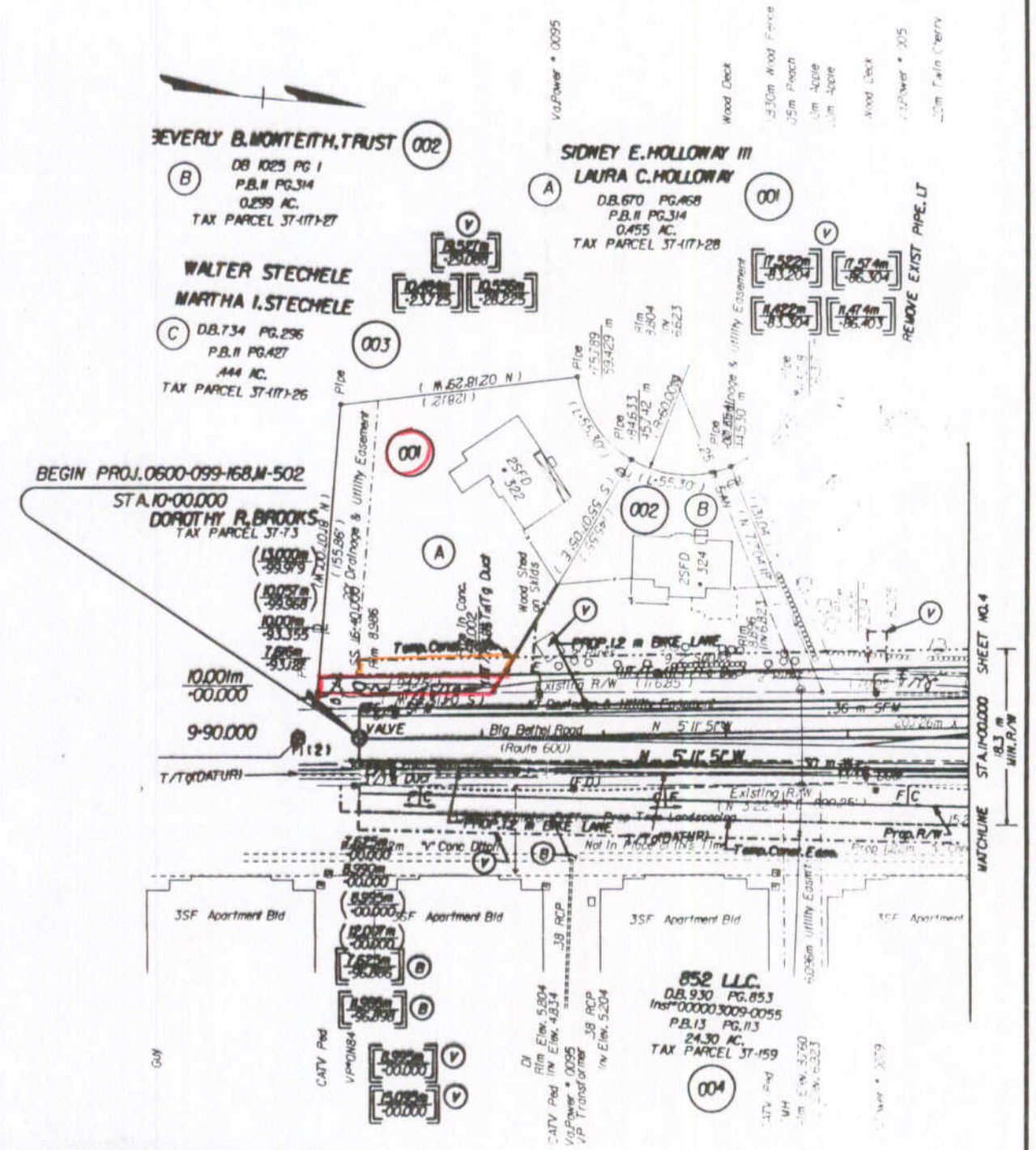
SUFFOLK DISTRICT DESIGN

SURVEYED BY: J.L. BAILES, SUD (757) 925-5086
 DESIGNED BY: J.L. BAILES, SUD (757) 925-5086
 CAD OPERATOR: J.L. BAILES, SUD (757) 925-5086
 REVISED BY: J.L. BAILES, SUD (757) 925-5086

- *** UTILITY OWNERS ***
- Power Poles are Property of Virginia Power
1600 Hamilton Ave.
Portsmouth, Va. 23707-3528
 - Telephone Poles are Property of Bell Atlantic
5701 Cleveland St, 5th Flr.
Virginia Beach, Va. 23462
 - Television Cables are Property of Cox Communication
417 Old York Hampton Hwy
Yorktown, Va. 23692
 - Gas Lines are Property of Va. Natural Gas
3719 Virginia Beach Blvd
Norfolk, Va. 23502-3488
 - Water Lines are Property of Newport News Waterworks
Water Service
2400 Washington Ave.
Newport News, Va. 23602
 - Sewer Force Main is Property of Hampton Roads San. Dept.
P.O. Box 5600
Va. Beach, Va. 23455
 - Sewer Lines are Property of County of York
Environmental Services
201 Goodwin Road
Yorktown, Va. 23692

DESIGN FEATURES RELATING TO CONSTRUCTION OR TO REGULATION AND CONTROL OF TRAFFIC MAY BE SUBJECT TO CHANGE AS DEEMED NECESSARY BY THE DEPARTMENT

REVISED	FHA REGION	STATE	FEDERAL AID PROJECT	ROUTE	STATE PROJECT	SHEET NO.
	3	VA.	STP-5403	600	0600-099-168, M-502 R/W-202	3



NOTES:
 A MINIMUM 18.3M RIGHT OF WAY IS TO BE SECURED BASED ON THE CENTERLINE SHOWN ON THE PLANS, TOGETHER WITH THE RIGHT AND EASEMENT TO USE SUCH ADDITIONAL AREAS AS MAY BE NECESSARY FOR THE PROPER EXECUTION AND MAINTENANCE OF THE WORK AS INDICATED ON THE PLANS.
 BEARINGS BASED ON ASSUMED DATA

- Notes: Figures in parenthesis and dot-dot-dashed lines denote Temporary Easements.
- Note: Figures in brackets and dot-dashed lines denote Permanent Easements.
- (C)..... Denotes Construction Limits In Cuts
- (F)..... Denotes Construction Limits In Fills

- (B) PROPOSED VARIABLE WIDTH UNDERGROUND EASEMENT FOR BELL ATLANTIC
- (V) PROPOSED VARIABLE WIDTH OVERHEAD EASEMENT FOR VIRGINIA POWER

