

SUFFOLK DISTRICT DESIGN UNIT

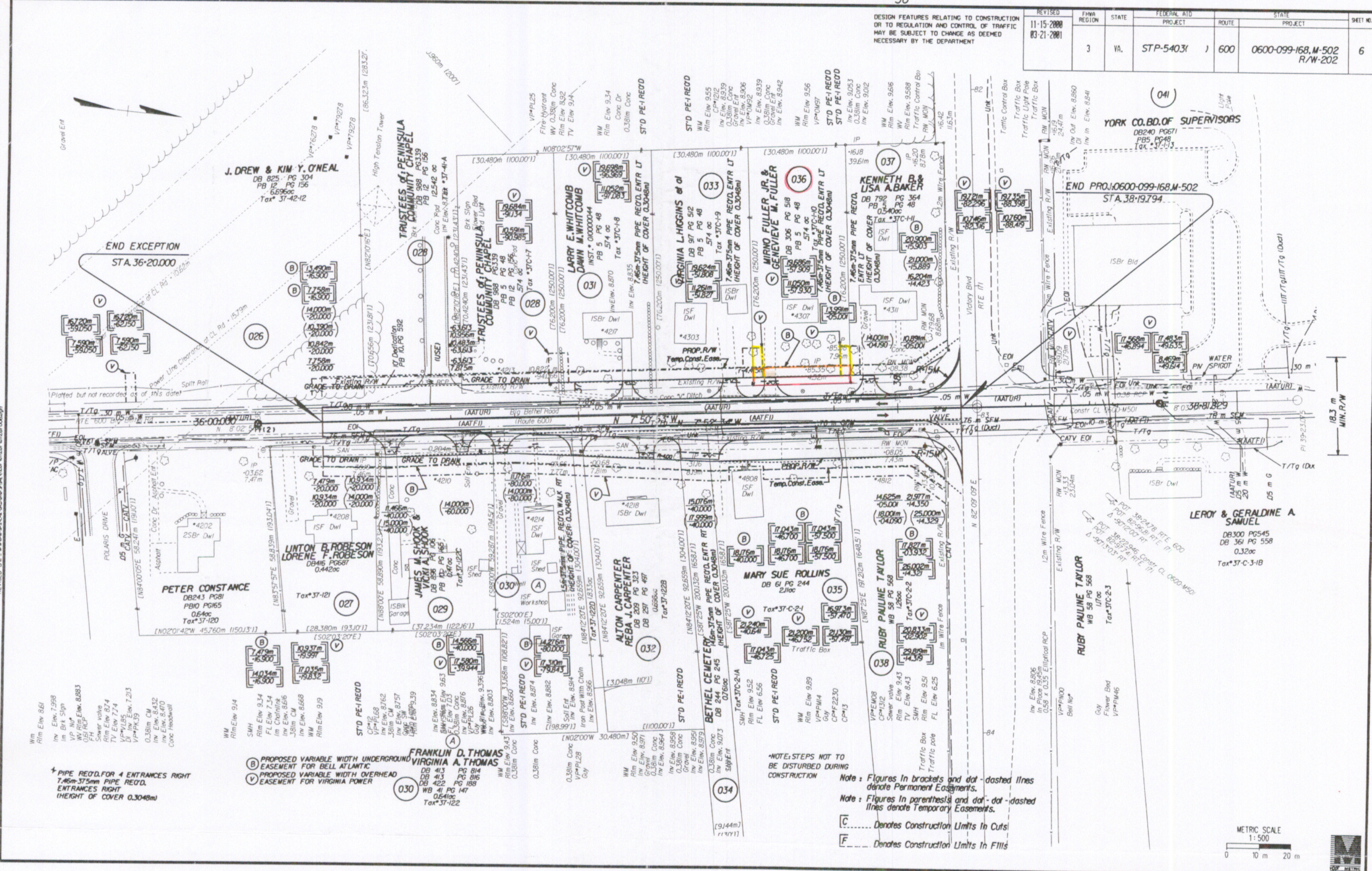
SURVEYED BY: J. & B. BAUTIS, 6/00, (757) 925-1595
 DESIGNED BY: D. R. BENTON, (757) 925-3620
 CAD OPERATOR: D. R. BENTON
 REVISED BY: (blank)

4/20/01 15:28:48

Design Files: c:\documents of ms_jacob\... Ref. Files: c:\documents of ms_jacob\...
 Design: 11-15-2000 03-21-2001

DESIGN FEATURES RELATING TO CONSTRUCTION OR TO REGULATION AND CONTROL OF TRAFFIC MAY BE SUBJECT TO CHANGE AS DEEMED NECESSARY BY THE DEPARTMENT

REVISED	FHWA REGION	STATE	FEDERAL AID PROJECT	ROUTE	STATE PROJECT	SHEET NO.
11-15-2000 03-21-2001	3	VA.	STP-54031	600	0600-099-168, M-502 R/W-202	6



- WM Rim Elev 9.14
- SMH Rim Elev 9.34
- FL Elev 7.34
- Im Chainlink
- Im Elev. 8.6/6
- 38im CM
- Im Elev. 8.6/8
- WM Rim Elev 9.19
- STD PE-1 REOD
- CP#12
- VP#168
- Im Elev. 8.7/62
- 38im CM
- Im Elev. 8.7/57
- VP#126
- Im Elev. 9.3/39
- Im Elev. 8.8/34
- Im Elev. 8.4/32
- Im Elev. 8.4/70
- Conc Headwall

- (B) PROPOSED VARIABLE WIDTH UNDERGROUND EASEMENT FOR BELL ATLANTIC
- (V) PROPOSED VARIABLE WIDTH OVERHEAD EASEMENT FOR VIRGINIA POWER

*NOTE: STEPS NOT TO BE DISTURBED DURING CONSTRUCTION

Note: Figures in brackets and dot-dashed lines denote Permanent Easements.

Note: Figures in parentheses and dot-dashed lines denote Temporary Easements.

(C) Denotes Construction Limits In Cuts

(F) Denotes Construction Limits In Fills

