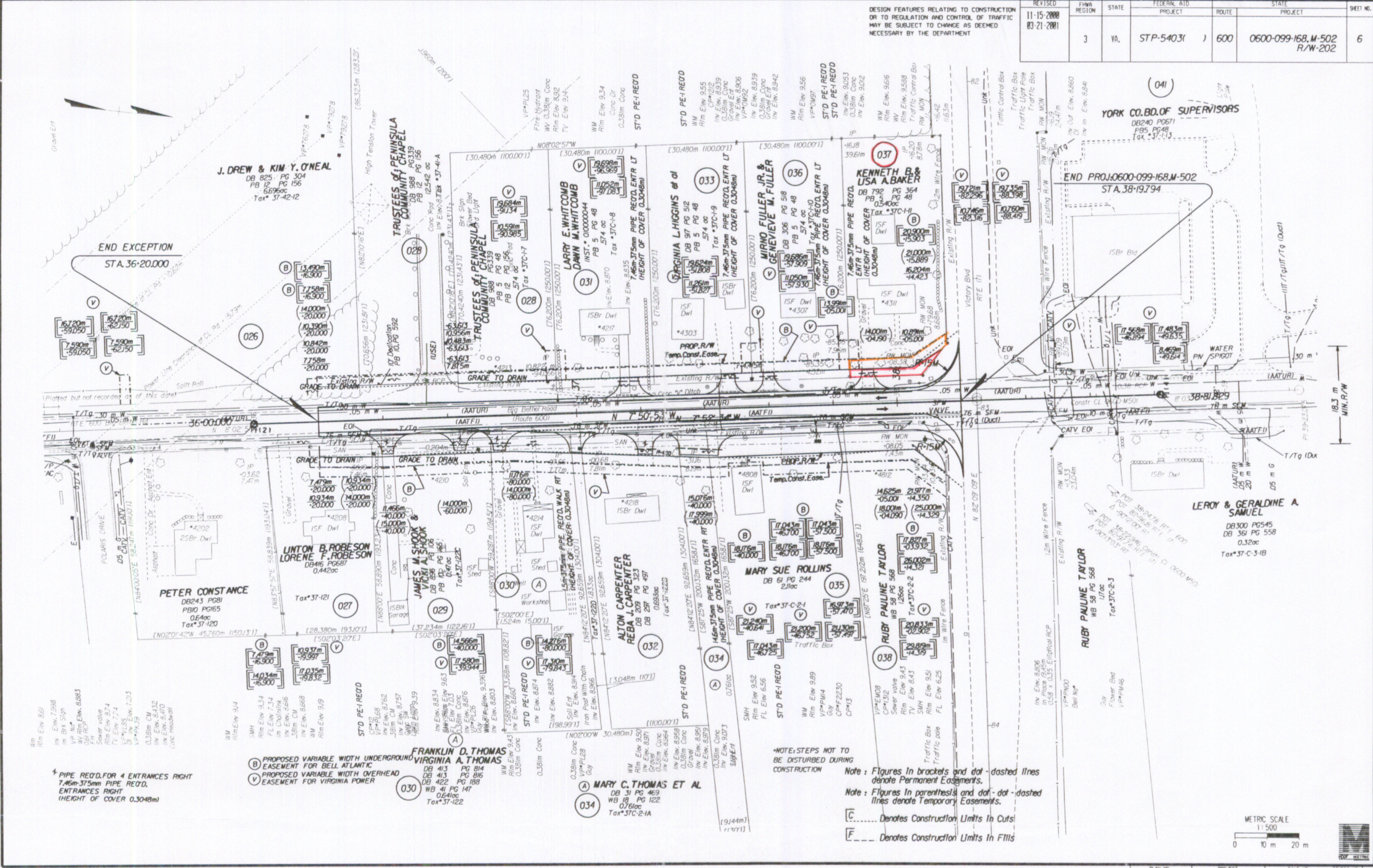


SUFFOLK DISTRICT DESIGN UNIT

Design File - c:\documents of ms\_joachin\10270000\10270000.dwg Ref. File - c:\documents of ms\_joachin\10270000.dwg Levels On - 143 37  
 Design File - c:\documents of ms\_joachin\10270000\10270000.dwg Ref. File - c:\documents of ms\_joachin\10270000.dwg Levels On - 143 38  
 Design File - c:\documents of ms\_joachin\10270000\10270000.dwg Ref. File - c:\documents of ms\_joachin\10270000.dwg Levels On - 143  
 Design File - c:\documents of ms\_joachin\10270000\10270000.dwg Ref. File - c:\documents of ms\_joachin\10270000.dwg Levels On - 143  
 Design File - c:\documents of ms\_joachin\10270000\10270000.dwg Ref. File - c:\documents of ms\_joachin\10270000.dwg Levels On - 143  
 Design File - c:\documents of ms\_joachin\10270000\10270000.dwg Ref. File - c:\documents of ms\_joachin\10270000.dwg Levels On - 143  
 Design File - c:\documents of ms\_joachin\10270000\10270000.dwg Ref. File - c:\documents of ms\_joachin\10270000.dwg Levels On - 143  
 Design File - c:\documents of ms\_joachin\10270000\10270000.dwg Ref. File - c:\documents of ms\_joachin\10270000.dwg Levels On - 143

DESIGN FEATURES RELATING TO CONSTRUCTION OR TO REGULATION AND CONTROL OF TRAFFIC MAY BE SUBJECT TO CHANGE AS DEEMED NECESSARY BY THE DEPARTMENT

REVISED	FHA REGION	STATE	FEDERAL AID PROJECT	ROUTE	STATE PROJECT	SHEET NO.
11-15-2000 03-21-2001	3	VA	STP-54031	600	0600-099-168, M-502 R/W-202	6



SURVEYED BY: J. S. BOUTON, 0102 - (757) 925-1595  
 DESIGNED BY: J. S. BOUTON, (757) 925-1595  
 CAD OPERATOR: J. S. BOUTON  
 REVISED BY: J. S. BOUTON, (757) 925-1595

6/12/03 07:55:47