

SUFFOLK DISTRICT DESIGN UNIT

SURVEYED BY: J. S. BAILEY, 6900 (77) 985-3556
DESIGNED BY: D. R. BENTON, (77) 982-3630
CADD OPERATOR: G. S. BENTON
REVISED BY: (DATE) (BY) (REASON)

4/20/01 15:23:48

Design File: -\documentof\...
Design User: -15459-62

Ref File: -\documentof\...
Layers On: -163

Ref File: -\documentof\...
Layers On: -15552-9

Ref File: -\documentof\...
Layers On: -16559

Ref File: -\documentof\...
Layers On: -163

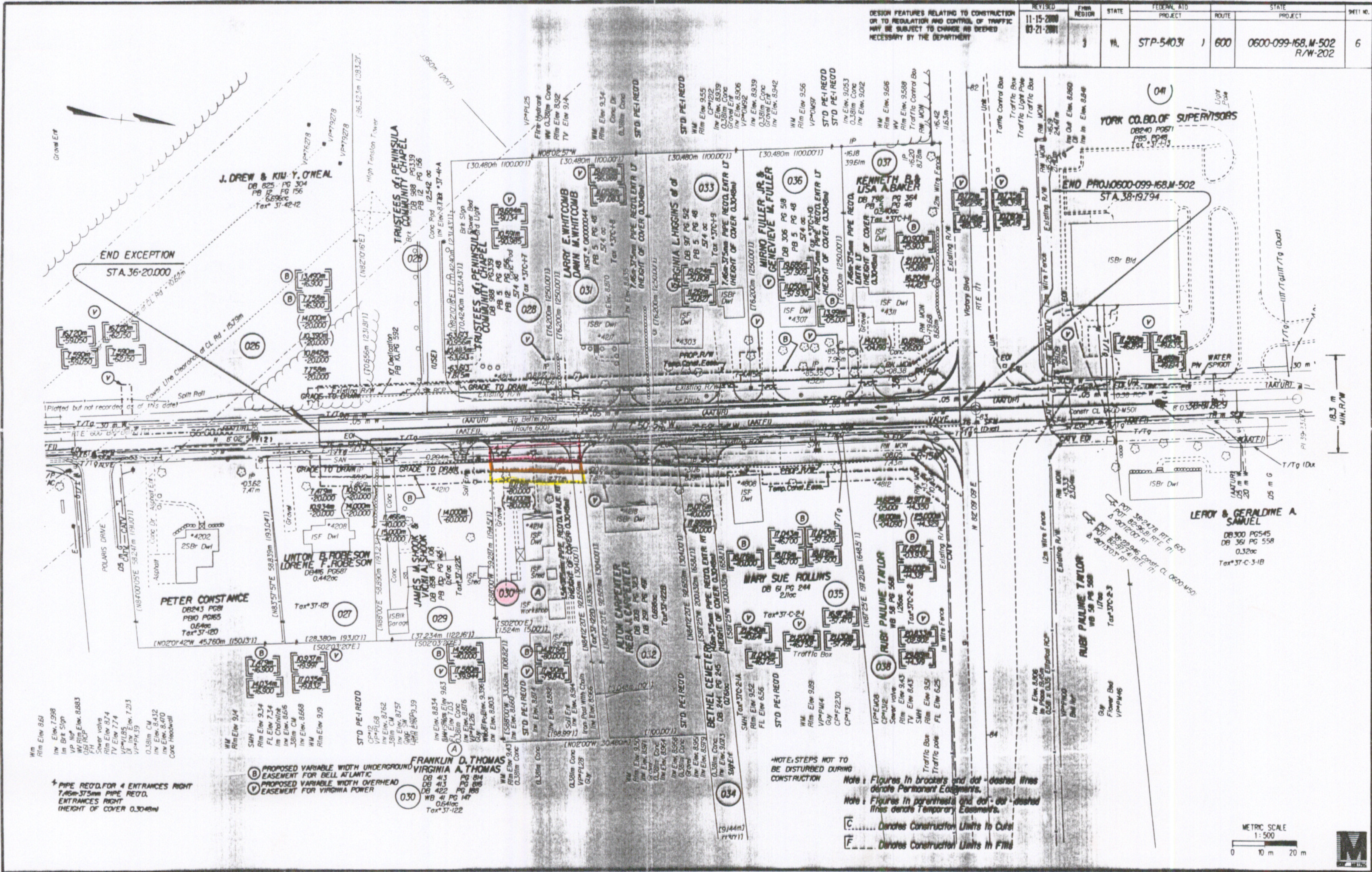
Ref File: -\documentof\...
Layers On: -163

Ref File: -\documentof\...
Layers On: -163

Ref File: -\documentof\...
Layers On: -163

Ref File: -\documentof\...
Layers On: -163

Ref File: -\documentof\...
Layers On: -163



REVISION	FROM REGION	STATE	FEDERAL AID PROJECT	ROUTE	STATE PROJECT	SHEET NO.
11-15-2000 03-21-2001	3	VA	STP-54031	600	0600-099-168-M-502 R/W-202	6

DESIGN FEATURES RELATING TO CONSTRUCTION OR TO REGULATION AND CONTROL OF TRAFFIC MAY BE SUBJECT TO CHANGE AS DEEMED NECESSARY BY THE DEPARTMENT

YORK CO. Bd. OF SUPERVISORS
08240 PG 671
PB 5 PG 619
Tax 37-1-11

END PROJ. 0600-099-168-M-502
STA. 38+19.794

ISBr Bid

WATER SPOGOT

ISBr Dwl

ISBr Dwl

ISBr Dwl

ISBr Dwl

ISBr Dwl

ISBr Dwl

ISBr Dwl

ISBr Dwl

ISBr Dwl

ISBr Dwl

ISBr Dwl

ISBr Dwl

ISBr Dwl

ISBr Dwl

ISBr Dwl

ISBr Dwl

ISBr Dwl

ISBr Dwl

ISBr Dwl

ISBr Dwl

ISBr Dwl

ISBr Dwl

ISBr Dwl

18.3 m
MIN. R/W

WM Rim Elev 9.4
IN Elev 9.5
IM Brk Sign
VP No
WM Rim Elev 8.883
QD RCP
Sewer Valve
Rim Elev 8.74
TV Elev 7.74
V Elev 7.74
DM Elev 7.213
VP-PK 39
0.30m CM
IN Elev 8.432
IN Elev 8.470
Conc Footwall

(B) PROPOSED VARIABLE WIDTH UNDERGROUND EASEMENT FOR BELL ATLANTIC
(V) PROPOSED VARIABLE WIDTH OVERHEAD EASEMENT FOR VIRGINIA POWER

**FRANKLIN D. THOMAS
VIRGINIA A. THOMAS**
DB 413 PG 614
DB 413 PG 615
DB 422 PG 188
WB 41 PG 147
0.541cc
Tax 37-1-22

NOTE: STEPS NOT TO BE DISTURBED DURING CONSTRUCTION

Note: Figures in brackets and dot-dashed lines denote Permanent Easements.

Note: Figures in parenthesis and dot-dash lines denote Temporary Easements.

[C] Denotes Construction Units to Cuts

[F] Denotes Construction Units in Fills

