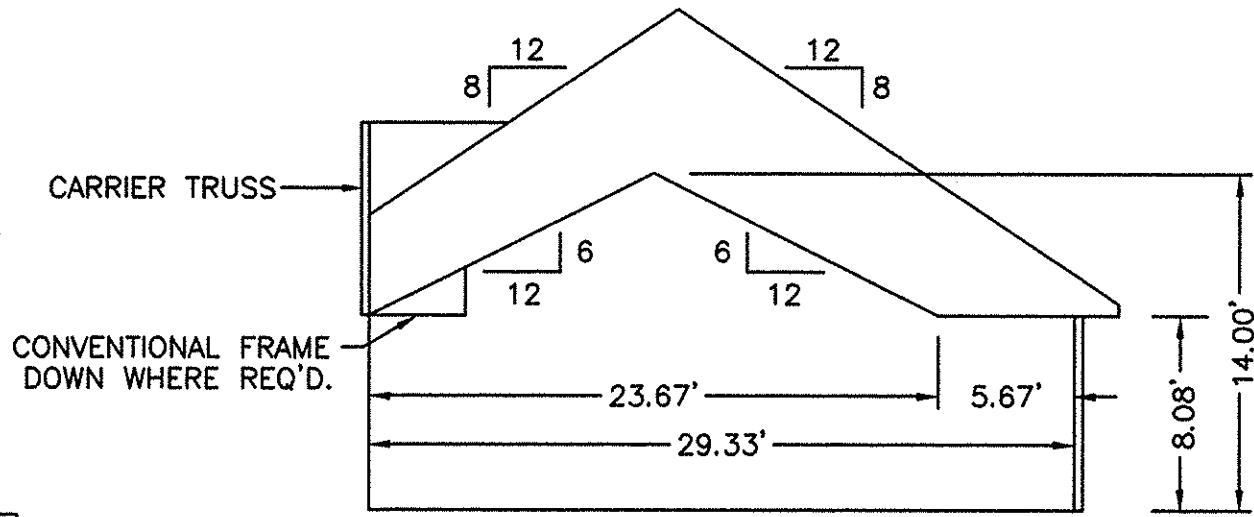
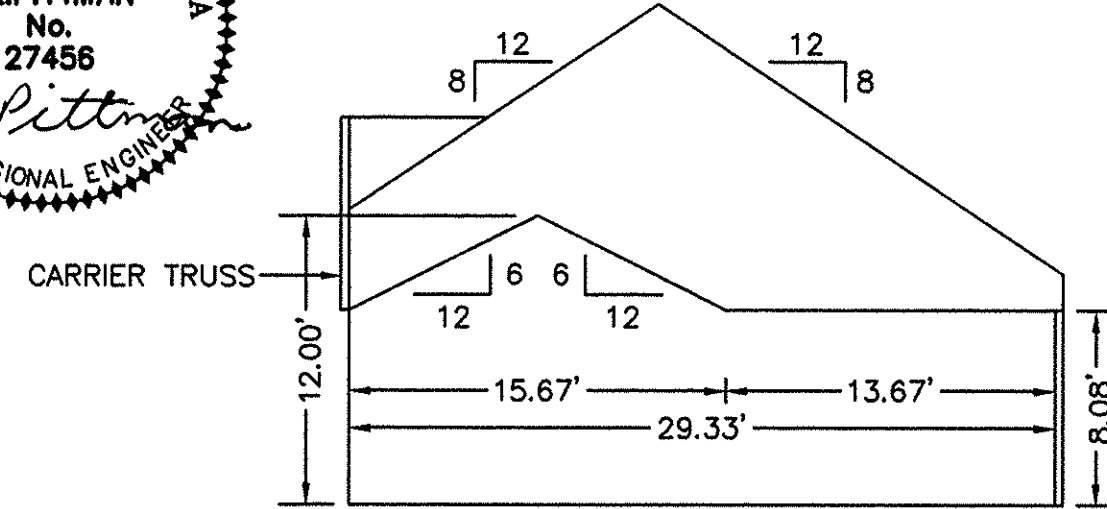


THE UNDERSIGNED CERTIFIES THAT THIS PLAN IS ACCURATE AND COMPLIES WITH THE PROVISIONS OF THE CODE OF VIRGINIA SECTION 55-79.58 (b) AND ALL UNITS DEPICTED HEREON HAVE BEEN SUBSTANTIALLY COMPLETED.

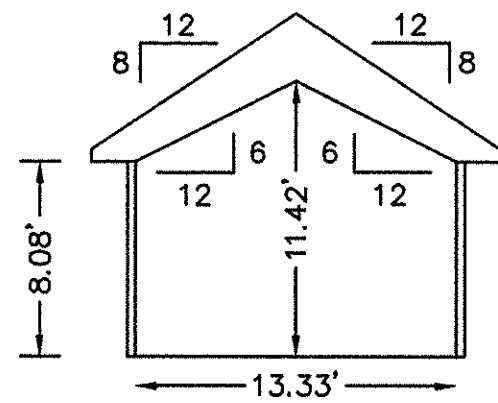
SIGNED: *C.L. Pittman* DATE: 10/23/2001  
C.L. PITTMAN, P.E.



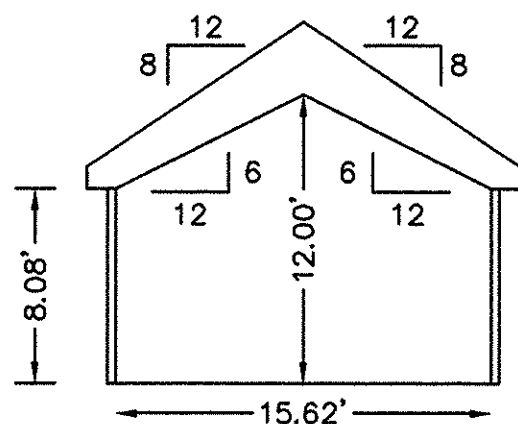
SECTION F-F



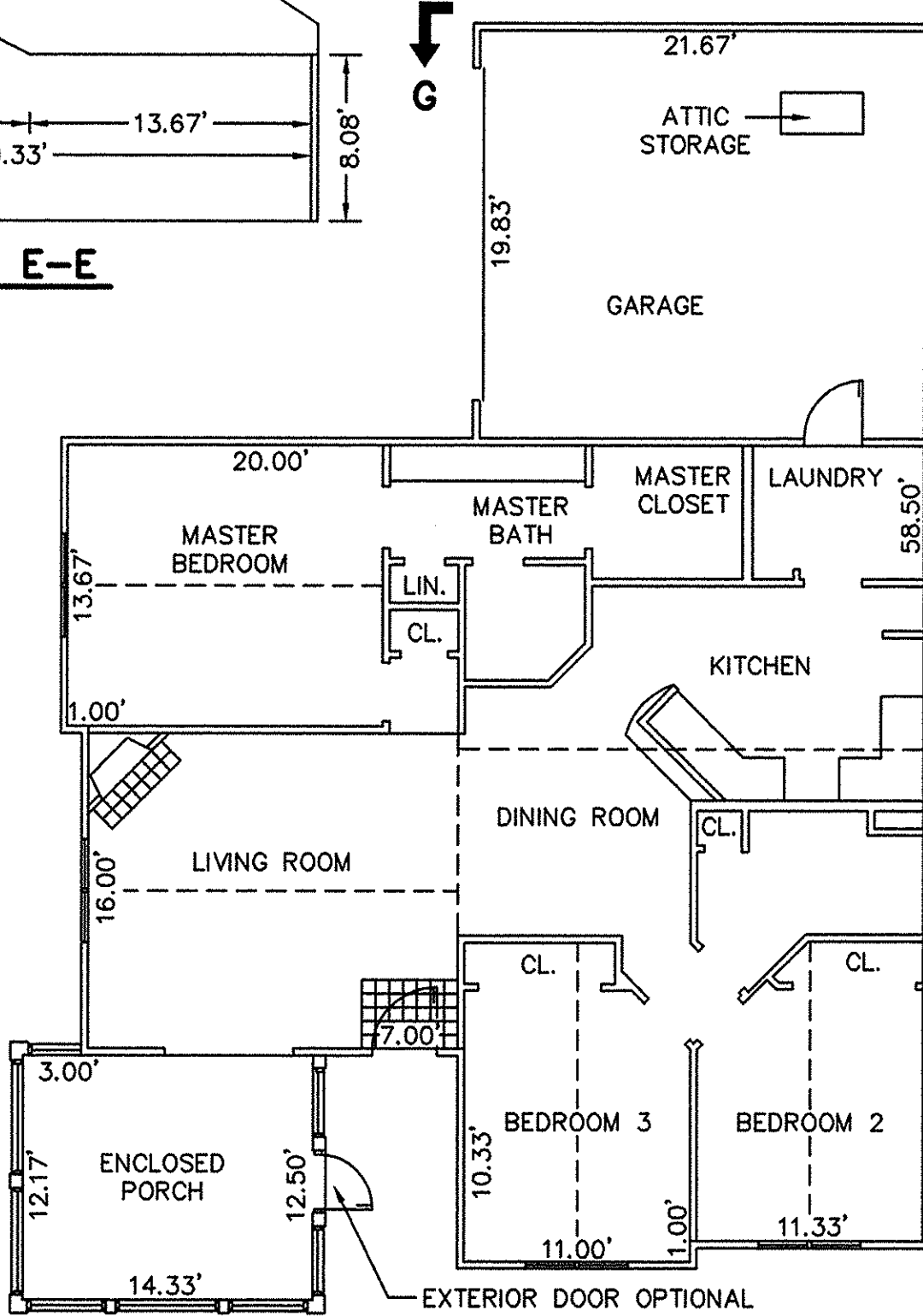
SECTION E-E



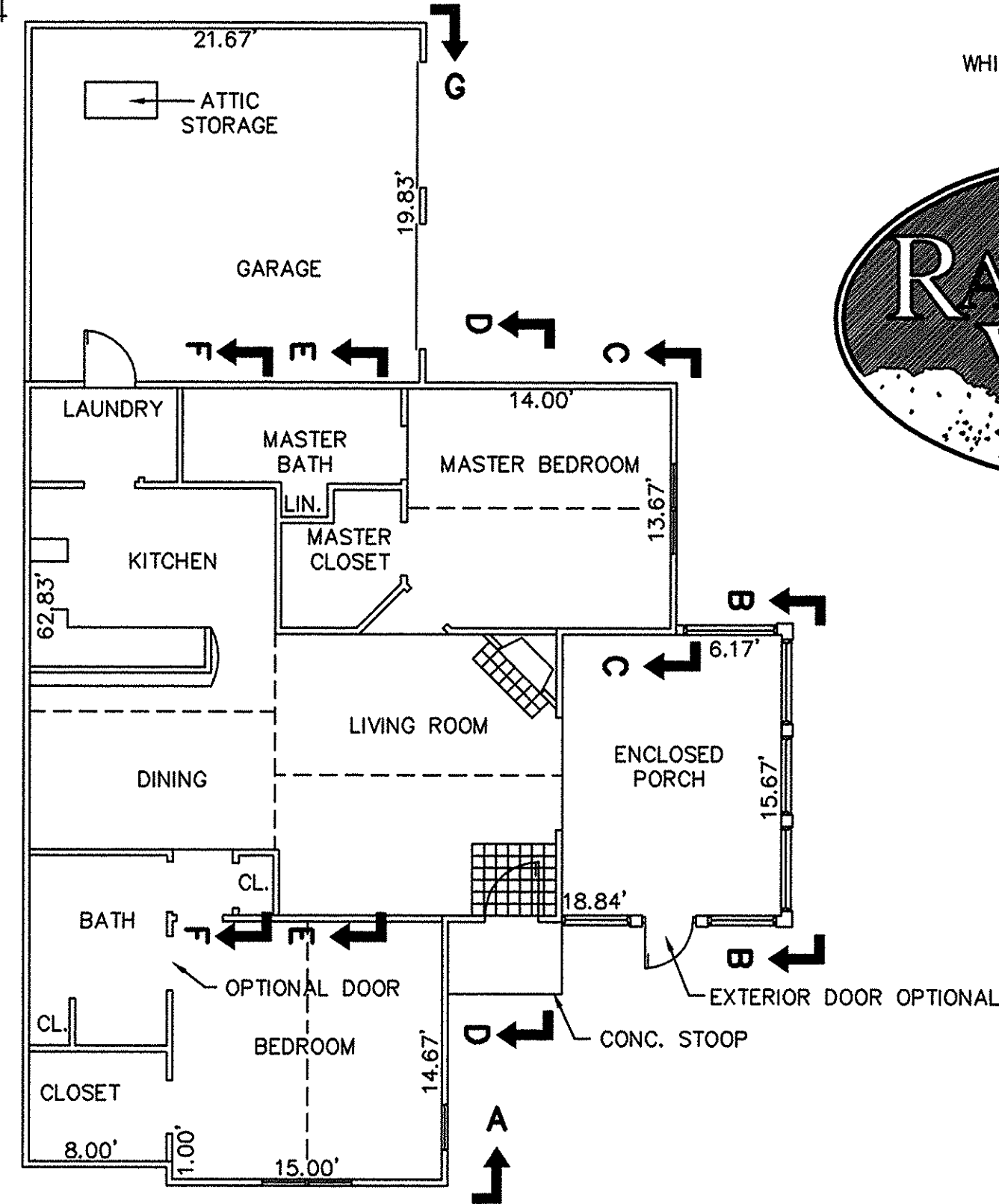
SECTION C-C



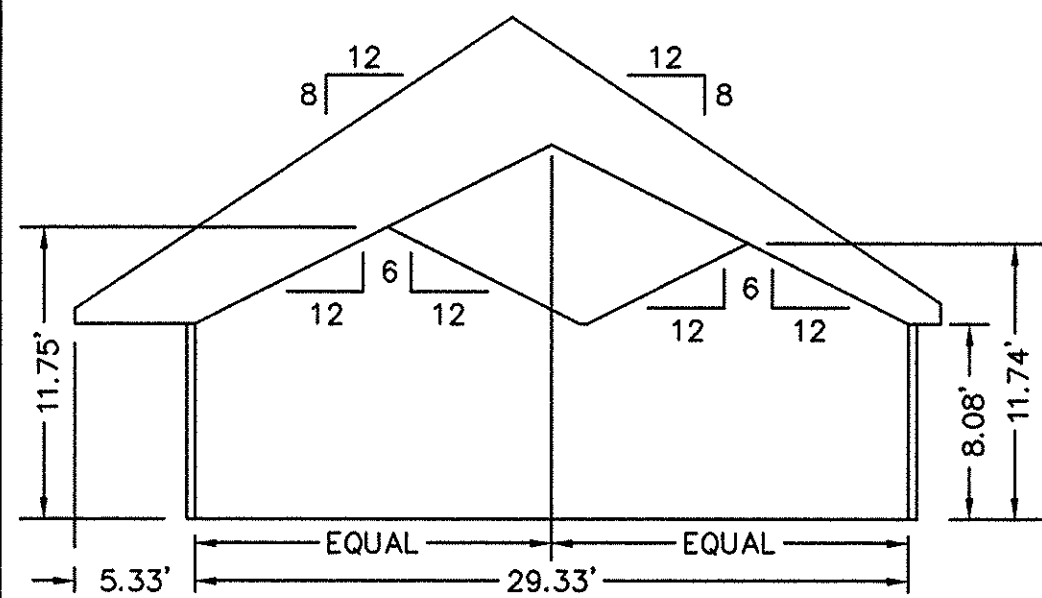
SECTION B-B  
ENCLOSED PORCH



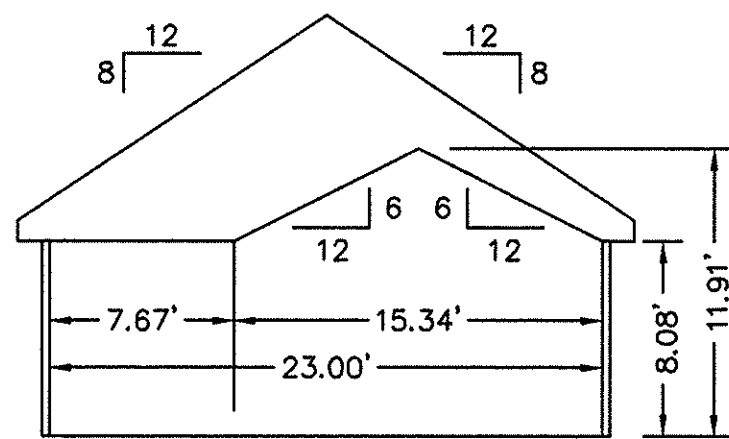
BUILDING 24-2 & 24-4 - CANTERBURY  
FLOOR PLAN  
W/ ENCLOSED PORCH



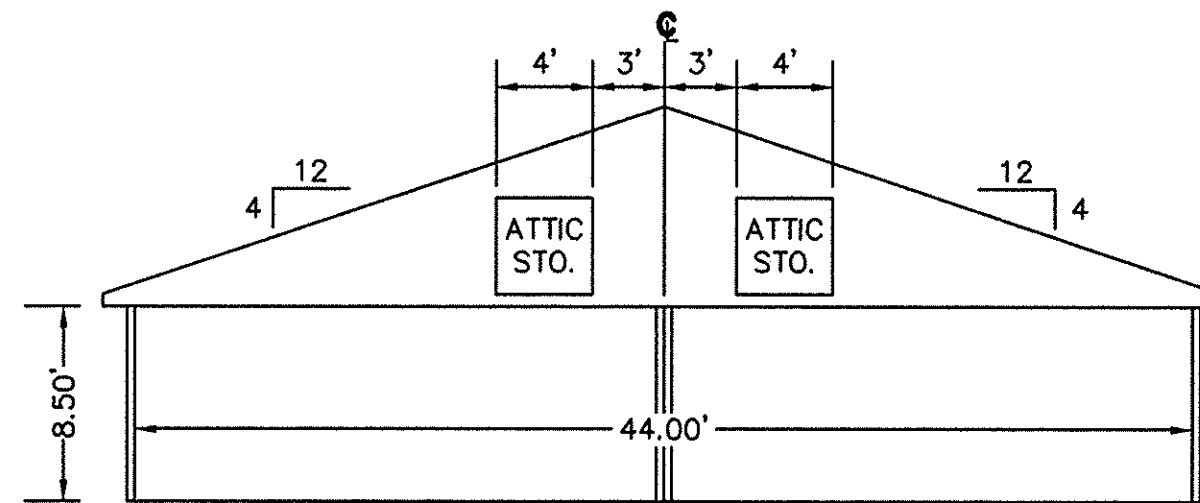
BUILDING 24-1 & 24-3 - ABBEY  
FLOOR PLAN  
W/ ENCLOSED PORCH



SECTION D-D



SECTION A-A



SECTION G-G  
GARAGE

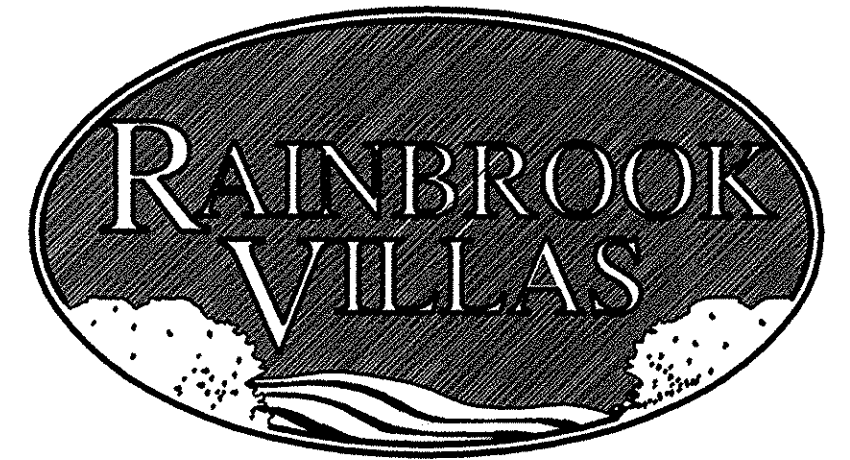
EXHIBIT "D"  
PLAT OF  
RAINBROOK VILLAS  
A CONDOMINIUM  
PHASE XI  
SHEET 3 OF 5

GRAFTON DISTRICT - COUNTY OF YORK, VIRGINIA  
SCALE: 1/8" = 1'-0" SEPTEMBER 7, 2001



GRAPHIC SCALE

THE SIRINE GROUP, LTD.  
SURVEYORS • ENGINEERS • PLANNERS  
4794 GEORGE WASHINGTON MEMORIAL HIGHWAY  
U.S. ROUTE 17  
P.O. BOX 450  
WHITE MARSH, VIRGINIA 23183



APPROVED:  
YORK COUNTY BOARD OF SUPERVISORS

BY: *Al Maddalena*

DATE: 10/24/01

NOTES:  
1. ALL BUILDING DIMENSIONS SHOWN HEREON ARE INTERIOR DIMENSIONS AND ARE IN FEET.

STATE OF VIRGINIA

COUNTY OF YORK

IN THE CLERK'S OFFICE OF THE CIRCUIT COURT FOR THE COUNTY OF YORK THE 24 DAY OF October 2001, THIS PLAT WAS PRESENTED AND ADMITTED TO RECORD AS THE LAW DIRECTS IN PLAT BOOK \_\_\_\_\_, PAGE \_\_\_\_\_.

LYNN S. JENKINS, CLERK  
By: *Natalie C. Owens*  
Dep. CLERK