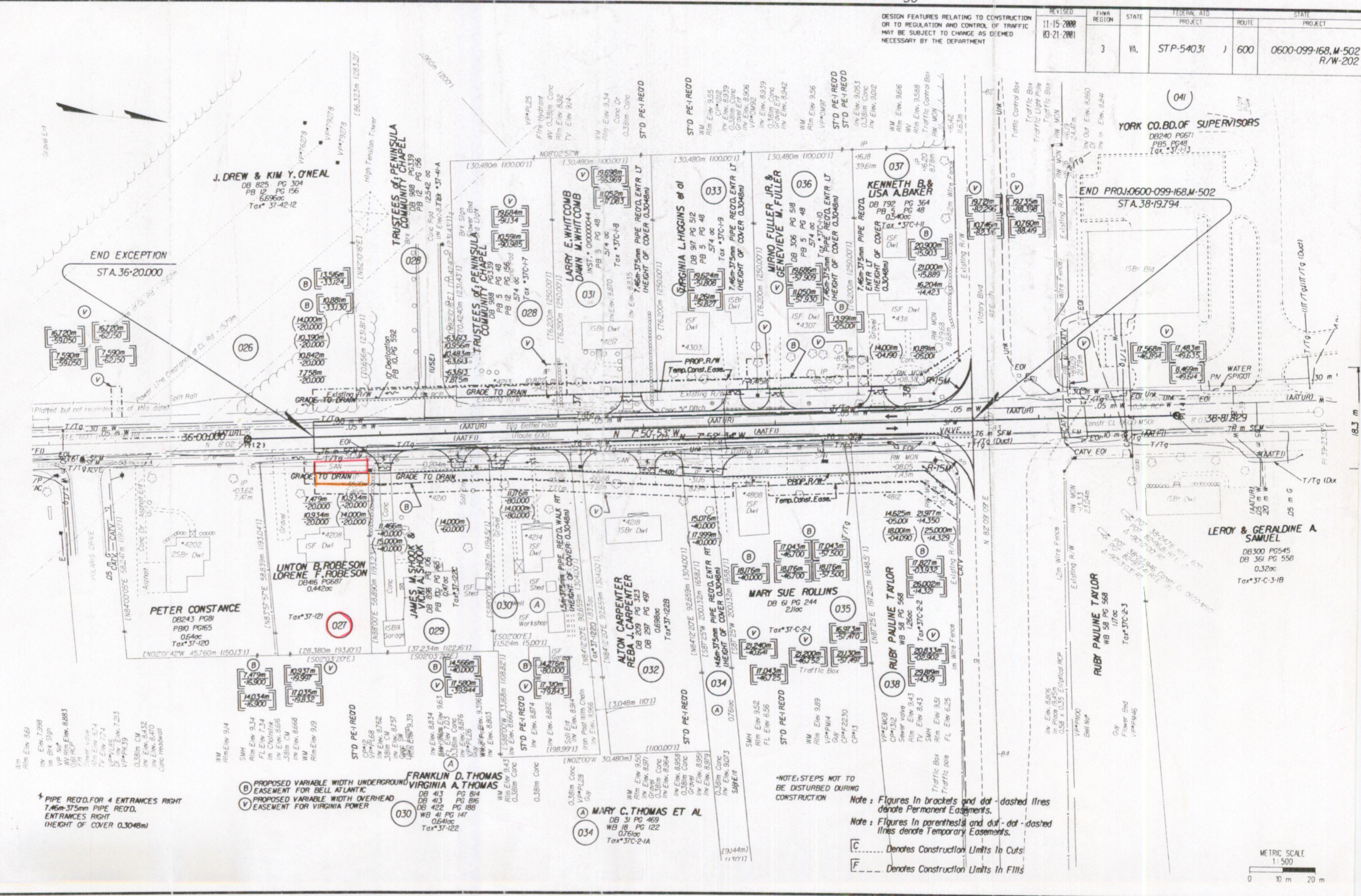


SUFFOLK DISTRICT DESIGN UNIT

Design Files - documents of no. ... Ref. File - documents of no. ...

Table with columns: DESIGN FEATURES RELATING TO CONSTRUCTION OR TO REGULATION AND CONTROL OF TRAFFIC MAY BE SUBJECT TO CHANGE AS DEEMED NECESSARY BY THE DEPARTMENT. REVISIONS: 11-15-2000, 03-21-2001. FEDERAL AID PROJECT: STP-54031. ROUTE: 600. STATE PROJECT: 0600-099-168, M-502 R/W-202.



SURVEYED BY: ... SUPERSEDED BY: ... DESIGNED BY: ... CADD OPERATOR: ... REVISED BY: ...

* PIPE RECD. FOR 4 ENTRANCES RIGHT 7.46m-375mm PIPE RECD. ENTRANCES RIGHT (HEIGHT OF COVER 0.3048m)

(B) PROPOSED VARIABLE WIDTH UNDERGROUND EASEMENT FOR BELL ATLANTIC (V) PROPOSED VARIABLE WIDTH OVERHEAD EASEMENT FOR VIRGINIA POWER

*NOTE: STEPS NOT TO BE DISTURBED DURING CONSTRUCTION. Note: Figures in brackets and dot-dashed lines denote Permanent Easements. Note: Figures in parenthesis and dot-dot-dashed lines denote Temporary Easements. C Denotes Construction Limits In Cuts F Denotes Construction Limits In Fills

