

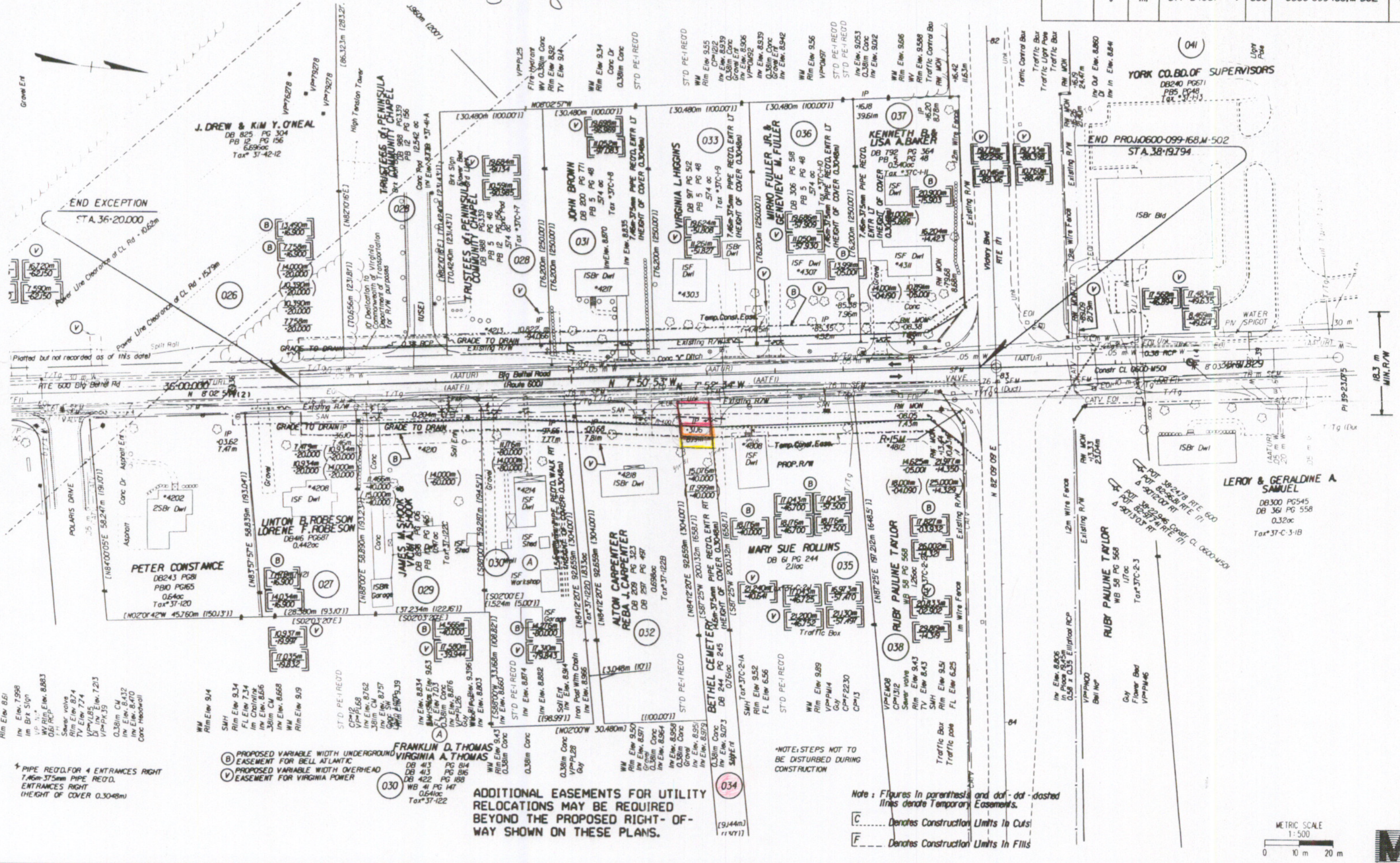
Design File - documents of su.suffolk.district.design.unit\... Ref. File - documents of su.suffolk.district.design.unit\... Levels On - 1:63

37 38

State Highway Plat Book No. 9 Page 3

DESIGN FEATURES RELATING TO CONSTRUCTION OR TO REGULATION AND CONTROL OF TRAFFIC MAY BE SUBJECT TO CHANGE AS DEEMED NECESSARY BY THE DEPARTMENT

REVISED	FHWA REGION	STATE	FEDERAL AID		ROUTE	STATE PROJECT	SHEET NO.
			PROJECT	ROUTE			
11-15-2008	3	VA	STP-54031		600	0600-099-168, M-502	6



- WM Rim Elev 8.51
- Inv Elev. 7.98
- Im Brk Sign
- VP N.W.
- WV Rim Elev. 8.83
- OBI RCP
- Sewer Valve
- Rim Elev. 8.74
- TV Elev. 7.74
- VP N.W.
- VP N.W.
- 0.38m CM
- Inv Elev. 8.432
- Inv Elev. 8.470
- Conc Headwall

\* PIPE RECD. FOR 4 ENTRANCES RIGHT  
 7.46m-37.5mm PIPE RECD.  
 ENTRANCES RIGHT  
 (HEIGHT OF COVER 0.3048m)

- (B) PROPOSED VARIABLE WIDTH UNDERGROUND EASEMENT FOR BELL ATLANTIC
- (V) PROPOSED VARIABLE WIDTH OVERHEAD EASEMENT FOR VIRGINIA POWER

**FRANKLIN D. THOMAS  
 VIRGINIA A. THOMAS**  
 DB 43 PG 84  
 DB 43 PG 86  
 DB 42 PG 188  
 WB 41 PG 147  
 0.64ac  
 Tax\*37-122

**ADDITIONAL EASEMENTS FOR UTILITY RELOCATIONS MAY BE REQUIRED BEYOND THE PROPOSED RIGHT-OF-WAY SHOWN ON THESE PLANS.**

\*NOTE: STEPS NOT TO BE DISTURBED DURING CONSTRUCTION

Note: Figures in parenthesis and dot-dot-dashed lines denote Temporary Easements.  
 C --- Denotes Construction Limits In Cuts  
 F --- Denotes Construction Limits In Fills

