

SUBDIVISION IS DESIGNATED AS A RESOURCE MANAGEMENT AREA AND RESOURCE PROTECTION AREA OF THE CITY'S ENVIRONMENTAL MANAGEMENT AREA OVERLAY DISTRICT.

ANY IMPERVIOUS COVERAGE ENCROACHMENT INTO THE RESOURCE PROTECTION AREA WITHIN THE SUBDIVISION TRACT WILL NECESSITATE THE APPROVAL OF AN EXCEPTION TO THE CITY'S ENVIRONMENTAL MANAGEMENT AREA OVERLAY DISTRICT REGULATIONS BY THE CITY'S BOARD OF ZONING APPEALS.

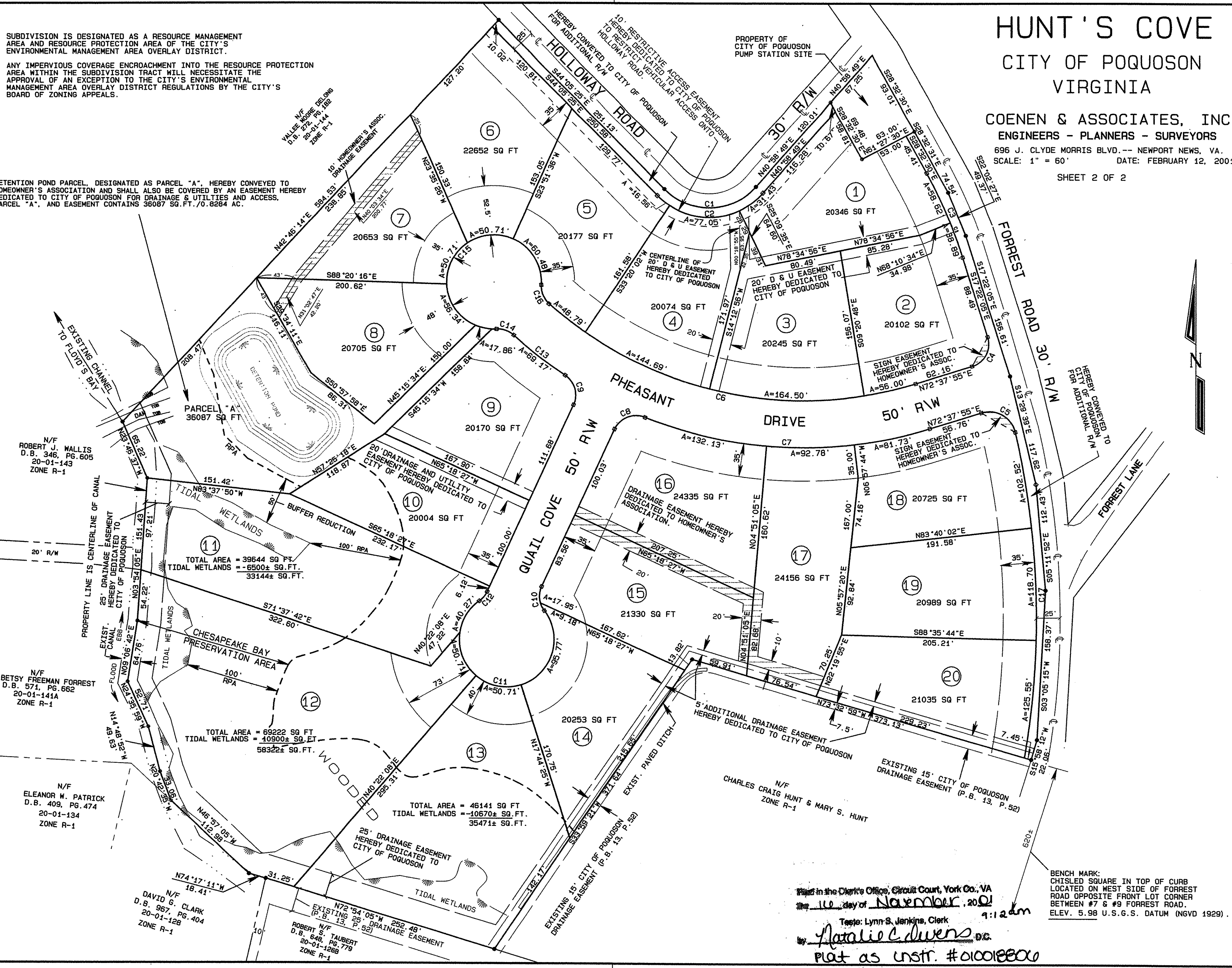
DETENTION POND PARCEL, DESIGNATED AS PARCEL "A", HEREBY CONVEYED TO HOMEOWNER'S ASSOCIATION AND SHALL ALSO BE COVERED BY AN EASEMENT HEREBY DEDICATED TO CITY OF POQUOSON FOR DRAINAGE & UTILITIES AND ACCESS, PARCEL "A", AND EASEMENT CONTAINS 36087 SQ.FT./0.8284 AC.

HUNT'S COVE CITY OF POQUOSON VIRGINIA

COENEN & ASSOCIATES, INC.
ENGINEERS - PLANNERS - SURVEYORS

696 J. CLYDE MORRIS BLVD. -- NEWPORT NEWS, VA.
SCALE: 1" = 60' DATE: FEBRUARY 12, 2001

SHEET 2 OF 2



N/F
ROBERT J. WALLIS
D.B. 346, PG. 605
20-01-143
ZONE R-1

N/F
BETSY FREEMAN FORREST
D.B. 571, PG. 662
20-01-141A
ZONE R-1

N/F
ELEANOR W. PATRICK
D.B. 409, PG. 474
20-01-134
ZONE R-1

N/F
DAVID G. CLARK
D.B. 967, PG. 404
20-01-128
ZONE R-1

N/F
ROBERT S. TAUBERT
D.B. 648, PG. 779
20-01-1268
ZONE R-1

Filed in the Clerk's Office, Circuit Court, York Co., VA
the 16 day of November, 2001
1:12 am
Tape: Lynn S. Jenkins, Clerk
Natalie C. Duers, D.C.
Plat as INSTR. #010018800

BENCH MARK:
CHISLED SQUARE IN TOP OF CURB
LOCATED ON WEST SIDE OF FOREST
ROAD OPPOSITE FRONT LOT CORNER
BETWEEN #7 & #9 FOREST ROAD.
ELEV. 5.98 U.S.G.S. DATUM (NGVD 1929).