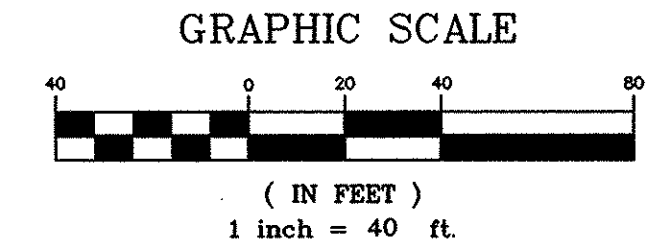


Inst # 010019181

BOUNDARY LINE ADJUSTMENT
 PROPERTY OF
MARY ELIZABETH H. BAILEY
 AND
**WILLIAM A. AMBROSE &
 JOSEPH R. AMBROSE, JR.**
 NELSON MAGISTERIAL DISTRICT
 COUNTY OF YORK, VIRGINIA

DATE: 10/19/00 SHEET 2 OF 2 SCALE: 1"=40'
 PROJECT NO: 30871.00 DRAWN BY: DWP

VHB Vanasse Hangen Brustlin, Inc.
 Transportation Land Development Environmental Services
 11832 Rock Landing Drive, Suite 203
 Newport News, Virginia 23606
 (757) 873-3386 • FAX (757) 873-0757



LEGEND

- IPF PIN FOUND
- IPS PIN SET
- PROPERTY LINE
- PROPERTY LINES VOIDED
- EASEMENT LINES

APPROVED:
 YORK COUNTY BOARD OF SUPERVISORS

BY: Al. Masadlena
 PLAT APPROVING AGENT

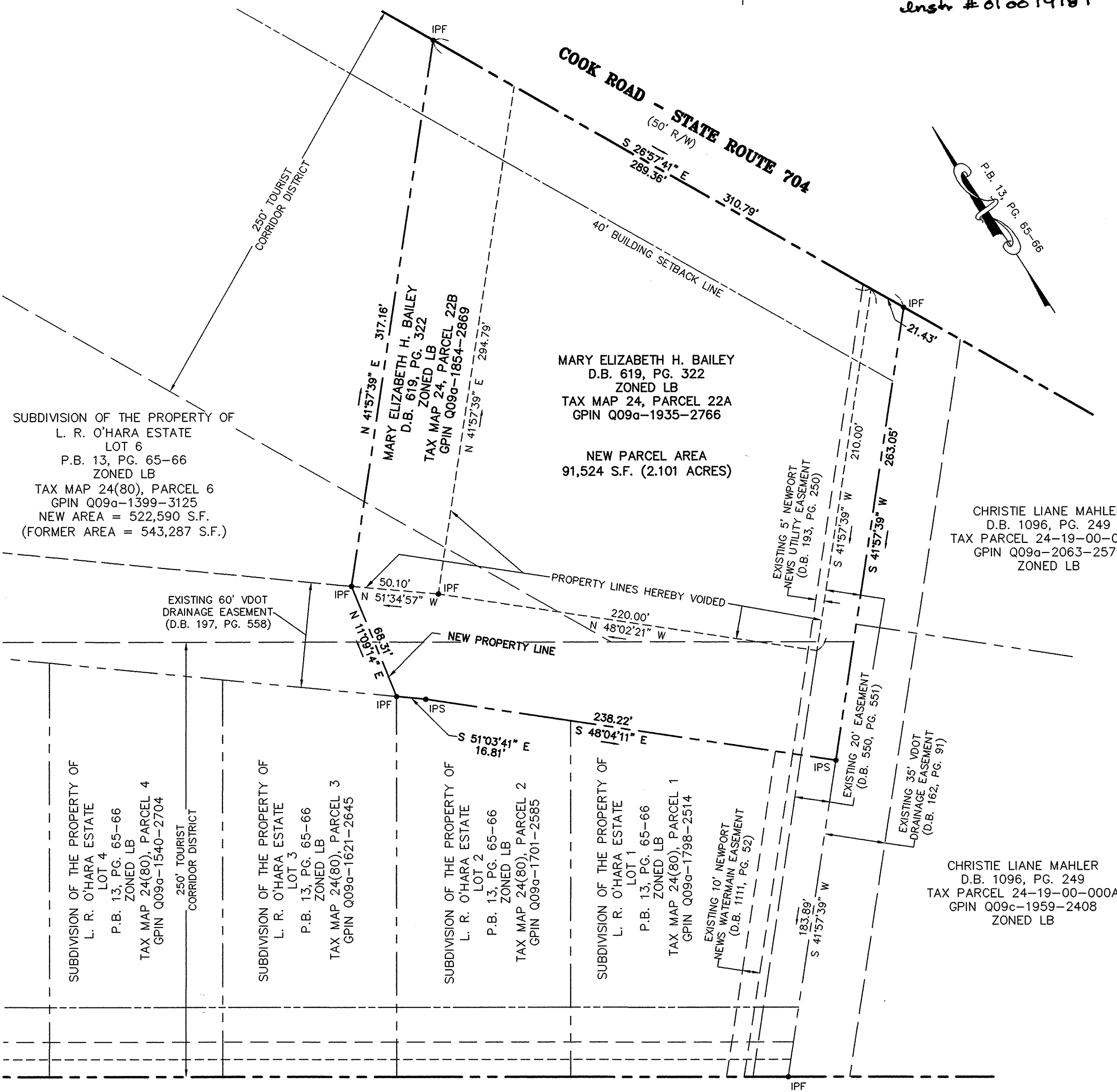
DATE: 11/13/01

STATE OF VIRGINIA
 COUNTY OF YORK

IN THE CLERK'S OFFICE OF THE CIRCUIT COURT FOR
 THE COUNTY OF YORK, THE 21st DAY OF Nov, 2001,
 THIS MAP WAS PRESENTED AND ADMITTED TO RECORD AS
 THE LAW DIRECTS IN PLAT BOOK _____ PAGE _____
 Inst # 010019181

TESTE: Lynn S. Jenkins
 CLERK

BY: Spencer Hughes DC.



GEORGE WASHINGTON MEMORIAL HIGHWAY - U.S. ROUTE 17
 (130' TO 170' WIDTH R/W)