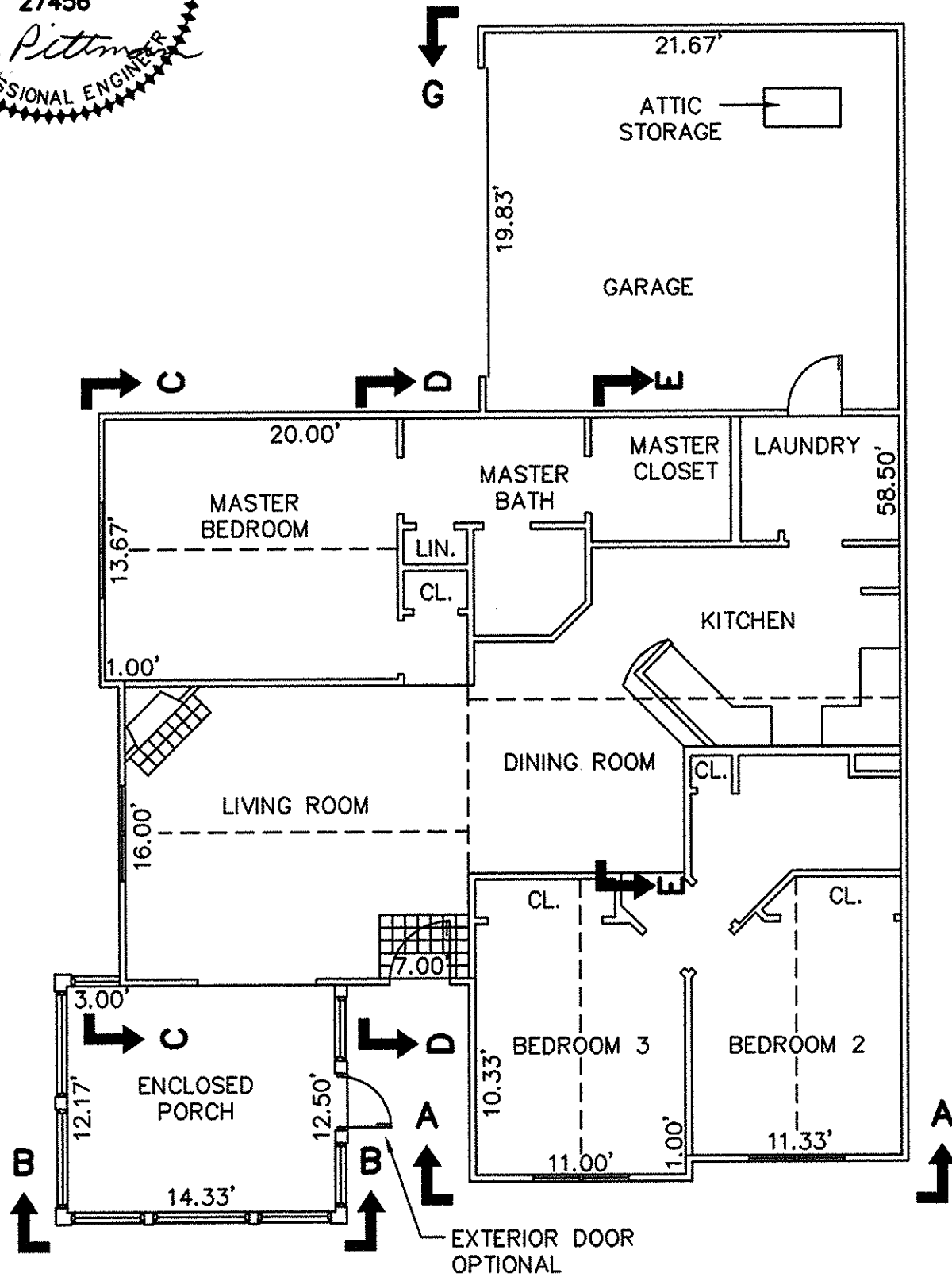
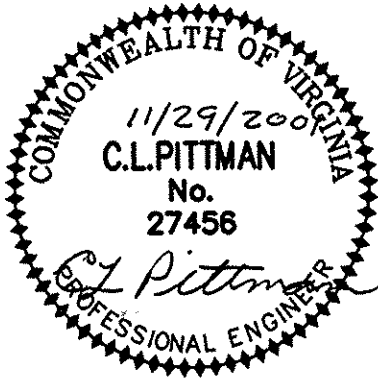
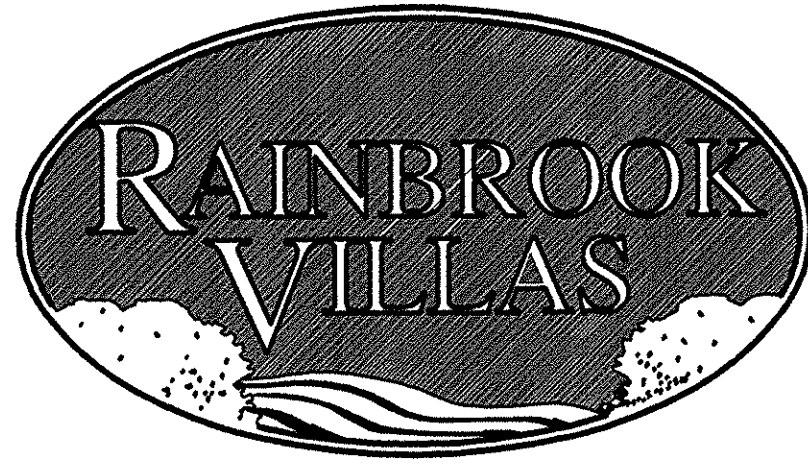


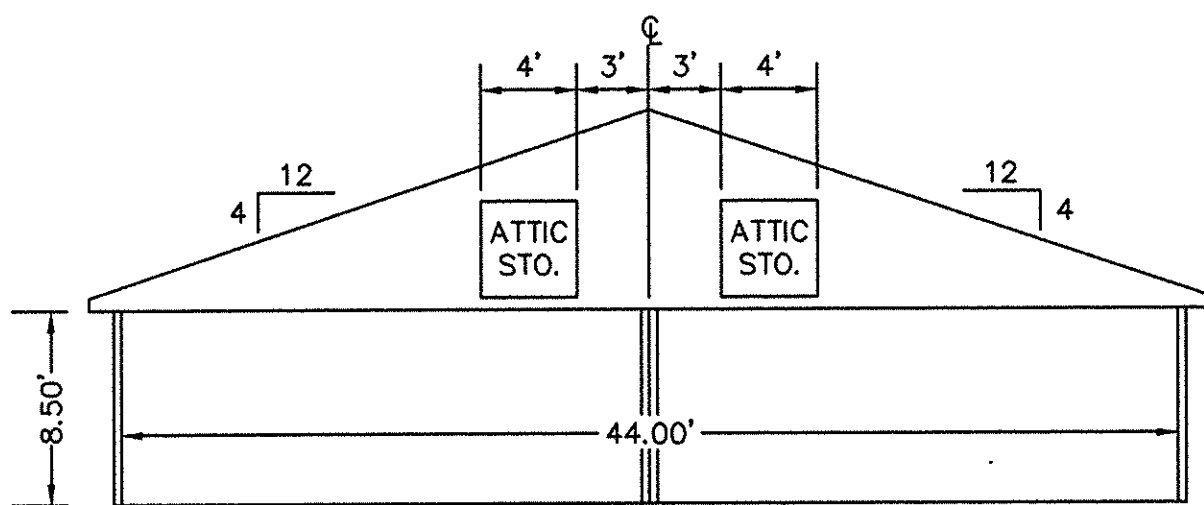
THE UNDERSIGNED CERTIFIES THAT THIS PLAN IS ACCURATE AND COMPLIES WITH THE PROVISIONS OF THE CODE OF VIRGINIA SECTION 55-79.58 (b) AND ALL UNITS DEPICTED HEREON HAVE BEEN SUBSTANTIALLY COMPLETED.

SIGNED: C.L. Pittman DATE: 11/29/2001
C.L. PITTMAN, P.E.

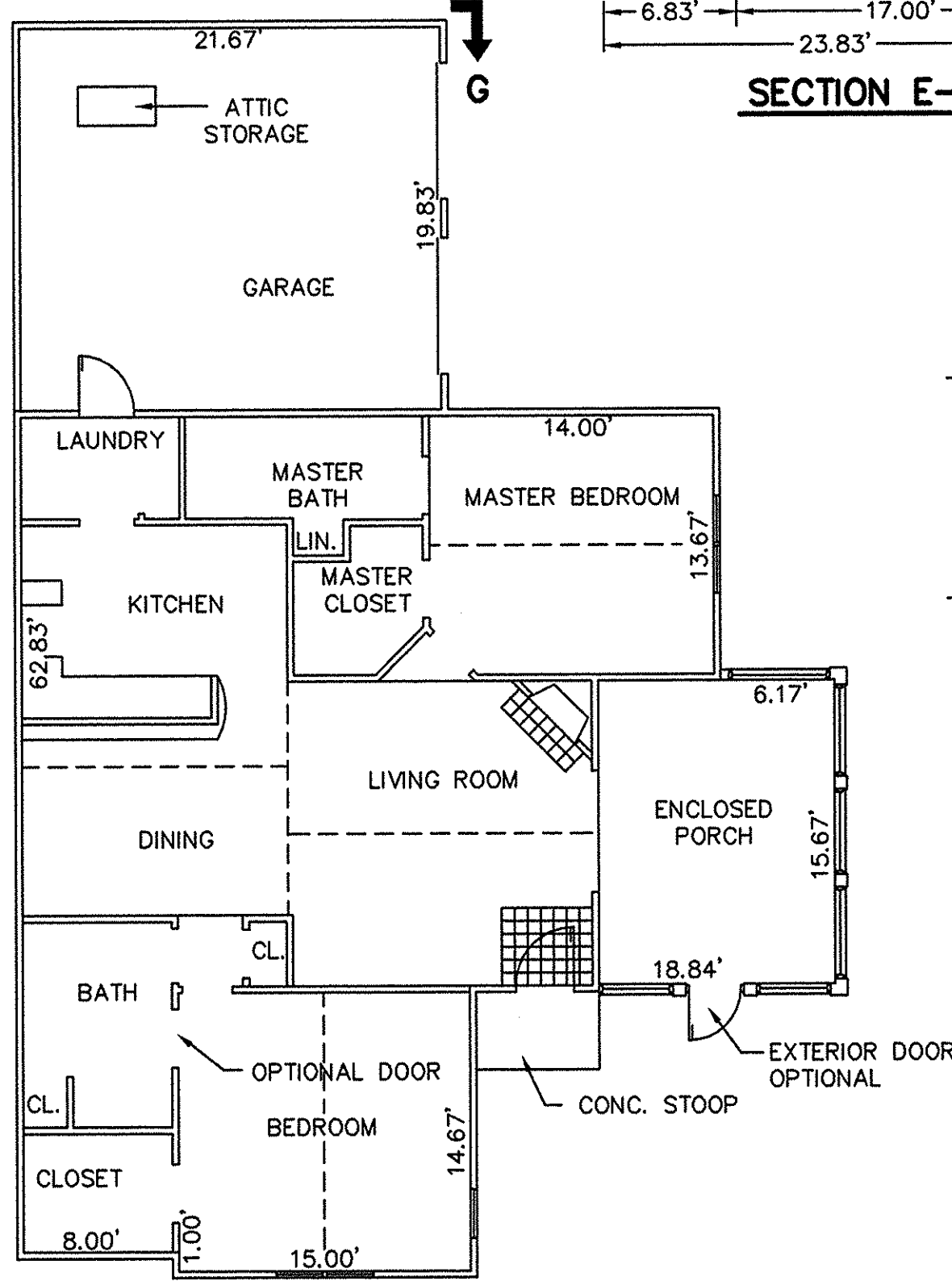


BUILDING 26-1 & 26-3 - CANTERBURY
BUILDING 28-1 & 28-3 - CANTERBURY

FLOOR PLAN
W/ ENCLOSED PORCH

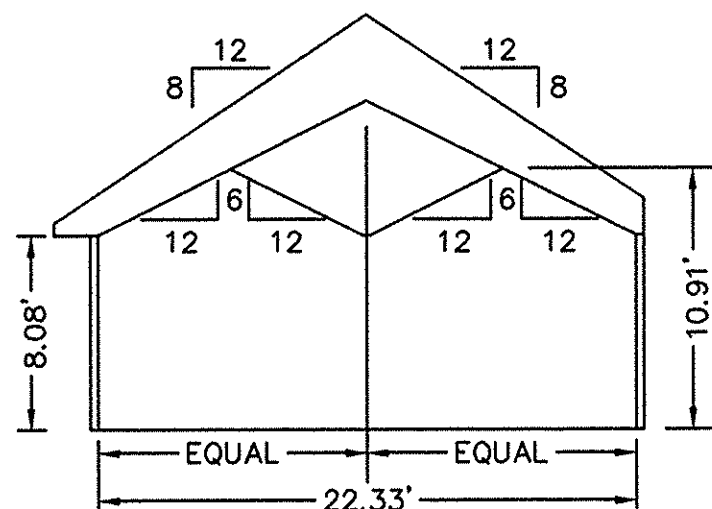


SECTION G-G
GARAGE

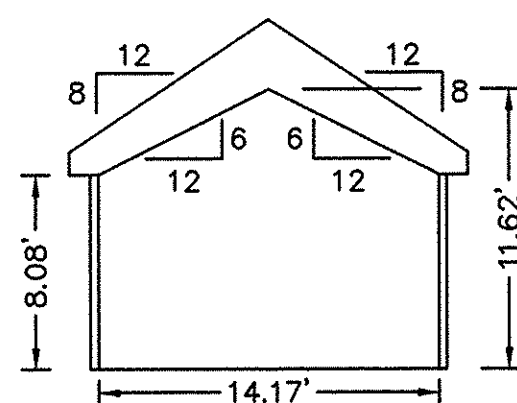


BUILDING 26-2 & 26-4 - ABBEY
BUILDING 28-2 & 28-4 - ABBEY

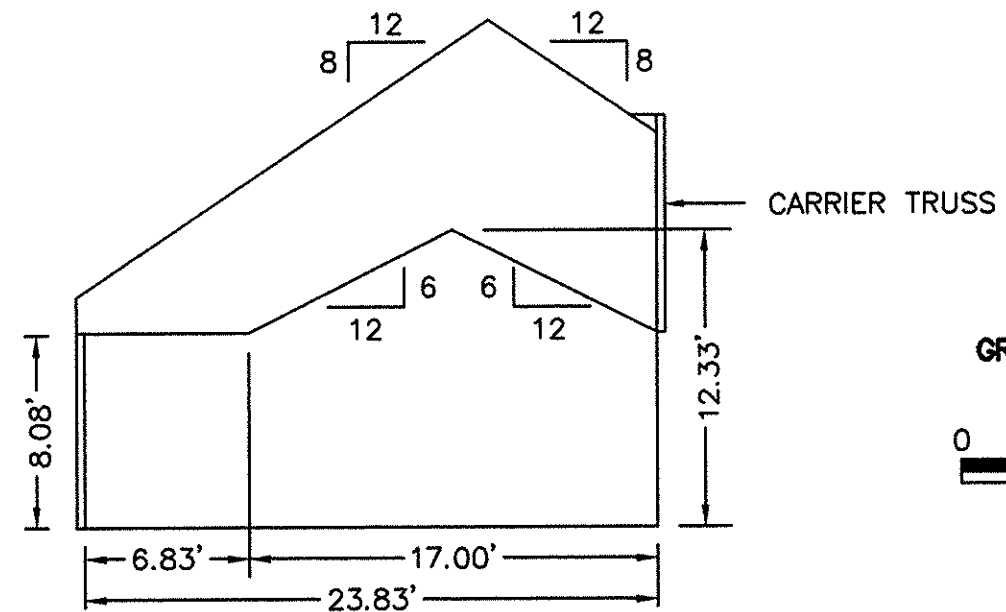
FLOOR PLAN
W/ ENCLOSED PORCH



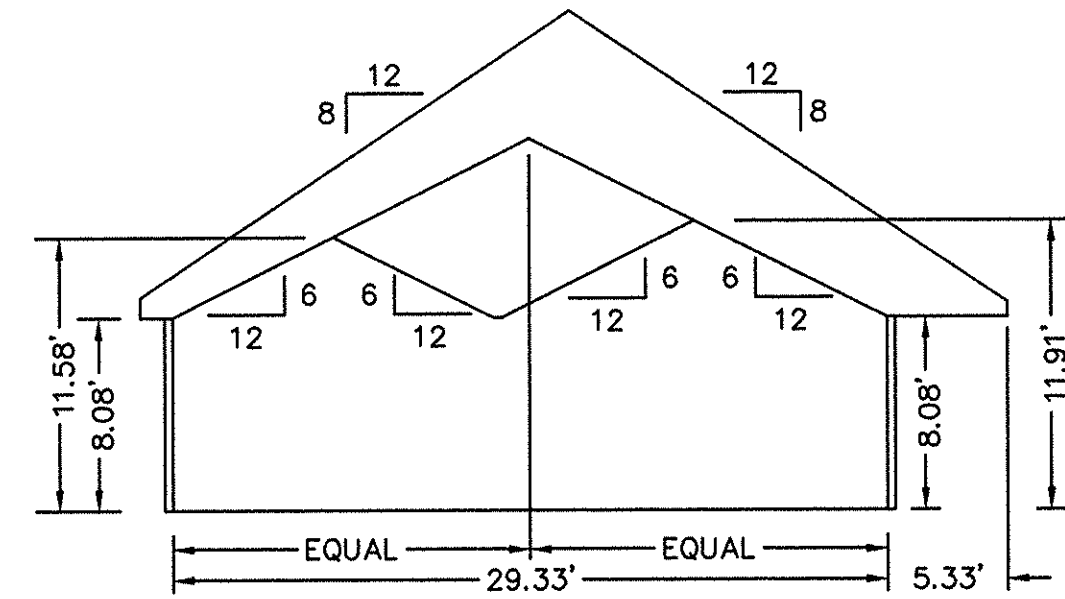
SECTION A-A



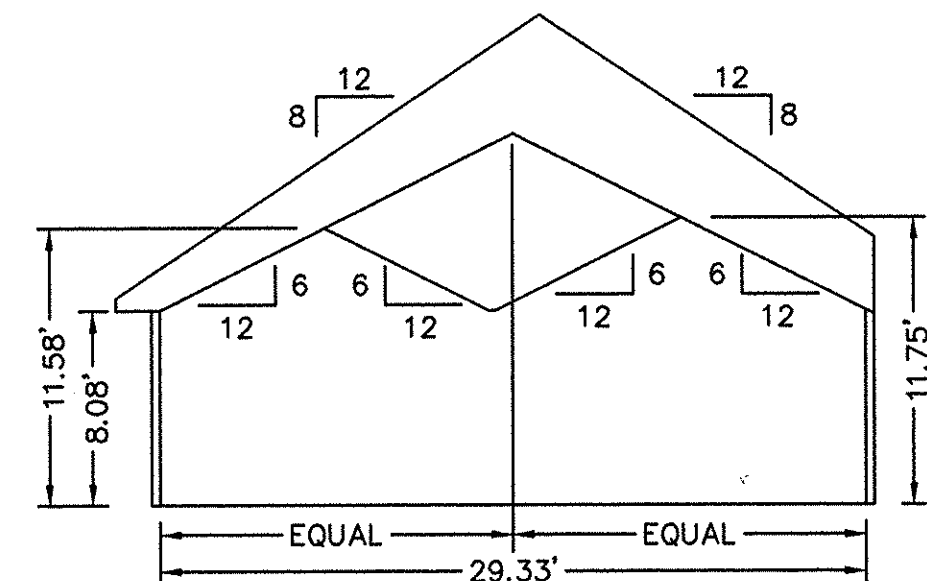
SECTION B-B
ENCLOSED PORCH



SECTION E-E



SECTION D-D

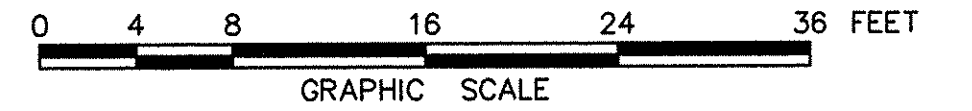


SECTION C-C

EXHIBIT "D"
PLAT OF
RAINBROOK VILLAS
A CONDOMINIUM
PHASE XII

SHEET 2 OF 3

GRAFTON DISTRICT - COUNTY OF YORK, VIRGINIA
SCALE: 1/8" = 1'-0" OCTOBER 18, 2001



THE SIRINE GROUP, LTD.
SURVEYORS • ENGINEERS • PLANNERS
4794 GEORGE WASHINGTON MEMORIAL HIGHWAY
U.S. ROUTE 17
P.O. BOX 450
WHITE MARSH, VIRGINIA 23183

APPROVED:
YORK COUNTY BOARD OF SUPERVISORS

BY: Al Maddalena

DATE: 11/30/01

NOTES:

1. ALL BUILDING DIMENSIONS SHOWN HEREON ARE INTERIOR DIMENSIONS AND ARE IN FEET.

STATE OF VIRGINIA
COUNTY OF YORK

IN THE CLERK'S OFFICE OF THE CIRCUIT COURT FOR THE COUNTY OF YORK THE 30 DAY OF November, 2001, THIS PLAT WAS PRESENTED AND ADMITTED TO RECORD AS THE LAW DIRECTS IN PLAT BOOK _____, PAGE _____, INSTR # 010019858-2 3:35pm

TESTE: Lynn S. Jenkins
CLERK

BY: Sande Hodges DC.