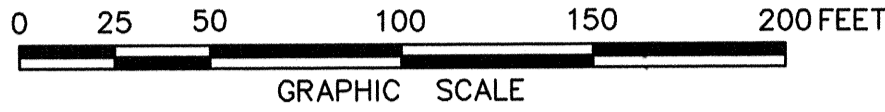


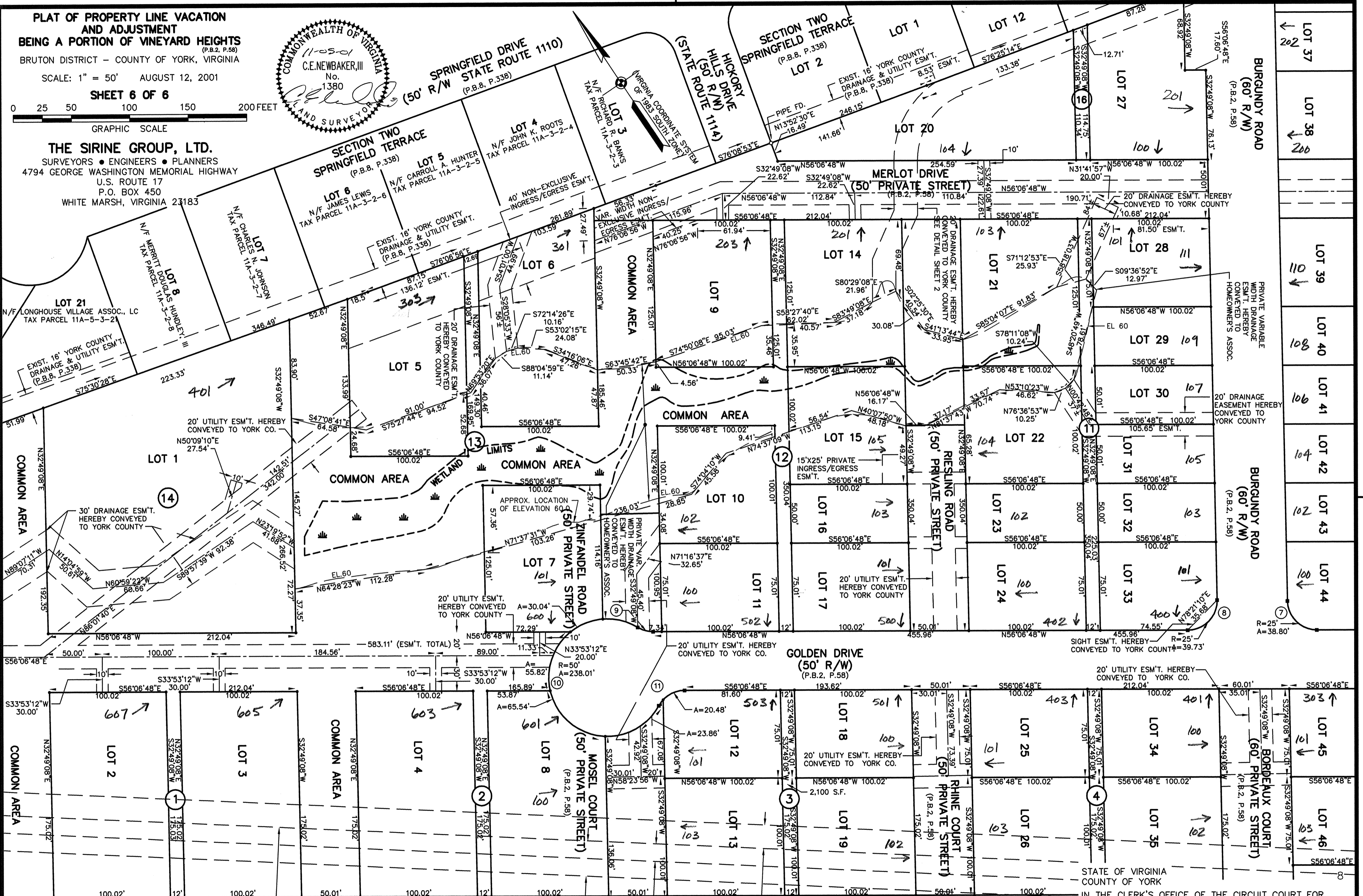
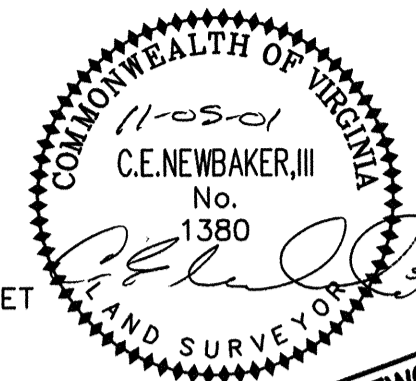
PLAT OF PROPERTY LINE VACATION AND ADJUSTMENT BEING A PORTION OF VINEYARD HEIGHTS (P.B.2, P.58) BRUTON DISTRICT - COUNTY OF YORK, VIRGINIA

SCALE: 1" = 50' AUGUST 12, 2001

SHEET 6 OF 6



THE SIRINE GROUP, LTD. SURVEYORS • ENGINEERS • PLANNERS 4794 GEORGE WASHINGTON MEMORIAL HIGHWAY U.S. ROUTE 17 P.O. BOX 450 WHITE MARSH, VIRGINIA 23183



COMMON AREA N/F VIRGINIA ENTERPRISES, INC. TAX PARCEL 11-2-1-A EXIST. 20' YORK COUNTY UTILITY & DRAINAGE ESM'T. (D.B.615, P.132) LOT 48 N/F ROGER L. HAMMOND TAX PARCEL 11-2-1-48 EXIST. 200' VIRGINIA POWER ESM'T. (D.B.73, P.337; P.B.4, P.240; D.B.81, P.408-415; P.B.5, P.93; P.B.1, P.533; P.B.8, P.325) QUEEN'S CREEK ESTATES SECTION 1 (P.B.12, P.26) LOT 47 N/F WALTER R. HILLIAN TAX PARCEL 11-2-1-47 EXIST. 30' NEWPORT NEWS WATERWORKS ESM'T. (D.B.334, P.757; D.B.148, P.487-494) LOT 46 N/F JOHN P. LITTLE TAX PARCEL 11-2-1-46 EXIST. 15' VA. NATURAL GAS, INC. ESM'T. (D.B.607, P.365-378) LOT 45 N/F WILLIAM A. STONER TAX PARCEL 11-2-1-45 EXIST. 20' YORK COUNTY DRAINAGE & UTILITY ESM'T. (D.B.399, P.373-400; D.B.399, P.616-621)

APPROVED: YORK COUNTY BOARD OF SUPERVISORS BY: Al Maddalena PLAT APPROVING AGENT DATE: 12/18/01

STATE OF VIRGINIA COUNTY OF YORK IN THE CLERK'S OFFICE OF THE CIRCUIT COURT FOR THE COUNTY OF YORK THE 19 DAY OF Dec 2001, THIS PLAT WAS PRESENTED AND ADMITTED TO RECORD AS THE LAW DIRECTS IN PLAT BOOK PAGE 1108 INSTR. # 010081793 11:4am TESTE: Lynn S. Jenkins CLERK BY: Natalie C. Owens, D.C.