

11/17/01 4:14:42 PM \\SU-SERVER-04\PLOT\OCF\albr.acf Barnes-JC \\\su-server-04\plot\brf\003-3.prf

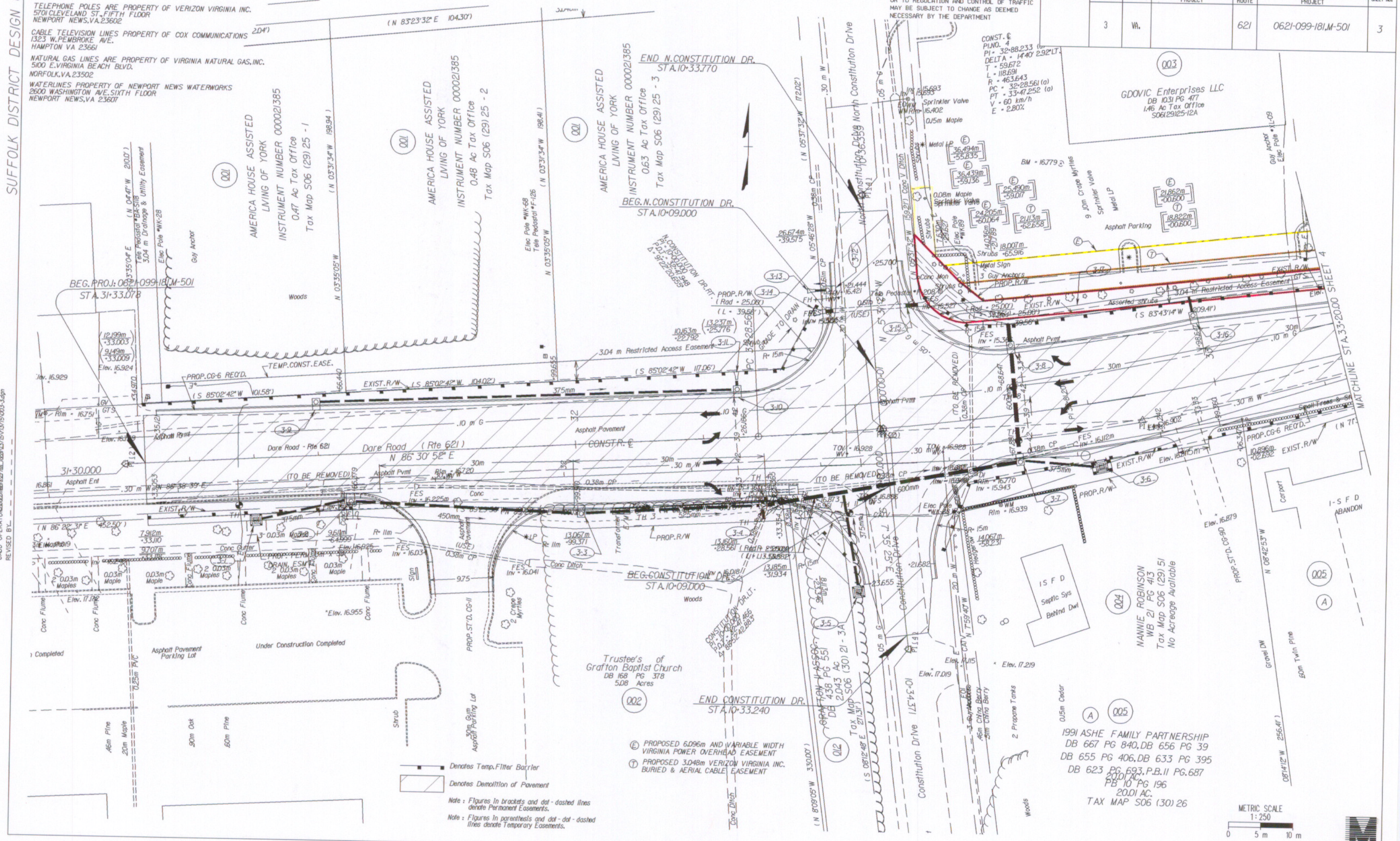
Design File - c:\documents of ms\_bacon\3719\033\Suppl\719 - c:\documents of ms\_bacon\3719\033\Suppl\719.dwg Levels On - 1462263 Ref. File - c:\documents of ms\_bacon\3719\033\Suppl\719 - c:\documents of ms\_bacon\3719\033\Suppl\719.dwg Levels On - 14620580-63 Ref. File - c:\documents of ms\_bacon\3719\033\Suppl\719 - c:\documents of ms\_bacon\3719\033\Suppl\719.dwg Levels On - 159815 Ref. File - c:\documents of ms\_bacon\3719\033\Suppl\719 - c:\documents of ms\_bacon\3719\033\Suppl\719.dwg Levels On - 12224580-63 Ref. File - c:\documents of ms\_bacon\3719\033\Suppl\719 - c:\documents of ms\_bacon\3719\033\Suppl\719.dwg Levels On - 15052-63 Ref. File - c:\documents of ms\_bacon\3719\033\Suppl\719 - c:\documents of ms\_bacon\3719\033\Suppl\719.dwg Levels On - 143 Ref. File - c:\documents of ms\_bacon\3719\033\Suppl\719 - c:\documents of ms\_bacon\3719\033\Suppl\719.dwg Levels On - 143 Ref. File - c:\documents of ms\_bacon\3719\033\Suppl\719 - c:\documents of ms\_bacon\3719\033\Suppl\719.dwg Levels On - 143 Ref. File - c:\documents of ms\_bacon\3719\033\Suppl\719 - c:\documents of ms\_bacon\3719\033\Suppl\719.dwg Levels On - 132543739-643-635557-63

SUFFOLK DISTRICT DESIGN UNIT

POWER POLES ARE PROPERTY OF DOMINION VIRGINIA POWER  
1600 HAMILTON AVE  
PORTSMOUTH, VA 23707  
TELEPHONE POLES ARE PROPERTY OF VERIZON VIRGINIA INC.  
5701 CLEVELAND ST., FIFTH FLOOR  
NEWPORT NEWS, VA 23602  
CABLE TELEVISION LINES PROPERTY OF COX COMMUNICATIONS  
1323 W. PEMBROKE AVE.  
HAMPTON VA 23661  
NATURAL GAS LINES ARE PROPERTY OF VIRGINIA NATURAL GAS, INC.  
5100 E. VIRGINIA BEACH BLVD.  
NORFOLK, VA 23502  
WATER LINES PROPERTY OF NEWPORT NEWS WATERWORKS  
2600 WASHINGTON AVE., SIXTH FLOOR  
NEWPORT NEWS, VA 23607

REVISED	FHWA REGION	STATE	FEDERAL AID PROJECT	ROUTE	STATE PROJECT	SHEET NO.
	3	VA		621	0621-099-181M-501	3

DESIGN FEATURES RELATING TO CONSTRUCTION OR TO REGULATION AND CONTROL OF TRAFFIC MAY BE SUBJECT TO CHANGE AS DEEMED NECESSARY BY THE DEPARTMENT



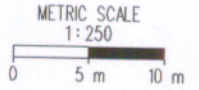
SURVEYED BY: W.T. SALVAGE, JR. 12/1/92-2862  
SUPERVISED BY: H.K. BARTO, S. 11/00, 12/92-3595  
DESIGNED BY: C. GIBB, L. J. 7/92-2556  
CAD OPERATOR: [unreadable] 11/17/01 03:34:40  
REVISED BY:

Denotes Temp. Filter Barrier  
Denotes Demolition of Pavement

Note: Figures in brackets and dot-dashed lines denote Permanent Easements.  
Note: Figures in parenthesis and dot-dashed lines denote Temporary Easements.

- (E) PROPOSED 6.096m AND VARIABLE WIDTH VIRGINIA POWER OVERHEAD EASEMENT
- (T) PROPOSED 3.048m VERIZON VIRGINIA INC. BURIED & AERIAL CABLE EASEMENT

1991 ASHE FAMILY PARTNERSHIP  
DB 667 PG 840, DB 656 PG 39  
DB 655 PG 406, DB 633 PG 395  
DB 623 PG 693, P.B. II PG. 687  
20.01 AC  
TAX MAP S06 (30) 26



PLAN NO.	PROJECT	FILE NO.	SHEET NO.
A	0621-099-181		3