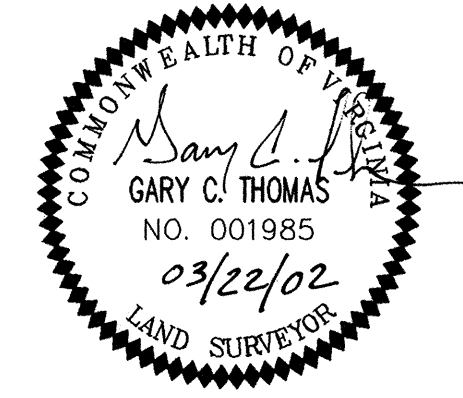
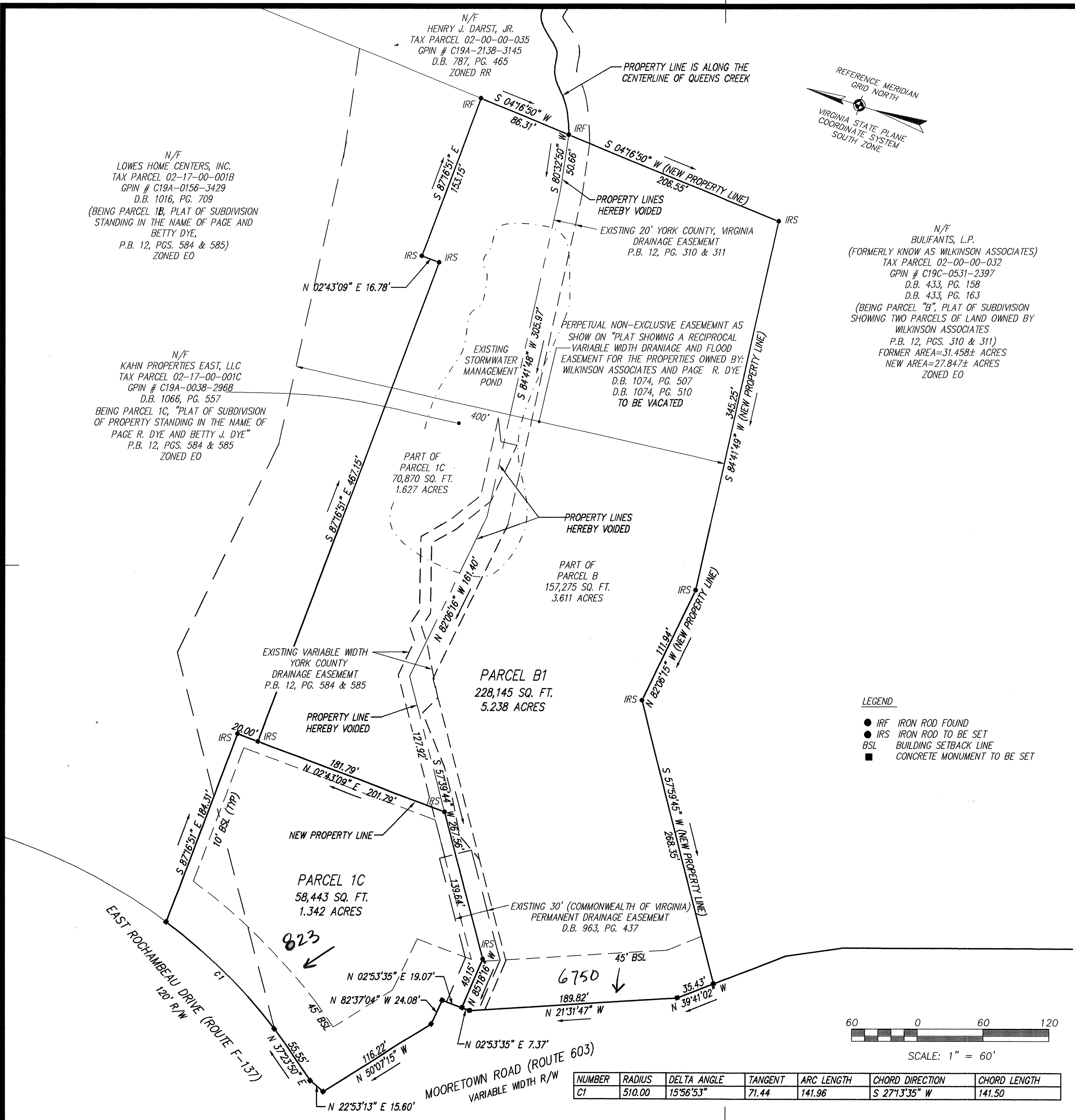


PLAT OF
RESUBDIVISION
AND
BOUNDARY LINE ADJUSTMENT
OF THE PROPERTIES OF
KAHN PROPERTIES EAST, LLC
AND
BULIFANTS, L.P. (FORMERLY KNOWN AS WILKINSON ASSOCIATES)
BRUTON MAGISTERIAL DISTRICT, YORK COUNTY, VIRGINIA

DATE: 03/02/02 SHEET 2 OF 2 SCALE: 1" = 60'

PROJECT NO: 99-710 DRAWN BY: RED

THOMAS LAND SURVEYING, P.C.
SURVEYORS-GPS-PLANNERS
11830-A CANON BOULEVARD
NEWPORT NEWS, VIRGINIA 23606
TEL. (757) 873-2770 FAX (757) 873-2772



APPROVED:
YORK COUNTY BOARD OF SUPERVISORS

BY: Al Maddalena
PLAT APPROVING AGENT

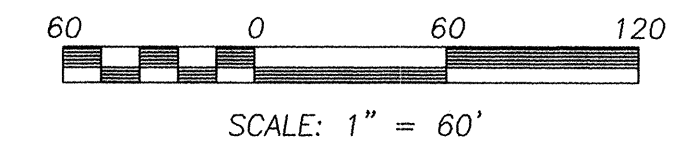
DATE: 3/26/02

STATE OF VIRGINIA
COUNTY OF YORK

IN THE CLERK'S OFFICE OF THE CIRCUIT COURT FOR
THE COUNTY OF YORK, THE 9th DAY OF April, 2002
THIS MAP WAS PRESENTED AND ADMITTED TO RECORD AS
THE LAW DIRECTS AS INSTRUMENT NO. 080006104 12:15pm

TESTE: Lynn S. Jenkins
CLERK

BY: Quade Hughes A.C.



NUMBER	RADIUS	DELTA ANGLE	TANGENT	ARC LENGTH	CHORD DIRECTION	CHORD LENGTH
C1	510.00	15°56'53"	71.44	141.96	S 27°13'35" W	141.50