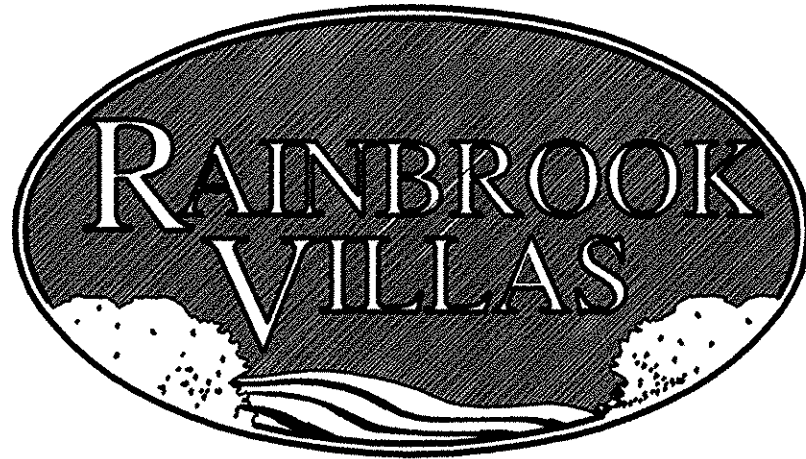
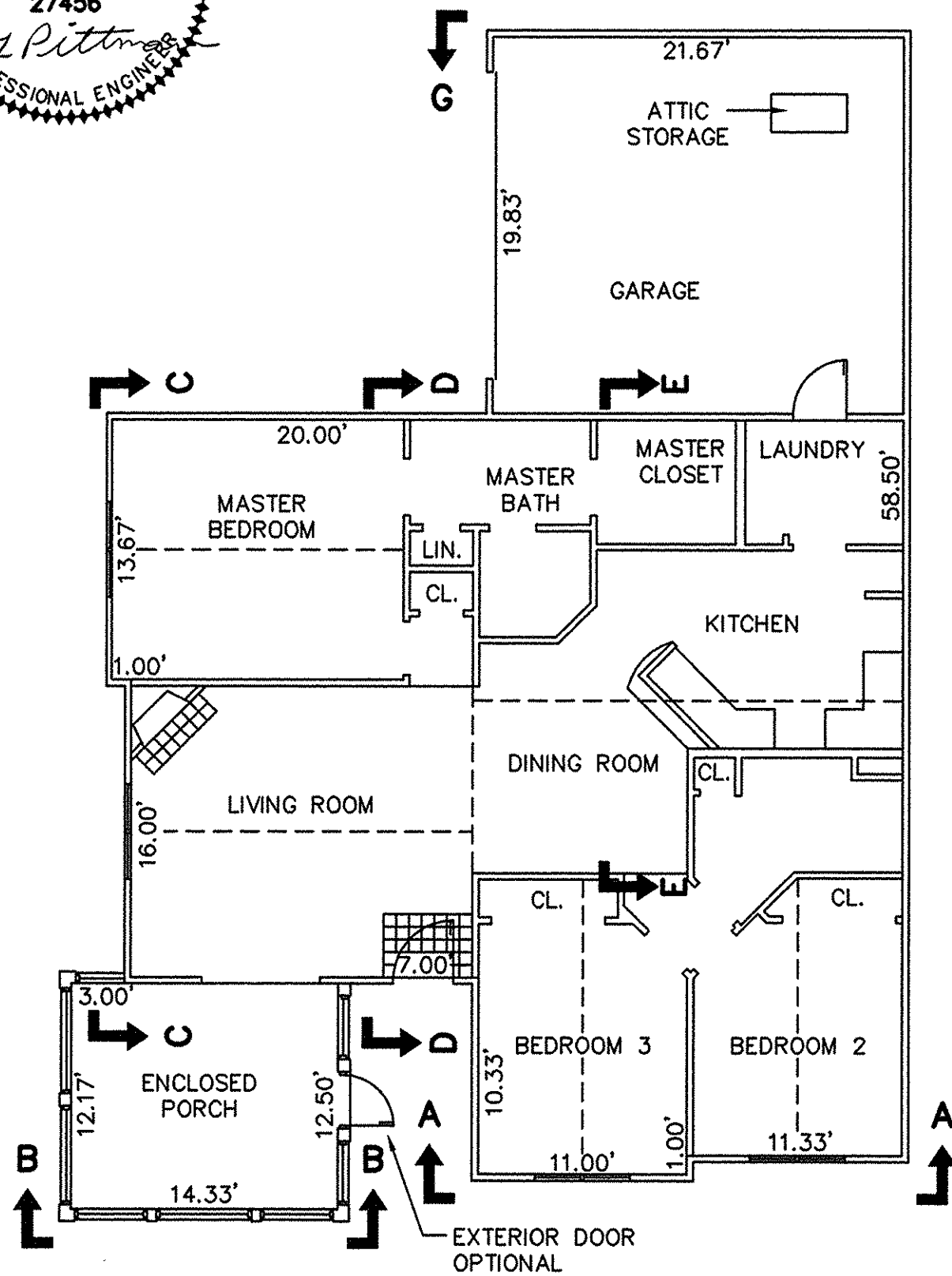


THE UNDERSIGNED CERTIFIES THAT THIS PLAN IS ACCURATE AND COMPLIES WITH THE PROVISIONS OF THE CODE OF VIRGINIA SECTION 55-79.58 (b) AND ALL UNITS DEPICTED HEREON HAVE BEEN SUBSTANTIALLY COMPLETED.

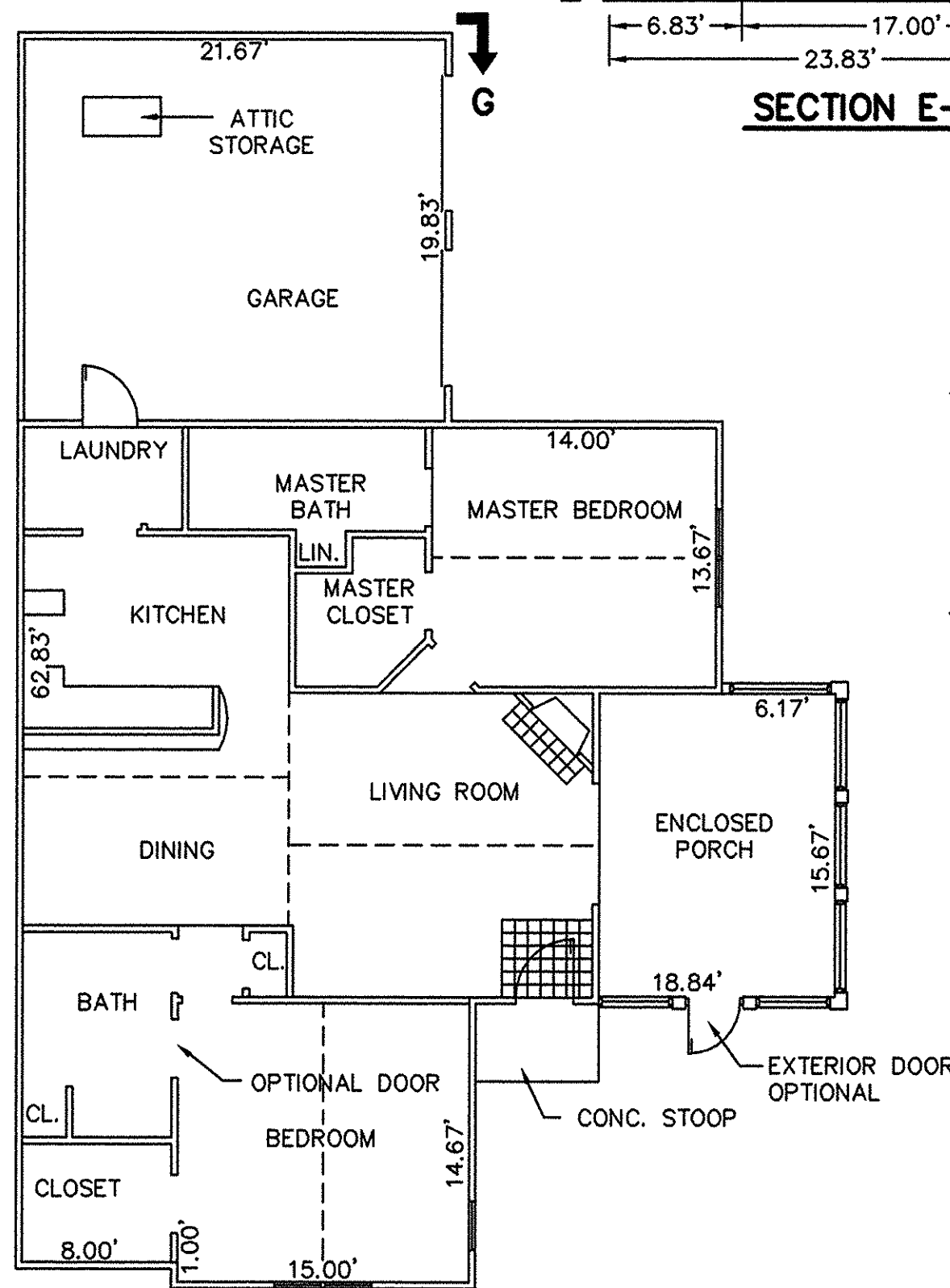
SIGNED: C.L. Pittman DATE: 5/21/2002  
C.L. PITTMAN, P.E.



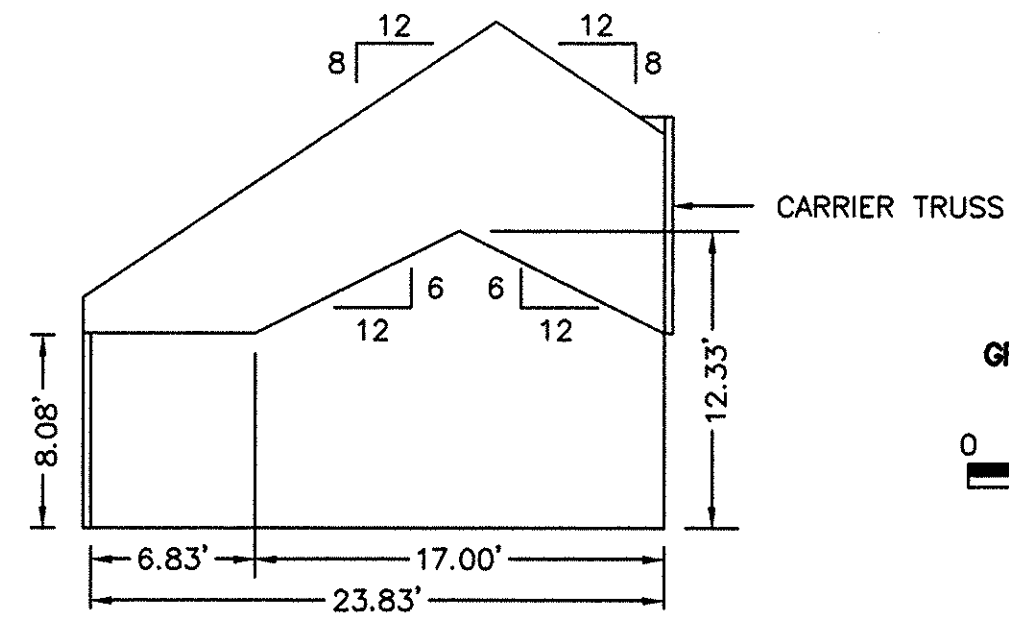
HANDICAPPED ADAPTABLE UNIT



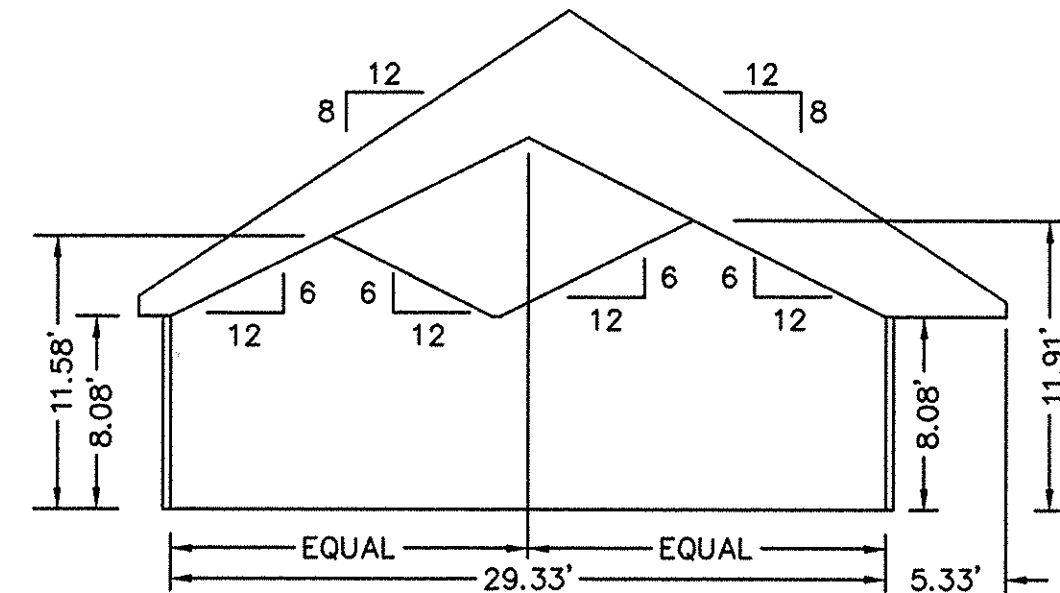
**BUILDING 6-1 & 6-3 - CANTERBURY**  
FLOOR PLAN  
W/ ENCLOSED PORCH



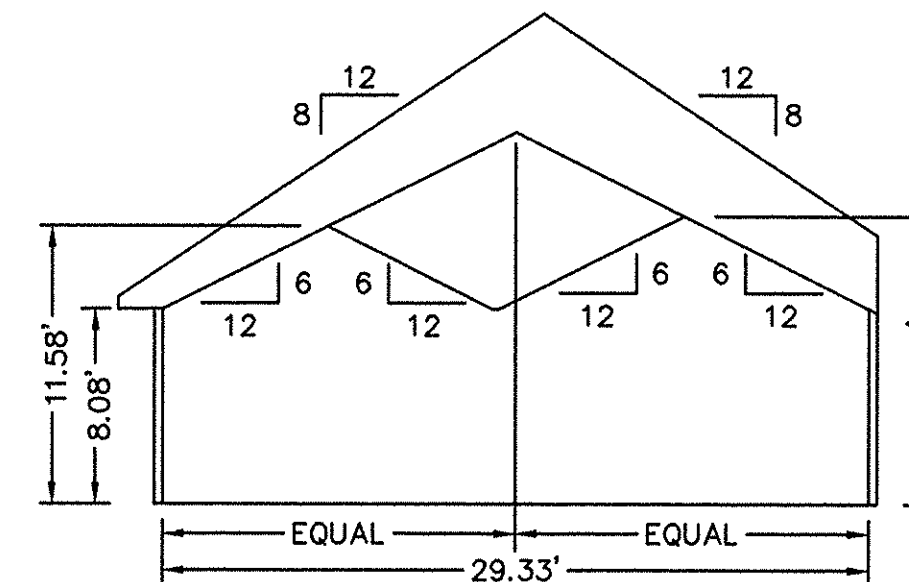
**BUILDING 6-2 & 6-4 - ABBEY**  
FLOOR PLAN  
W/ ENCLOSED PORCH



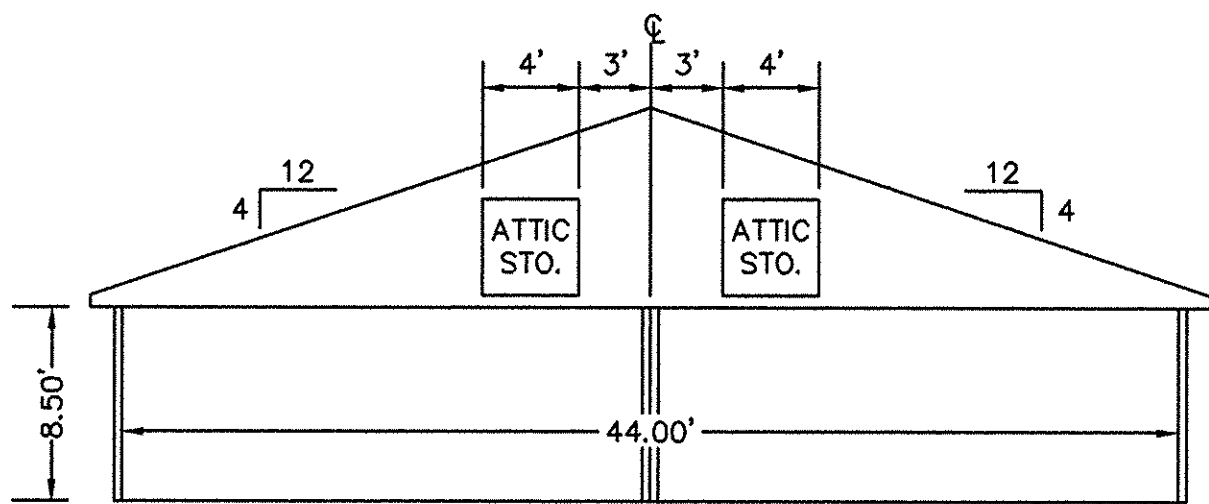
**SECTION E-E**



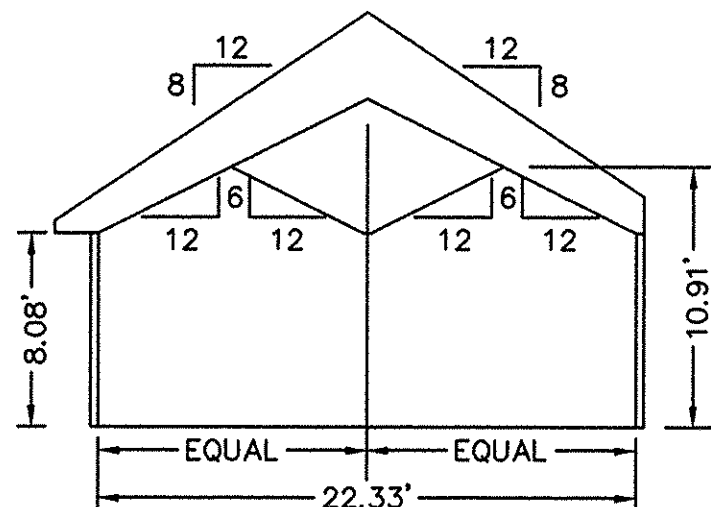
**SECTION D-D**



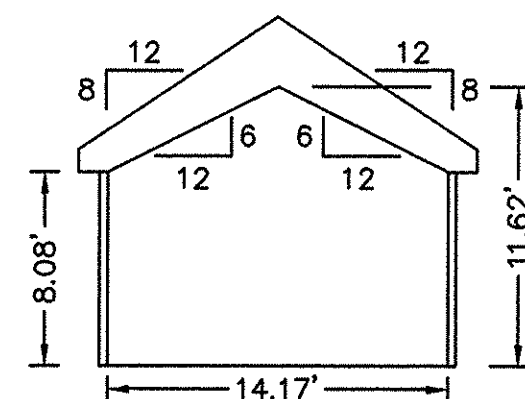
**SECTION C-C**



**SECTION G-G**  
GARAGE



**SECTION A-A**



**SECTION B-B**  
ENCLOSED PORCH

**EXHIBIT "D"**  
PLAT OF  
**RAINBROOK VILLAS**  
A CONDOMINIUM  
PHASE XV  
SHEET 3 OF 4

GRAFTON DISTRICT - COUNTY OF YORK, VIRGINIA  
SCALE: 1/8" = 1'-0" APRIL 17, 2002



**THE SIRINE GROUP, LTD.**  
SURVEYORS • ENGINEERS • PLANNERS  
4794 GEORGE WASHINGTON MEMORIAL HIGHWAY  
U.S. ROUTE 17  
P.O. BOX 450  
WHITE MARSH, VIRGINIA 23183

APPROVED:  
YORK COUNTY BOARD OF SUPERVISORS

BY: Al. Maddalena

DATE: 5/23/02

NOTES:  
1. ALL BUILDING DIMENSIONS SHOWN HEREON ARE INTERIOR DIMENSIONS AND ARE IN FEET.

STATE OF VIRGINIA  
COUNTY OF YORK

IN THE CLERK'S OFFICE OF THE CIRCUIT COURT FOR THE COUNTY OF YORK THE 23<sup>RD</sup> DAY OF May, 2002, THIS PLAT WAS PRESENTED AND ADMITTED TO RECORD AS THE LAW DIRECTS AS INSTRUMENT NUMBER 020009167

TESTE: Lynn S. Jenkins  
CLERK

BY: Susan O. Randall D.C.