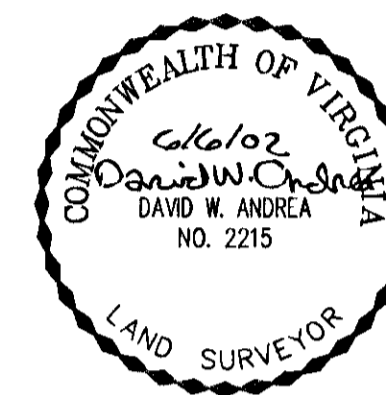


PLAT OF SUBDIVISION
THE GREENLANDS
 PHASE THREE
 BETHEL MAGISTERIAL DISTRICT
 COUNTY OF YORK, VIRGINIA

DATE: 4/16/02 SHEET 3 OF 6 SCALE: 1"=60'

PROJECT NO: 30858.00 DRAWN BY: DWP

VHIB Vanasse Hangen Brustlin, Inc.
 Transportation Land Development Environmental Services
 11832 Rock Landing Drive, Suite 203
 Newport News, Virginia 23606-4231
 (757) 873-3386 • FAX (757) 873-0757

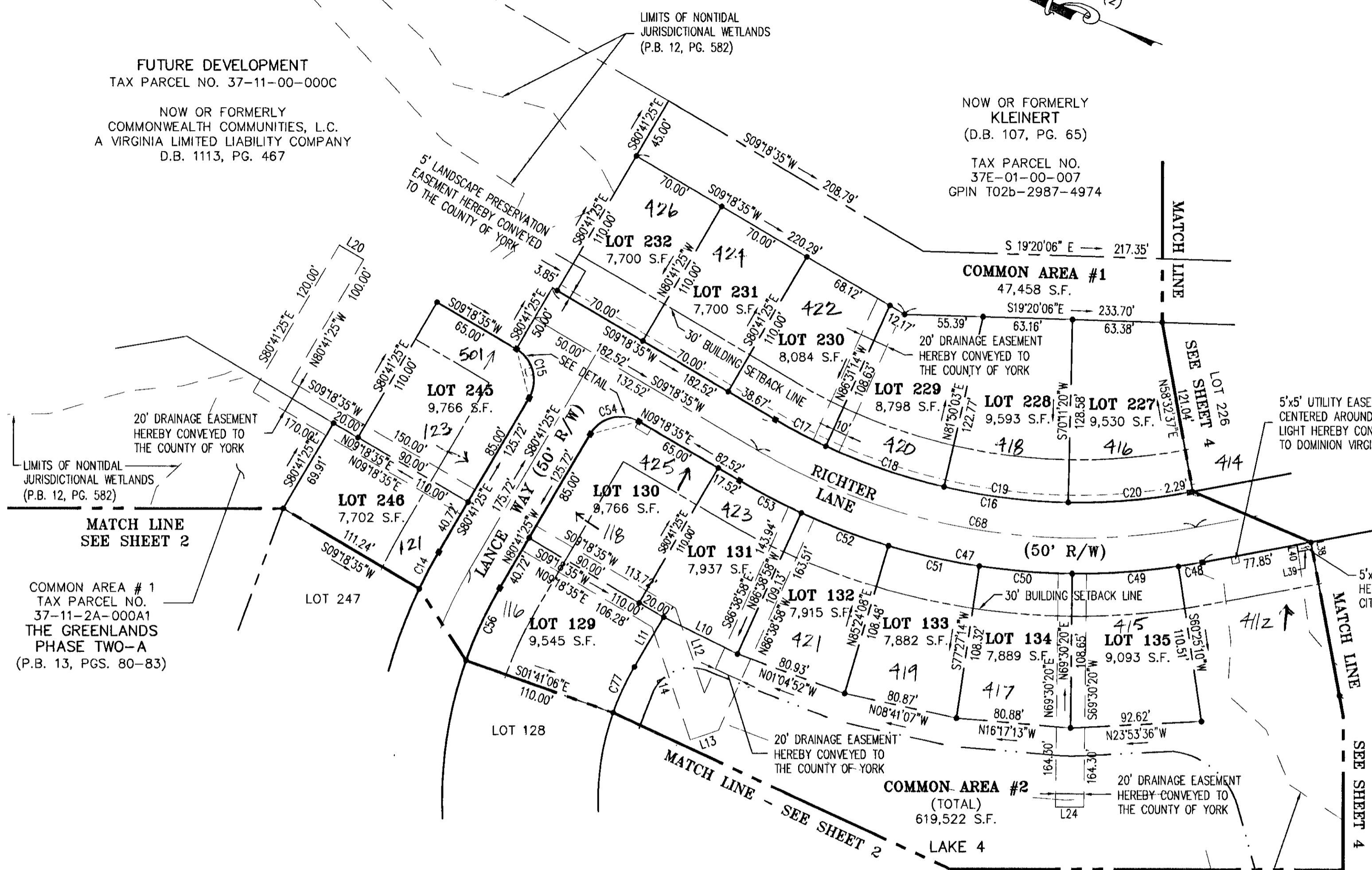


FUTURE DEVELOPMENT
 TAX PARCEL NO. 37-11-00-000C

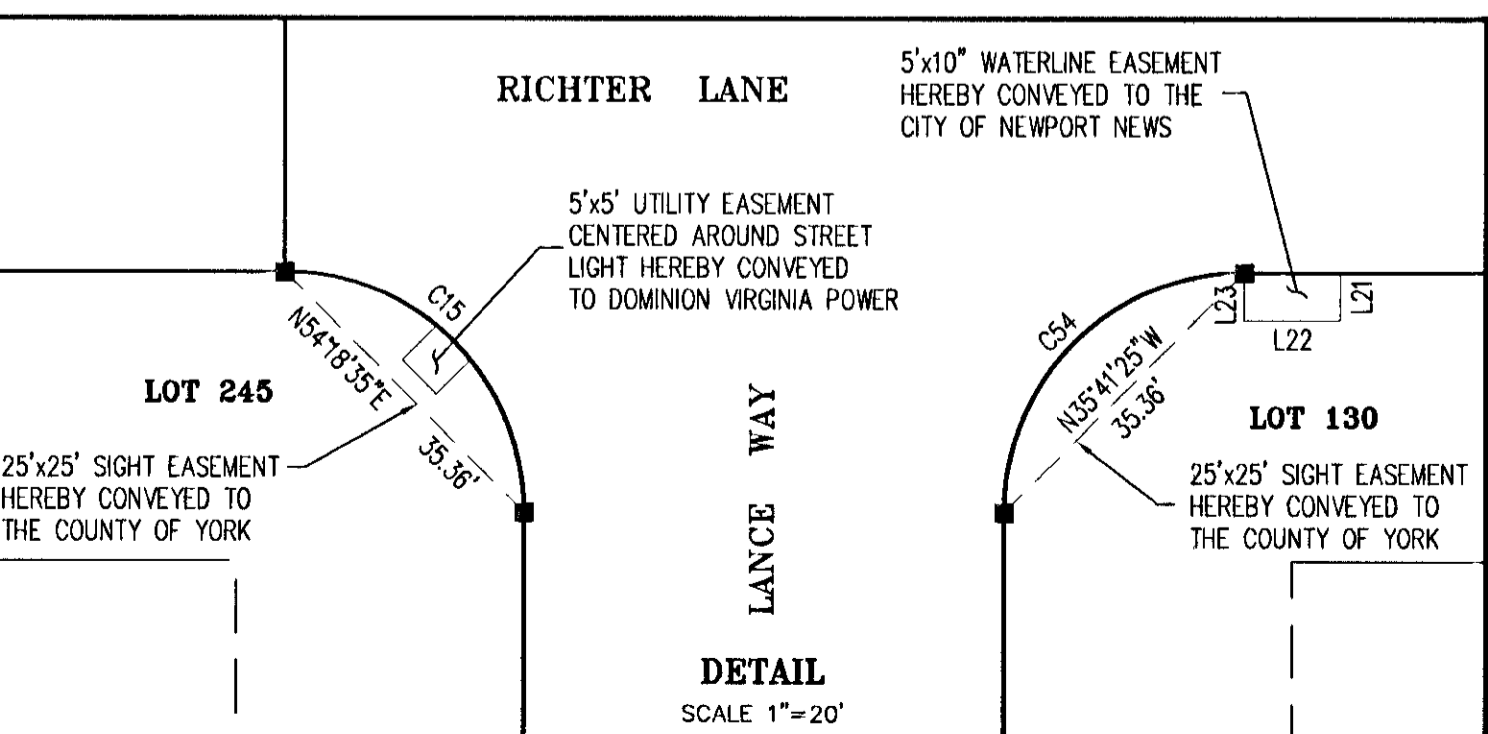
NOW OR FORMERLY
 COMMONWEALTH COMMUNITIES, L.C.
 A VIRGINIA LIMITED LIABILITY COMPANY
 D.B. 1113, PG. 467

NOW OR FORMERLY
 KLEINERT
 (D.B. 107, PG. 65)

TAX PARCEL NO.
 37E-01-00-007
 GPIN T02b-2987-4974

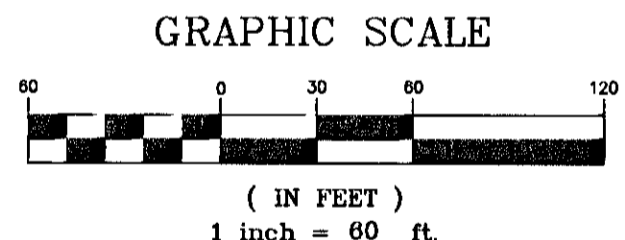


COMMON AREA # 1
 TAX PARCEL NO.
 37-11-2A-000A1
 THE GREENLANDS
 PHASE TWO-A
 (P.B. 13, PGS. 80-83)



- LEGEND**
- INDICATES POINT FOUND AS DENOTED
 - INDICATES IRON ROD TO BE SET
 - INDICATES V.D.H. CONC. MON. FOUND
 - INDICATES CONC. MON. TO BE SET
 - INDICATES APPROXIMATE TOP OF BANK
 - - - INDICATES APPROXIMATE EDGE OF WATER

NOTE:
 SEE SHEET SIX FOR LINE AND CURVE DATA TABLES.



APPROVED:
 YORK COUNTY BOARD OF SUPERVISORS

BY: Al Maddalena
 PLAT APPROVING AGENT

DATE: 7/2/02

STATE OF VIRGINIA
COUNTY OF YORK

IN THE CLERK'S OFFICE OF THE CIRCUIT COURT FOR THE COUNTY OF YORK, THE 3 DAY OF JULY, 2002. THIS MAP WAS PRESENTED AND ADMITTED TO RECORD AS THE LAW DIRECTS AS INSTRUMENT NO. 020013105.

TESTE: Lynn S. Jenkins
 CLERK

BY: Natalie C. Owens, D.C.