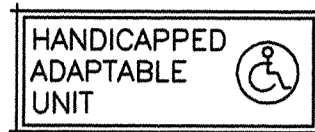


THE UNDERSIGNED CERTIFIES THAT THIS PLAN IS ACCURATE AND COMPLIES WITH THE PROVISIONS OF THE CODE OF VIRGINIA SECTION 55-79.58 (b) AND ALL UNITS DEPICTED HEREON HAVE BEEN SUBSTANTIALLY COMPLETED.

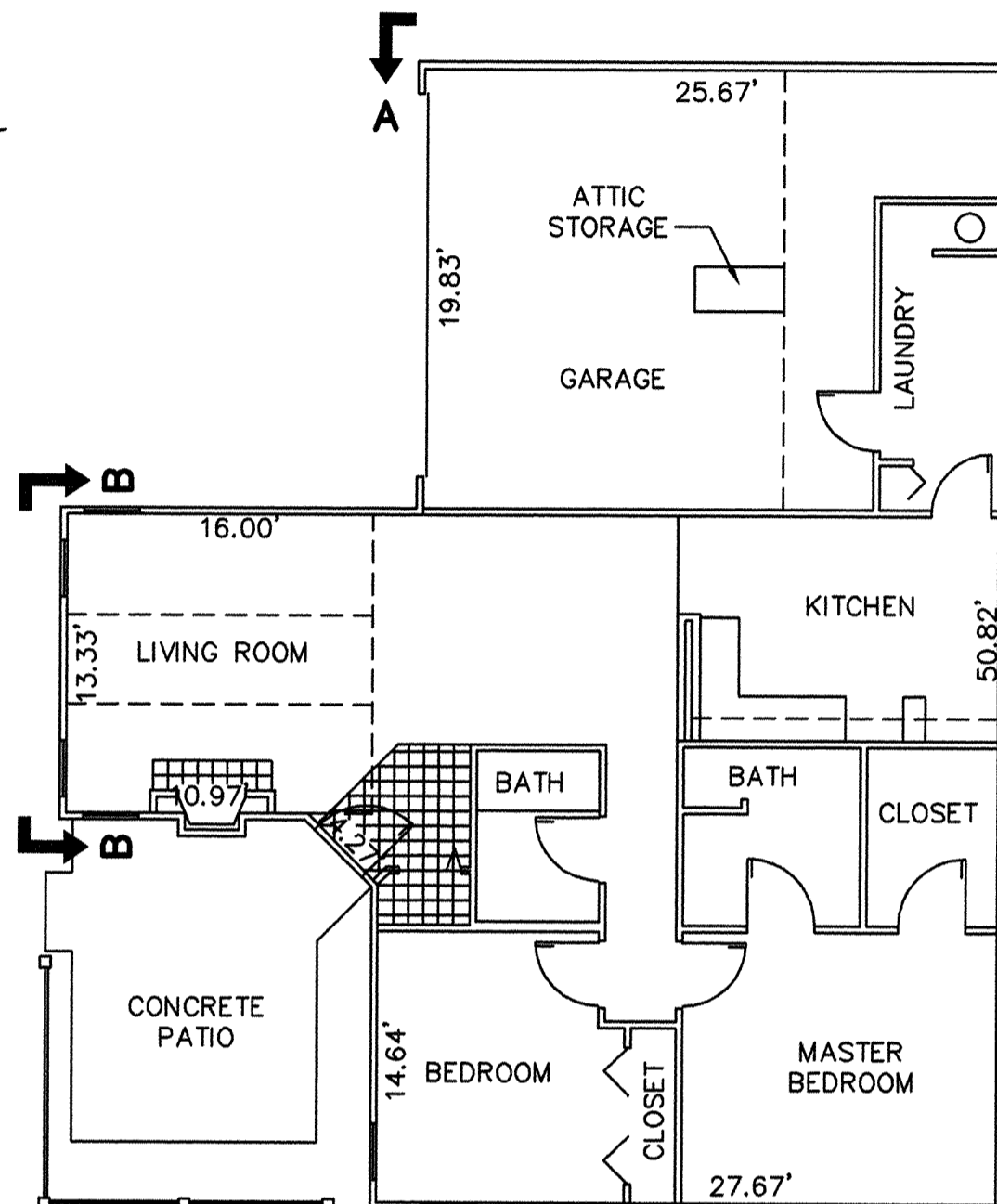
SIGNED: C.L. Pittman DATE: 7/13/02  
C.L. PITTMAN, P.E.



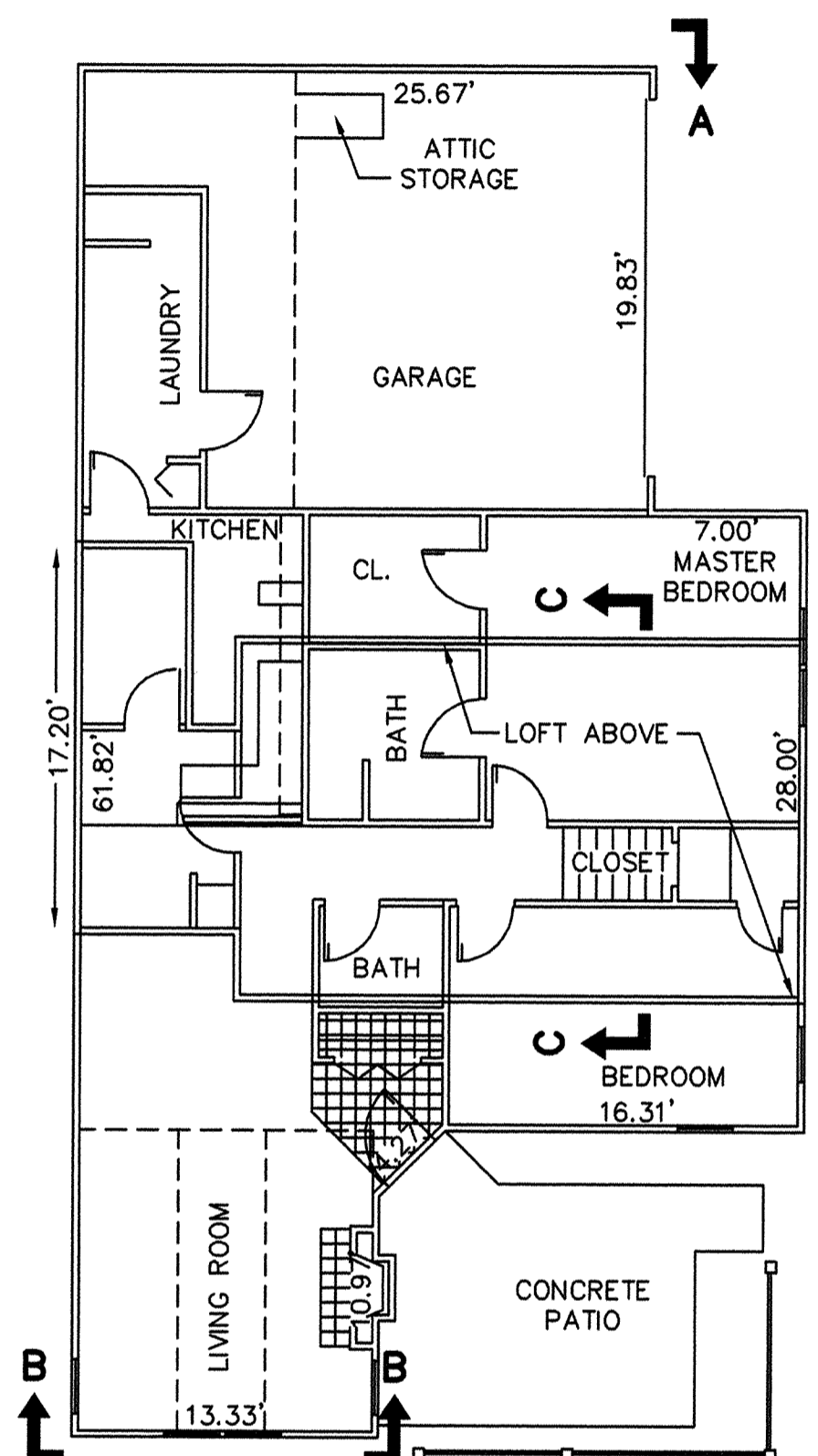
**EXHIBIT "D"**  
PLAT OF  
**RAINBROOK VILLAS**  
**A CONDOMINIUM**  
**PHASE XVI**

SHEET 3 OF 3  
GRAFTON DISTRICT - COUNTY OF YORK, VIRGINIA  
SCALE: 1/8" = 1'-0" MAY 14, 2001  
0 4 8 16 24 32 FEET  
GRAPHIC SCALE

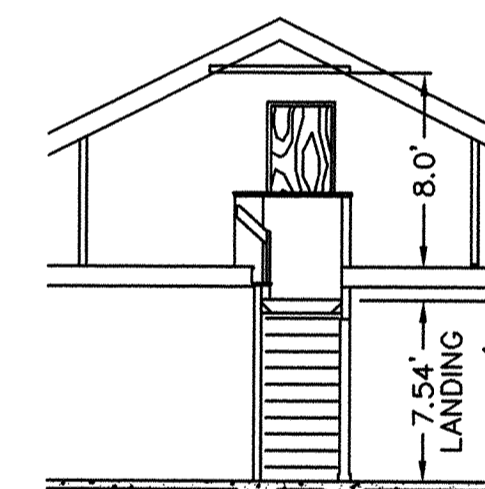
THE SIRINE GROUP, LTD.  
SURVEYORS • ENGINEERS • PLANNERS  
4794 GEORGE WASHINGTON MEMORIAL HIGHWAY  
U.S. ROUTE 17  
P.O. BOX 450  
WHITE MARSH, VIRGINIA 23183



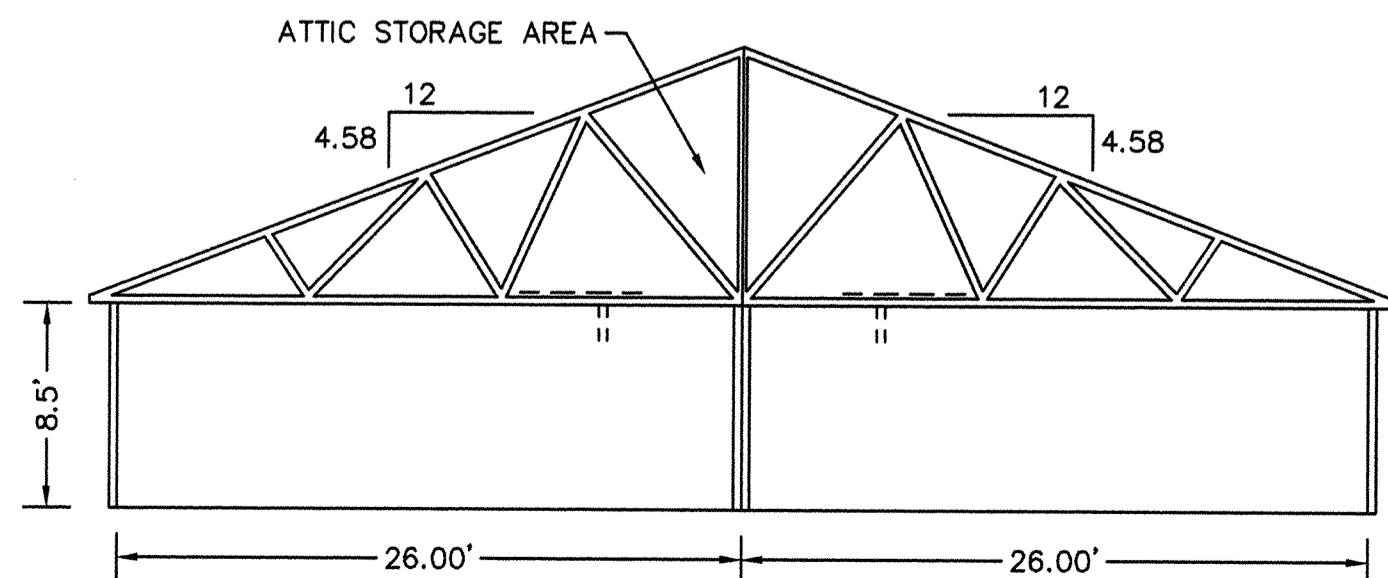
**BUILDING 4-1, & 4-3 - VILLA**  
**FLOOR PLAN**  
**W/ CONCRETE PATIO**



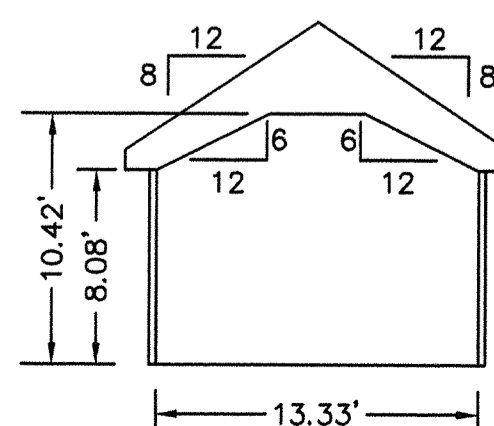
**BUILDING 4-2, & 4-4 - CHATEAU**  
**FLOOR PLAN**  
**W/ CONCRETE PATIO**



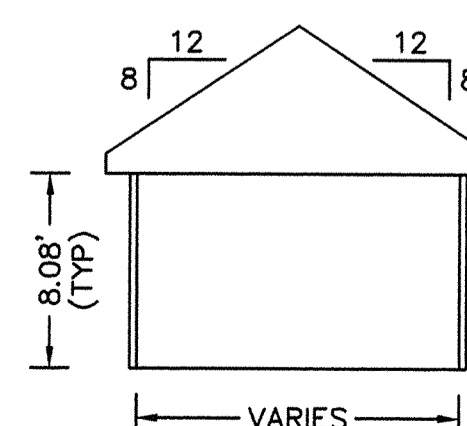
**SECTION C-C**  
**LOFT**



**SECTION A-A**  
**GARAGE**



**SECTION B-B**



**TYPICAL**  
**ROOM SECTION**

APPROVED:  
YORK COUNTY BOARD OF SUPERVISORS

BY: Al Maddalena

DATE: 7/15/02

NOTES:  
1. ALL BUILDING DIMENSIONS SHOWN HEREON ARE INTERIOR DIMENSIONS AND ARE IN FEET.

STATE OF VIRGINIA

COUNTY OF YORK

IN THE CLERK'S OFFICE OF THE CIRCUIT COURT FOR THE COUNTY OF YORK THE 17 DAY OF July, 2002, THIS PLAT WAS PRESENTED AND ADMITTED TO RECORD AS THE LAW DIRECTS. IN PLAT BOOK \_\_\_\_\_, PAGE \_\_\_\_\_, inst# 020014190

TESTE: Lynn S. Jenkins  
CLERK

BY: Lisa Brogden, D.C.