



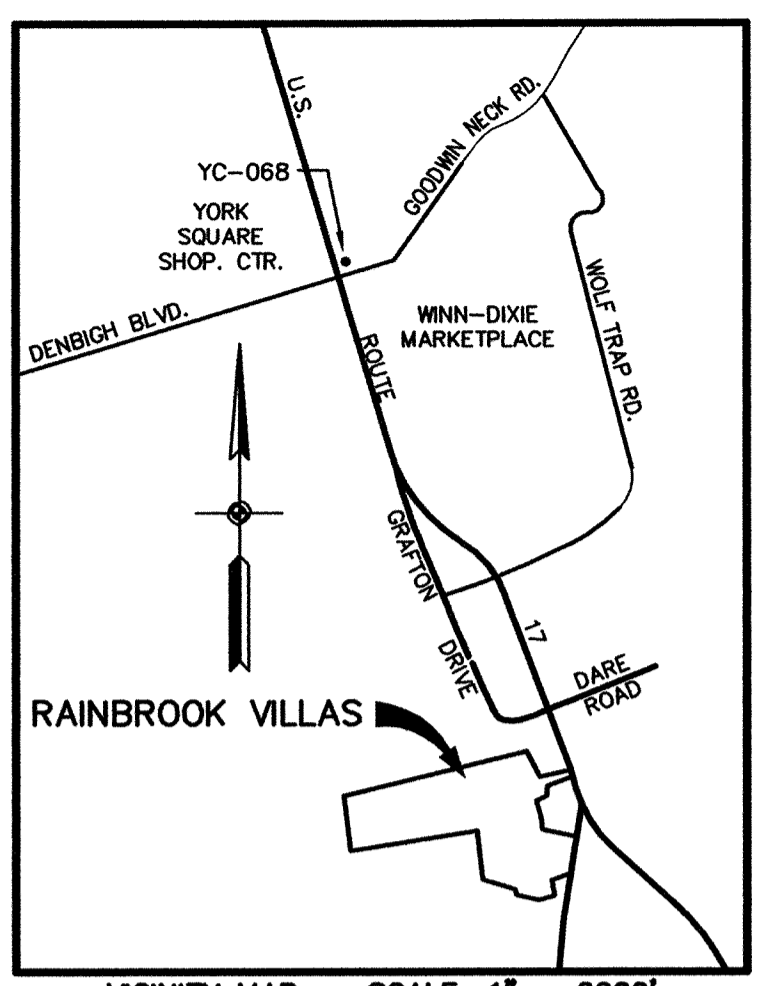
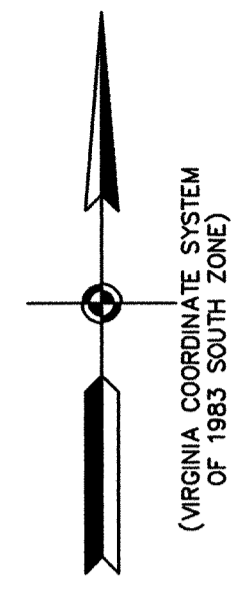
EXHIBIT "C" PLAT OF RAINBROOK VILLAS A CONDOMINIUM PHASE XVII (INSTR.#020005988) SHEET 1 OF 4

GRAFTON DISTRICT - COUNTY OF YORK, VIRGINIA SCALE: 1" = 100' AUGUST 1, 2002 GRAPHIC SCALE

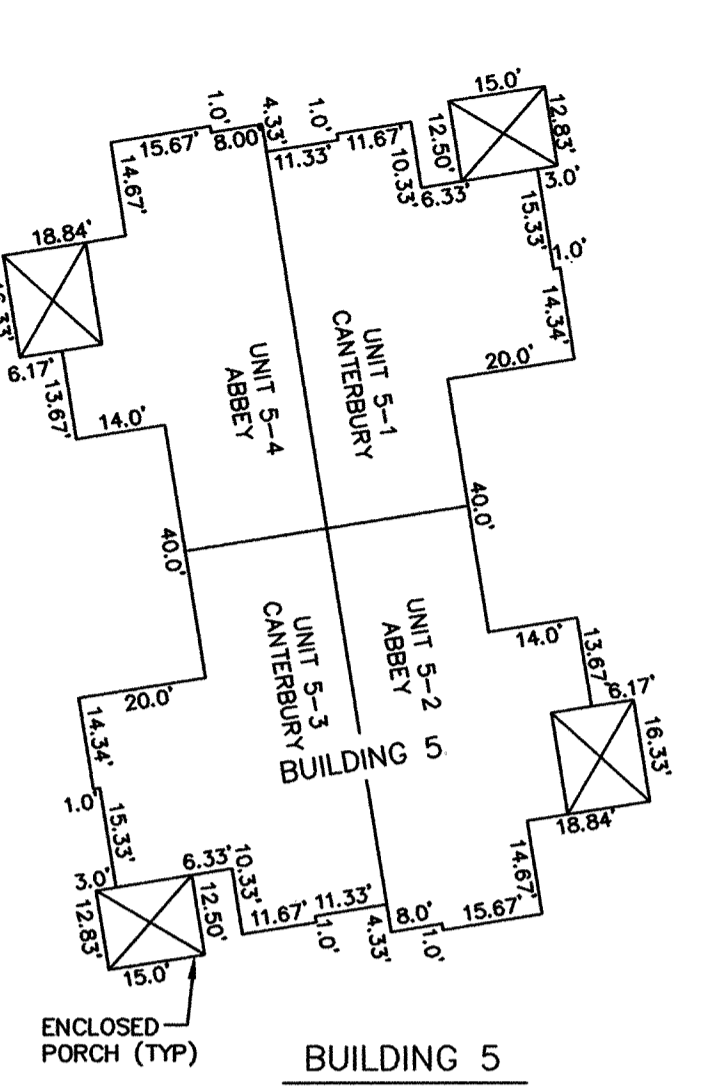
THE SIRINE GROUP, LTD. SURVEYORS • ENGINEERS • PLANNERS 4794 GEORGE WASHINGTON MEMORIAL HIGHWAY U.S. ROUTE 17 P.O. BOX 450 WHITE MARSH, VIRGINIA 23183

CURVE TABLE with columns: NO., RADIUS, DELTA, ARC, TANGENT, CHORD, CHORD BRG. Rows 1-14.

NOTE: PROPERTY LIES IN ZONE X, WHITE, (AREAS DETERMINED TO BE OUTSIDE 500-YEAR FLOOD PLAN), AS SHOWN ON FLOOD INSURANCE RATE MAP FOR YORK COUNTY, VIRGINIA, COMM. NO. 510182 0036B, 12/16/88 AND COMM. NO. 510182 0037B, 12/16/88.



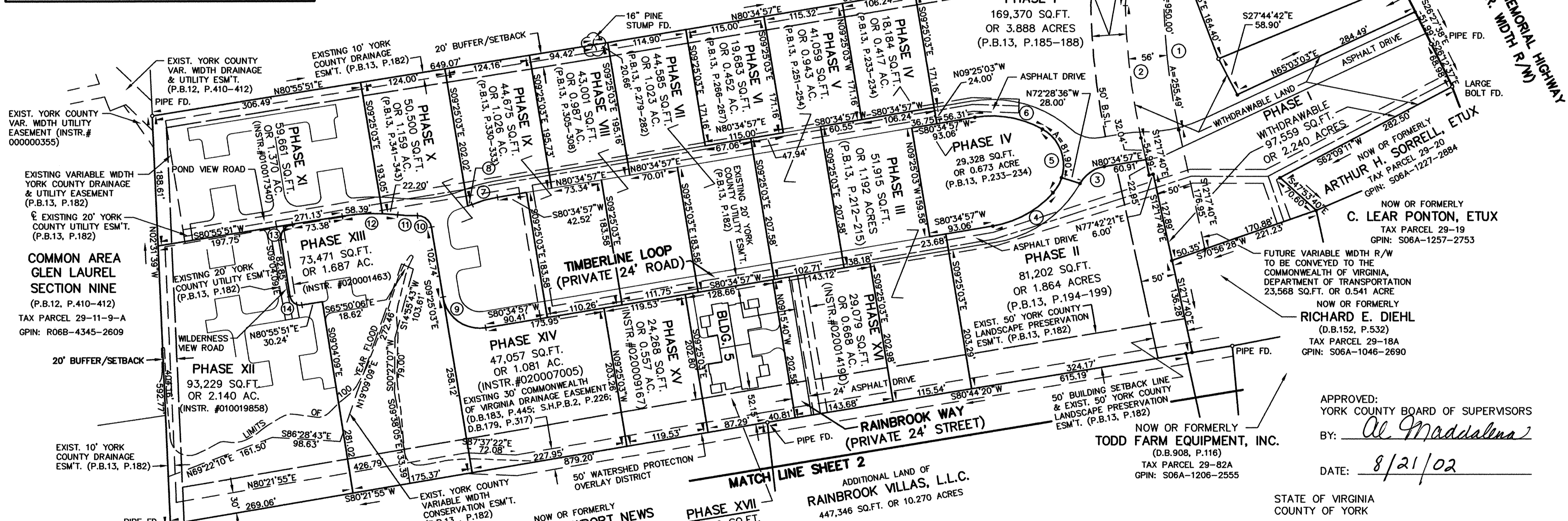
NOTE: ALL BUILDING DIMENSIONS SHOWN HEREON ARE EXTERIOR FRAMING DIMENSIONS AND ARE IN FEET.



NOW OR FORMERLY JOHN GOODE MARTIN, JR. & BETTY L. MARTIN (D.B.460, P.115; W.B.25, P.237; D.B.207, P.47) TAX PARCEL 29-17 GPIN: S06A-0403-3262

NOW OR FORMERLY R.T. ORKIE, EST. (D.B.83, P.61) TAX PARCEL 29-23 GPIN: S06A-1080-3132

NOW OR FORMERLY U.S. ROUTE 17 (VAR. WIDTH R/W) GEORGE WASHINGTON MEMORIAL HIGHWAY



UTILITY NOTES: WATER: EACH UNIT WITHIN THIS CONDOMINIUM IS SERVED BY PUBLIC WATER PROVIDED BY THE CITY OF NEWPORT NEWS. SEWER: EACH UNIT WITHIN THIS CONDOMINIUM IS SERVED BY PUBLIC SEWER PROVIDED BY THE COUNTY OF YORK AND H.R.S.D. PHASE XVII AREA = 26,009 SQ.FT. OR 0.597 ACRES ADDITIONAL AREA = 447,346 SQ.FT. OR 10.270 ACRES TOTAL AREA = 1,393,622 SQ.FT. OR 31.993 ACRES



NOW OR FORMERLY CITY OF NEWPORT NEWS (D.B.591, P.385) TAX PARCEL 23-00-00-014 GPIN: R06C-1589-2324

PHASE XVII 26,009 SQ.FT. OR 0.597 AC. ADDITIONAL LAND OF RAINBROOK VILLAS, L.L.C. 447,346 SQ.FT. OR 10.270 ACRES

NOW OR FORMERLY TODD FARM EQUIPMENT, INC. (D.B.908, P.116) TAX PARCEL 29-82A GPIN: S06A-1206-2555

APPROVED: YORK COUNTY BOARD OF SUPERVISORS BY: Al Maddalena DATE: 8/21/02

STATE OF VIRGINIA COUNTY OF YORK IN THE CLERK'S OFFICE OF THE CIRCUIT COURT FOR THE COUNTY OF YORK, VIRGINIA, THE 21st DAY OF August, 2002, THIS PLAT WAS PRESENTED AND ADMITTED TO RECORD AS THE LAW DIRECTS AS INSTRUMENT NUMBER: 020017068

TESTE: Lynn S. Jenkins CLERK BY: Ronda Higgins DEPUTY CLERK

PROPERTY IS ASSESSOR'S PARCEL 29-00-00-018 GPIN: S06C-0684-2246