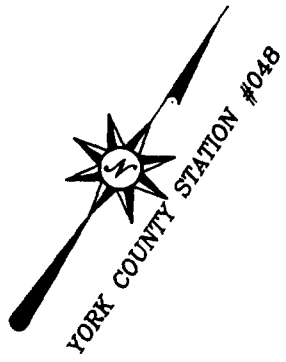


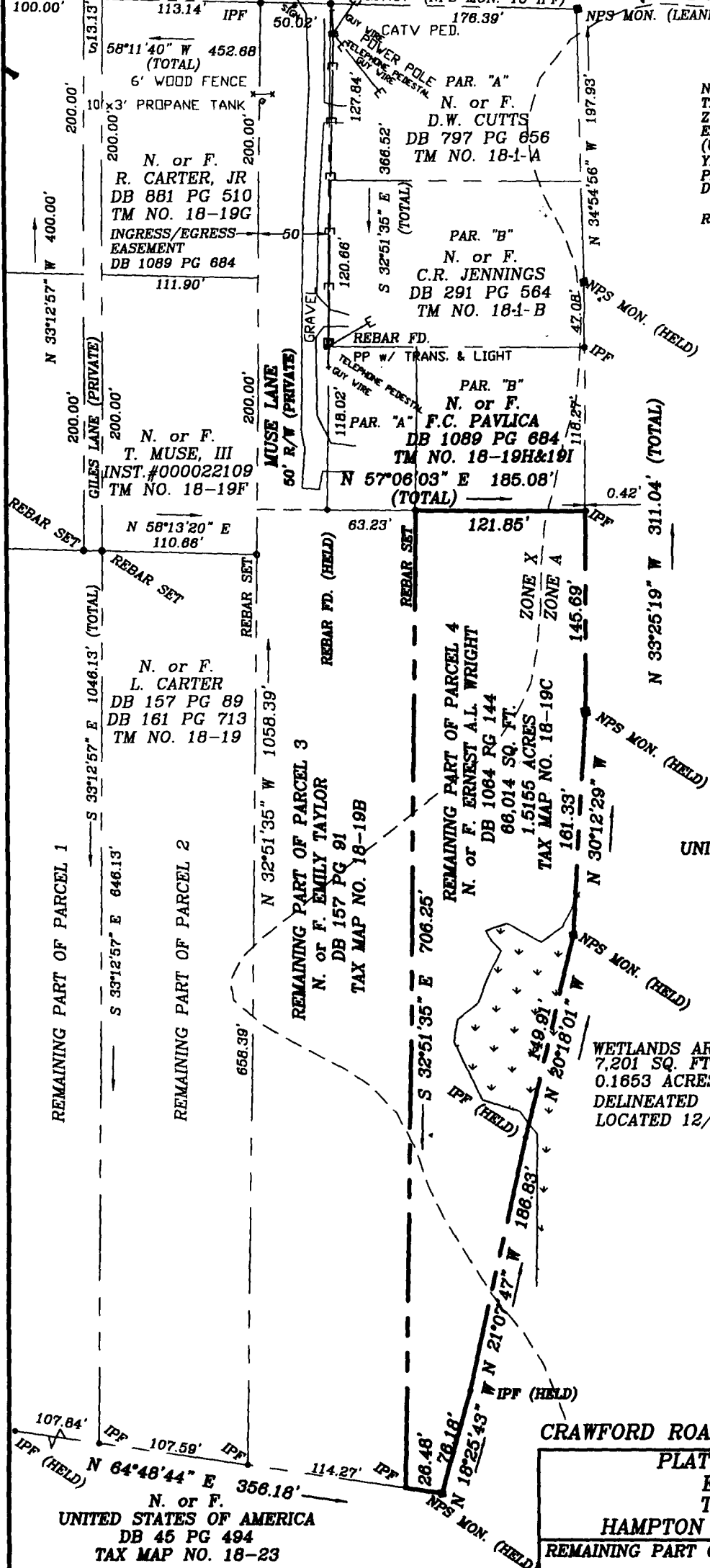
CRAWFORD ROAD REBAR SET EXIST. CENTERLINE OF PAVEMENT
ROUTE #637 30' R/W 1222± TO GOOSLEY RD.→
227.07' (NPS MON. TO IPF)

NOTE:
THIS PROPERTY IS LOCATED IN FIRM
ZONE A (SHADED, NO BASE FLOOD
ELEVATIONS DETERMINED) AND ZONE X
(UNSHADED, AREA OUTSIDE 500
YEAR FLOOD) AS SHOWN ON COMMUNITY
PANEL NO. 510182 0032 B DATED
DECEMBER 16, 1988.

REF: PB 2 PG 24, PB 2 PG 29, DB 157 PG 89,
DB 517 PG 502, DB 157 PG 91,
DB 1064 PG 144, DB 157 PG 93,
DB 157 PG 87, DB 657 PG 497,
INSTR. #000022109, DB 881 PG 510
DB 1089 PG 684, DB 797 PG 656
DB 291 PG 564, PB 6 PG 175
DB 241 PG 98, DB 190 PG 664,
DB 161 PG 713



PG 0285 SEP-5 02

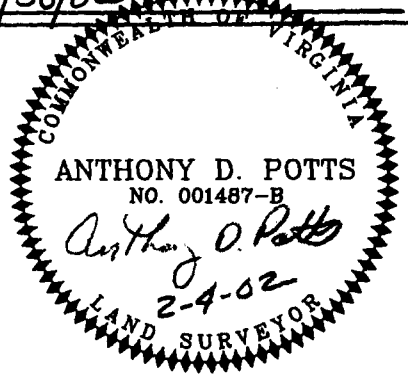


N. or F.
UNITED STATES OF AMERICA
DB 45 PG 494
TAX MAP NO. 18-23

THE PROPERTY AS DEPICTED ON THIS PLAT
DOES NOT VIOLATE THE PROVISIONS OF THE
YORK COUNTY SUBDIVISION ORDINANCE

SIGNED: *Al Maddalena*
TITLE: Chief of Development & Compliance
DATE: 8/30/02

WETLANDS AREA
7,201 SQ. FT.
0.1653 ACRES
DELINEATED WETLANDS
LOCATED 12/21/01



CRAWFORD ROAD GPIN #011D-3532-0534

PLAT OF THE PROPERTY OF
ERNEST A.L. WRIGHT
TO BE CONVEYED TO
HAMPTON ROADS DEVELOPMENT, L.L.C.
REMAINING PART OF PARCEL 4.....1.5155 ACRES

PARTITION PLAT OF SURVEY
10.71 ACRES OF
MUSE, EST.
NELSON DISTRICT, YORK COUNTY, VIRGINIA

ADPA A.D. POTTS & ASSOCIATES, INC.
11524 JEFFERSON AVENUE
NEWPORT NEWS, VIRGINIA
PHONE: (757)-595-4610
SCALE: 1"=100' DATE: 2/4/02

I HEREBY CERTIFY THAT THIS BOUNDARY SURVEY, TO THE
BEST OF MY KNOWLEDGE AND BELIEF IS CORRECT AND COMPLIES
WITH THE MINIMUM PROCEDURES AND STANDARDS ESTABLISHED
BY THE VIRGINIA BOARD FOR ARCHITECTS, PROFESSIONAL ENGINEERS,
LAND SURVEYORS, CERTIFIED INTERIOR DESIGNERS AND LANDSCAPE
ARCHITECTS

Anthony D. Potts
ANTHONY D. POTTS L.S.

838 1
F.B. 834 PG. 08 MUSE-PARCEL-4.DWG
JOB NO. 02-062
HRD, LLC/ADP

#117 Muse Lane