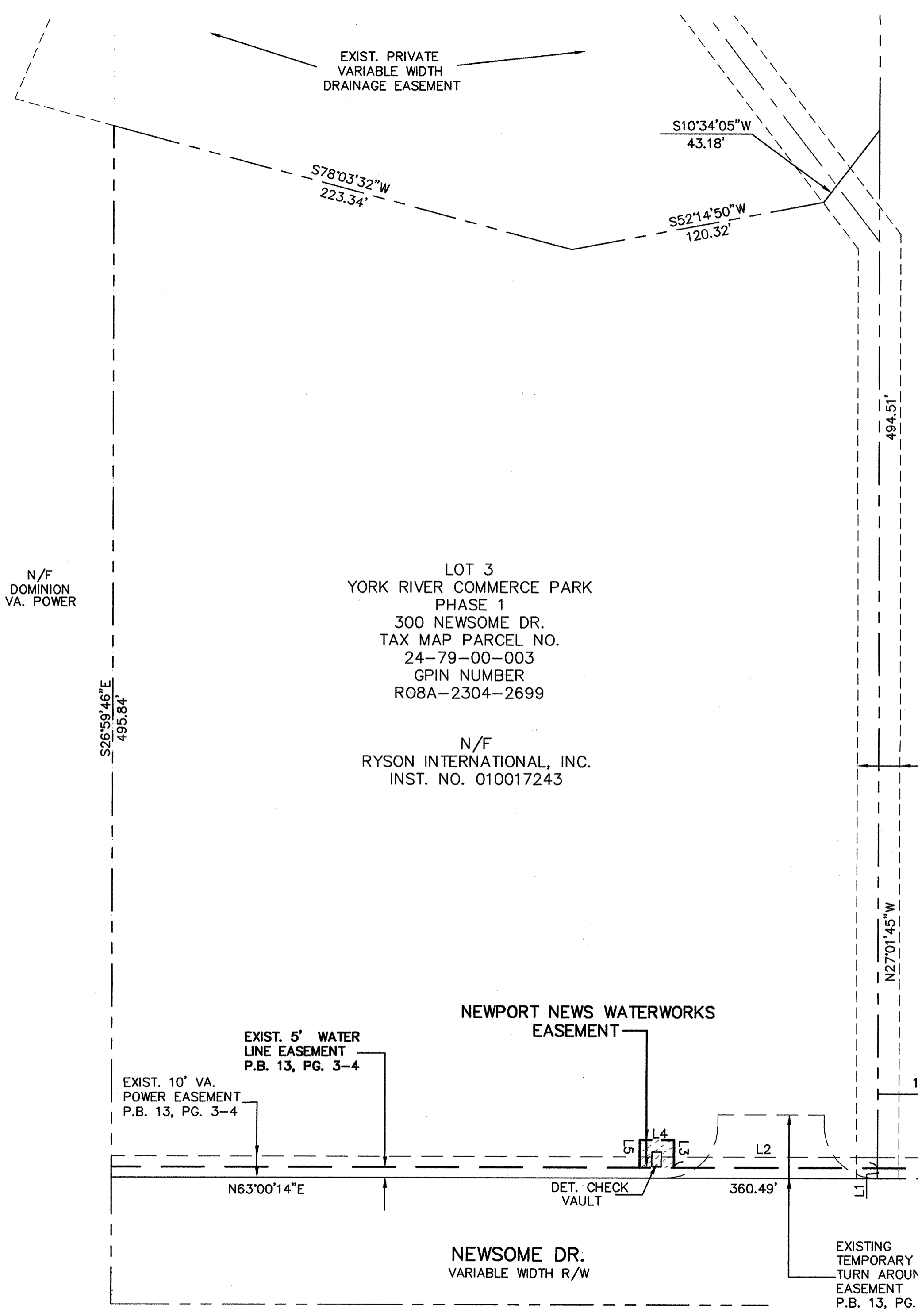




NOTES:

- 1) THIS PLAT WAS PREPARED WITHOUT THE BENEFIT OF A CURRENT TITLE REPORT AND THEREFORE MAY NOT DEPICT ALL TITLE MATTERS AFFECTING THE PROPERTY SHOWN HEREON.
- 2) PLAT OF YORK RIVER COMMERCE PARK, PHASE 1 RECORDED IN P.B. 13, PG. 3-4.



LINE TABLE		
LINE	LENGTH	BEARING
L1	5.00'	S27°01'45"E
L2	95.90'	N63°00'14"E
L3	13.00'	S26°59'46"E
L4	16.00'	S63°00'14"W
L5	13.00'	N26°59'46"W

Filed in the Clerk's Office, Circuit Court, York Co., VA
the 18th day of Sept, 2002

Teste: Lynn S. Jenkins, Clerk
by Peter Farrell, D.C.

**PLAT SHOWING EASEMENT
TO BE CONVEYED TO
NEWPORT NEWS WATERWORKS**

NELSON DISTRICT, YORK COUNTY, VIRGINIA

SCALE: 1" = 40' DATE: 07-11-02

REVISED: 07-18-02

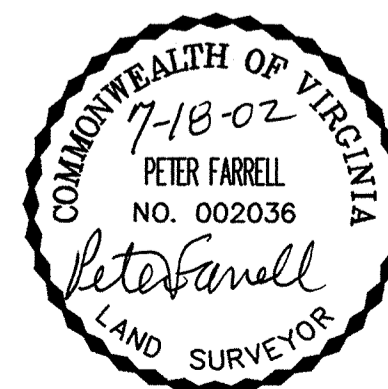
SHEET 1 OF 1

N.N.W.W. DRAWING NO. N-10675
COST EST. NO. 109 FY 02

**LANDMARK
DESIGN GROUP**

Engineers • Planners • Surveyors
Landscape Architects • Environmental Consultants

4029 Ironbound Road
Suite 100
Williamsburg, VA 23188
Tel. (757) 253-2975
Fax (757) 229-0049
Email: lmdg@landmarkdgb.com



PLAT APPROVED FOR RECORDATION

BY: J.B. August 8-26-02
PLAT APPROVING AGENT
Right-of-Way

GRAPHIC SCALE



(IN FEET)
1 inch = 40 ft.