

UTILITY NOTES:

WATER: EACH LOT OR PARCEL WITHIN THIS BOUNDARY LINE ADJUSTMENT CAN BE SERVED BY PUBLIC WATER. CURRENTLY EACH PARCEL IS SERVED BY PRIVATE WELL.

SEWER: EACH LOT OR PARCEL WITHIN THIS BOUNDARY LINE ADJUSTMENT IS SERVED BY PUBLIC SEWER.

NONE OF THE AREA CONTAINED WITHIN THIS BOUNDARY LINE ADJUSTMENT IS WITHIN A RESOURCE PROTECTION AREA OR RESOURCE MANAGEMENT AREA.

The land proposed to be conveyed or exchanged by deeds recorded contemporaneously herewith shall not for any purpose be or become a separate or independent lot, tract or parcel but for all purposes shall become and be considered a part of the adjacent lot, tract or parcel already owned by Wiltshire, Inc. and Virginia Trusses, Inc. at the time of this conveyance or exchange.

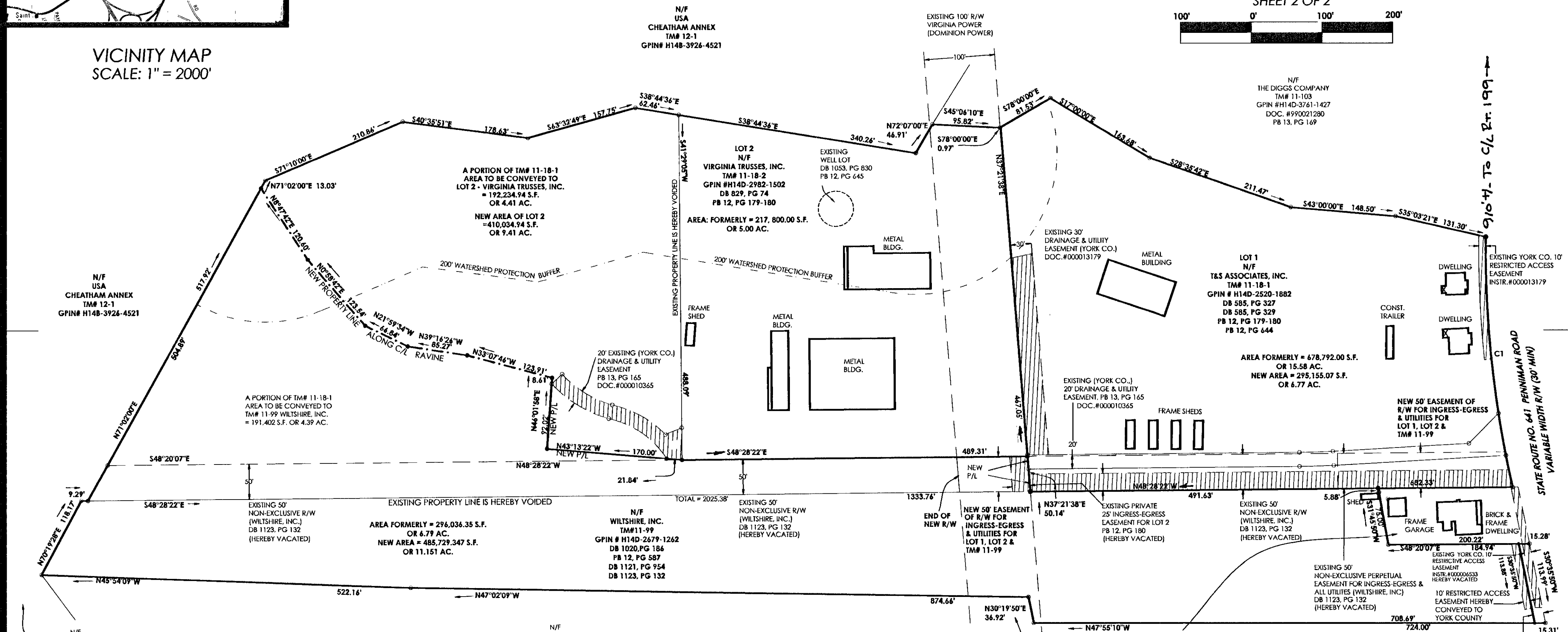
**BOUNDARY LINE ADJUSTMENT
OF PROPERTY STANDING IN THE NAME OF
T&S ASSOCIATES, INC., VIRGINIA TRUSSES, INC.,
& WILTSHIRE, INC.**

LOCATED: BRUTON MAGISTERIAL DISTRICT
COUNTY OF YORK, VIRGINIA
DATE: NOVEMBER 2, 2001 SCALE: 1" = 100'

MITCHELL-WILSON ASSOCIATES, P.C.
CIVIL ENGINEERS & LAND SURVEYORS
720 MAIN STREET, SUITE 112
P.O. BOX 1269
WEST POINT, VIRGINIA 23181
(804) 843-9744
SHEET 2 OF 2



VICINITY MAP
SCALE: 1" = 2000'

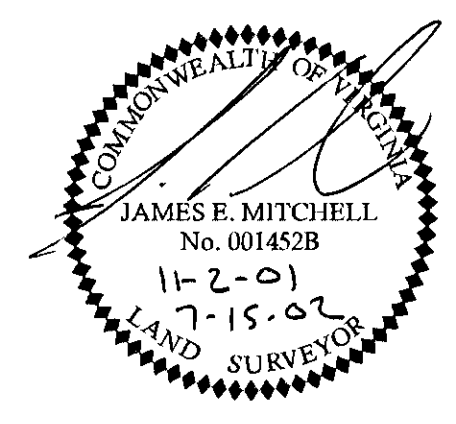


N/F
BUSCH PROPERTIES, INC.
TM# 11-16-2
GPIN #H14C-1242-1404
DB 765, PG 99
PB 11, PG 686

N/F
WILLIAM & MARY O. RANDALL EST
TM# 11-98
GPIN #H14D-2460-1065
DB 37, PG 339
DB 39, PG 10

N/F
WILTSHIRE, INC.
TM# 11-100
GPIN #H14D-3435-0698
DB 1080, PG 421
PLAT IN DB 251, PG 408
DB 1121, PG 954
DB 1123, PG 132

APPROVED
YORK COUNTY BOARD OF SUPERVISORS
BY: *M. Maddalena*
PLAT APPROVING AGENT
DATE: 9-27-02



STATE OF VIRGINIA
COUNTY OF YORK
IN THE CLERK'S OFFICE OF THE CIRCUIT COURT FOR THE COUNTY OF YORK,
THE 1st DAY OF October, 2002. THIS MAP WAS PRESENTED AND
ADMITTED TO RECORD AS THE LAW DIRECTS AS INSTRUMENT #020019401
8:44 am
TESTE: *Lynn S. Jenkins*
CLERK
BY: *S. White, D.C.*

CURVE DATA:

DELTA	=	13°26'39"
RADIUS	=	1519.54'
LENGTH	=	358.55'
TAN.	=	355.73'
CHORD	=	179.10'
CB	=	S35°53'18"W

- LEGEND
- IRON ROD SET
 - COMPUTED POINT/FOUND MONUMENT
 - PROPERTY LINE
 - - - EASEMENT LINE