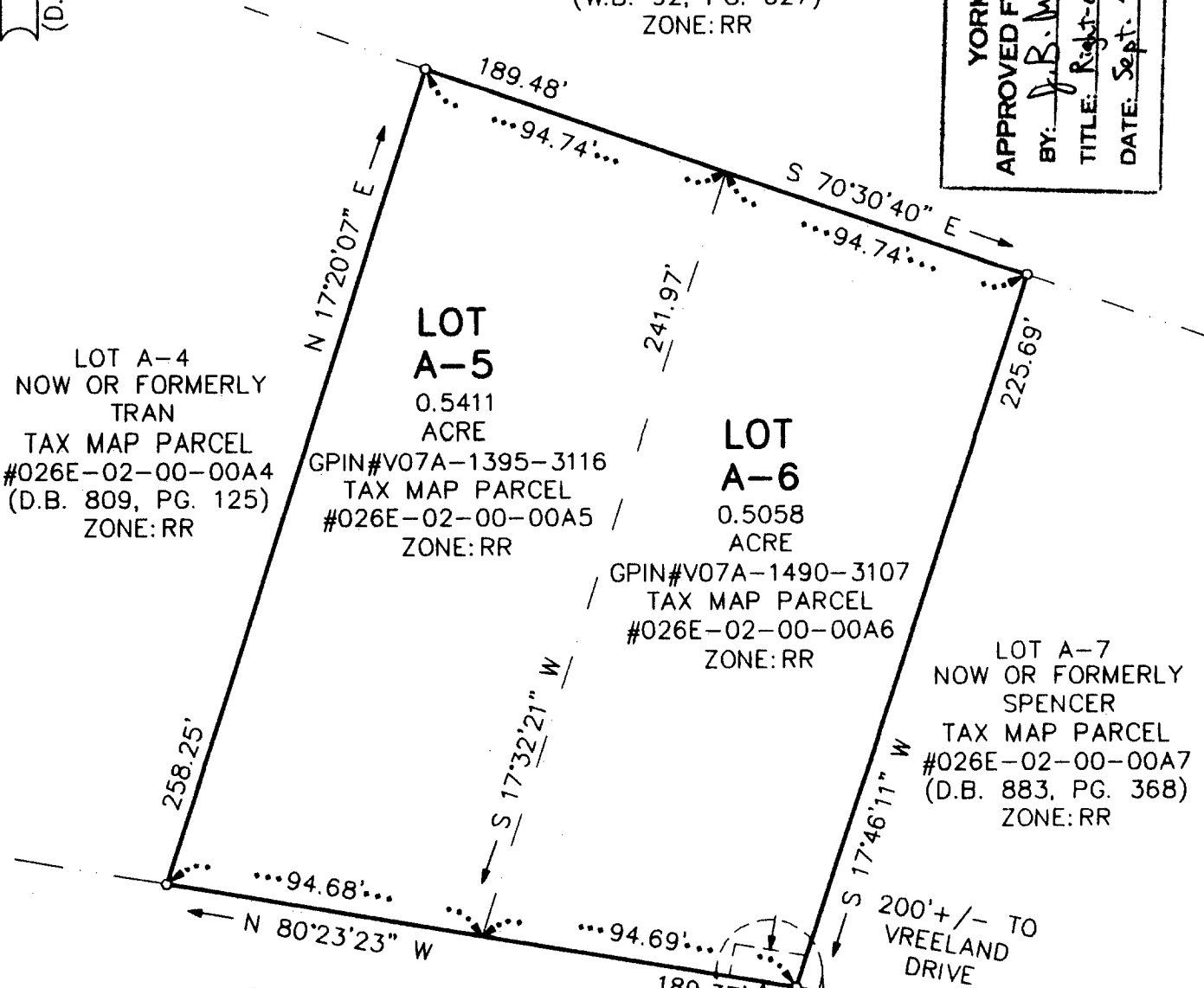


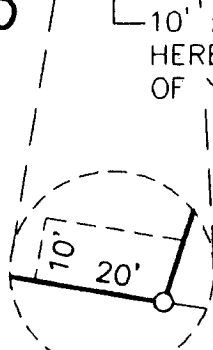


NOW OR FORMERLY
RITTER
TAX MAP PARCEL
#026D-01-00-009D
(W.B. 92, PG. 627)
ZONE: RR

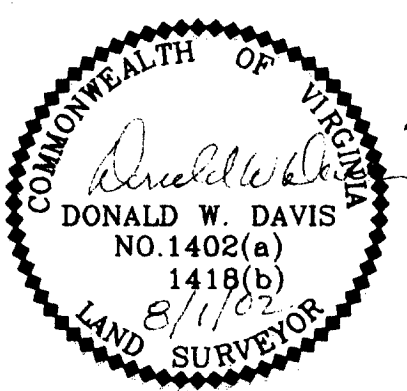
YORK COUNTY
APPROVED FOR RECORDATION
BY: *J. B. Ingalls*
TITLE: *Right-of-Way Agent*
DATE: *Sept. 23, 2002*



NOTES :
1. NO PHYSICAL IMPROVEMENTS
ARE SHOWN HEREON.
2. THIS PLAT MUST BE APPROVED
BY THE COUNTY OF YORK FOR
RECORDATION.



DETAIL
SCALE: 1"=30'



REFERENCE NOTES
(D.B. 137, PG. 29)
(D.B. 991, PG. 580)

PLAT OF EASEMENT DEDICATION
FROM: ALVAH S. MOORE, JR.
TO: COUNTY OF YORK
LOCATION: #717 SHIP POINT ROAD
COUNTY OF YORK, VIRGINIA

SCALE : 1" = 50' DATE : 1 AUG. 2002

DAVIS & ASSOCIATES, P.C.
SURVEYORS - PLANNERS
3630 GEO. WASH. MEM. HWY - SUITE "G"
YORKTOWN, VIRGINIA 23693