

PARCEL 10-00-00-005 CONTAINING 86.6± ACRES

THIS IS TO CERTIFY THAT THE PARCEL OF LAND CONTAINING 86.6± ACRES IS IN THE NAME OF MID-ATLANTIC HOLDINGS, L.L.C., A VIRGINIA LIMITED LIABILITY COMPANY AND WAS ACQUIRED FROM ROSALIE S. DETCH BY DEED DATED OCT. 22, 2002 AND RECORDED AS INSTRUMENT NUMBER 020022633 IN THE CLERK'S OFFICE OF THE CIRCUIT COURT FOR YORK COUNTY, VIRGINIA.

PARCEL 10-16-00-000A CONTAINING 119.18± ACRES

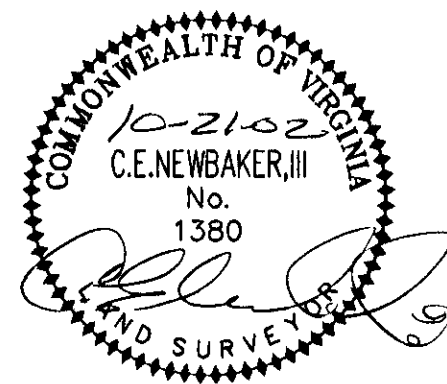
THIS IS TO CERTIFY THAT PARCEL A CONTAINING 119.18± ACRES IS IN THE NAME OF MID-ATLANTIC HOLDINGS, L.L.C., A VIRGINIA LIMITED LIABILITY COMPANY AND WAS ACQUIRED FROM ROSALIE S. DETCH BY DEED DATED OCT. 22, 2002 AND RECORDED AS INSTRUMENT NUMBER 020022633 IN THE CLERK'S OFFICE OF THE CIRCUIT COURT FOR YORK COUNTY, VIRGINIA.

PARCEL 07A3-09-00-044A CONTAINING 22.411 ACRES

THIS IS TO CERTIFY THAT THE PARCEL OF LAND CONTAINING 22.411 ACRES IS IN THE NAME OF COUNTY SCHOOL BOARD OF YORK COUNTY AND WAS ACQUIRED FROM QUEENS LAKE DEVELOPMENT COMPANY, INCORPORATED BY DEED DATED DECEMBER 30, 1965 AND RECORDED IN DEED BOOK 192, PAGE 633 IN THE CLERK'S OFFICE OF THE CIRCUIT COURT FOR YORK COUNTY, VIRGINIA.

TO THE BEST OF MY KNOWLEDGE AND BELIEF, ALL THE REQUIREMENTS AS SET FORTH IN THE SUBDIVISION ORDINANCE OF THE COUNTY OF YORK, VIRGINIA, HAVE BEEN COMPLIED WITH, INCLUDING A CLOSURE OF NOT LESS THAN 1'/20,000'. I CERTIFY THAT THE MONUMENTS AND IRON PINS AS SHOWN ON THIS PLAT WILL BE SET ON OR BEFORE DECEMBER 31, 2003.

C.E. Newbaker, III
 C.E. NEWBAKER, III, L.S. # 1380
 10-21-02
 DATE:



LEGEND:

- DENOTES PIN SET
- DENOTES PIN, PIPE, OR MONUMENT FOUND
- (1011.24') DENOTES LOT LINE HEREBY VOIDED.
- RPA DENOTES RESOURCE PROTECTION AREA
- RMA DENOTES RESOURCE MANAGEMENT AREA

CURVE TABLE

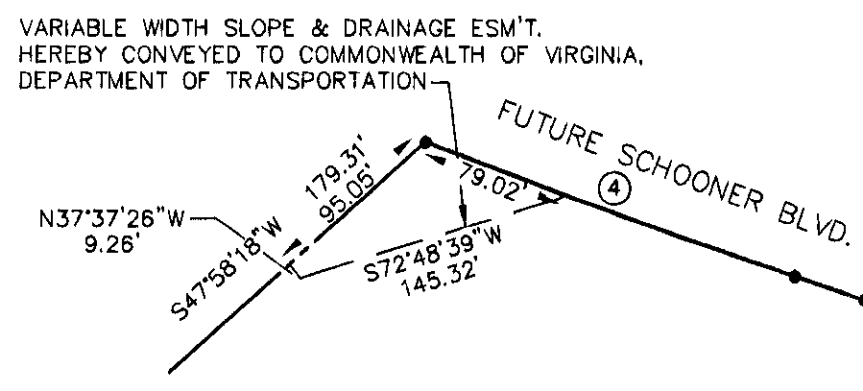
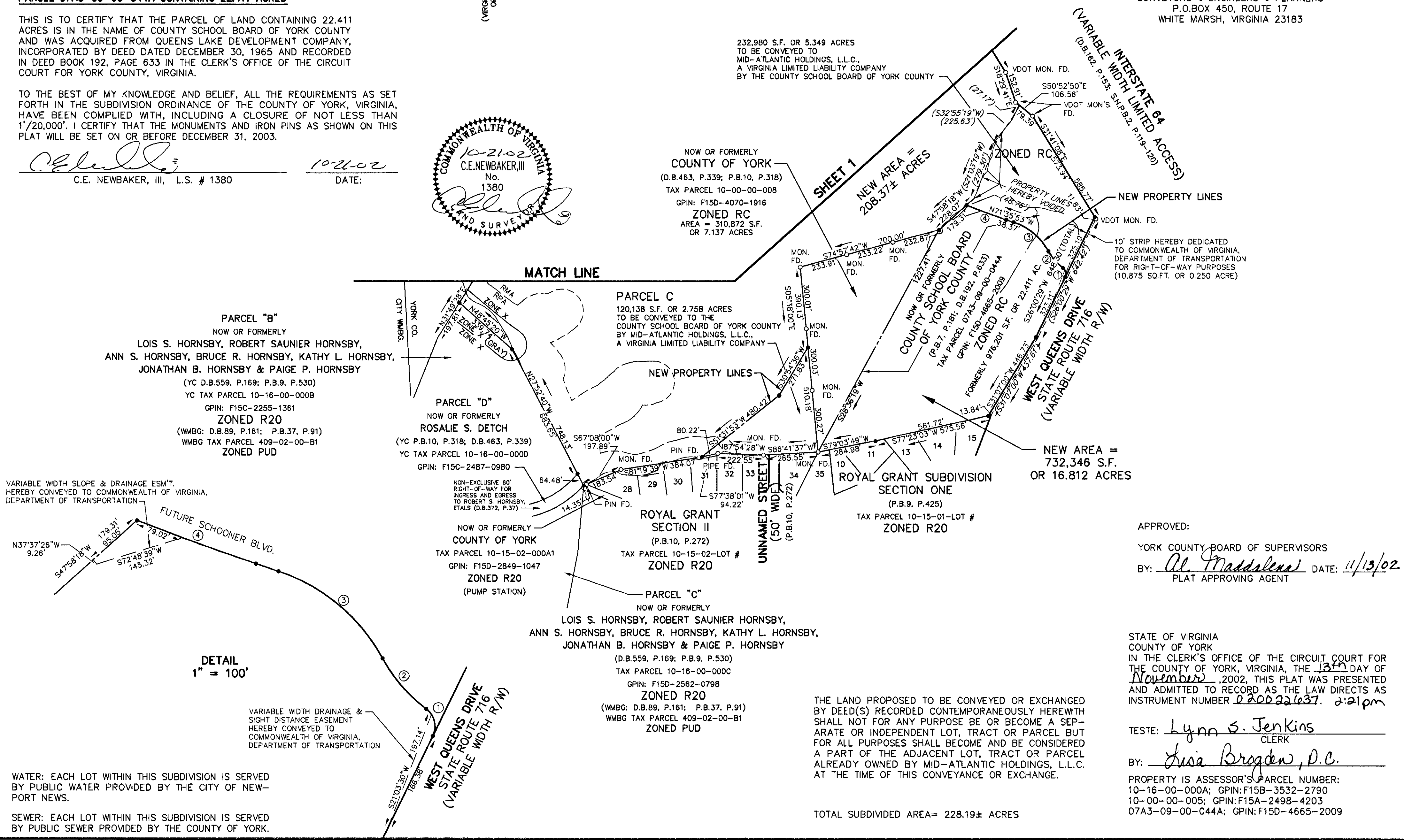
NO.	RADIUS	DELTA	ARC	TANGENT	CHORD	CHORD BRG.
1	35.00'	79°33'14"	48.60'	29.14'	44.79'	N13°46'08"W
2	250.00'	24°58'50"	109.00'	55.38'	108.14'	N41°03'21"W
3	300.00'	43°01'58"	225.32'	118.27'	220.06'	N50°04'55"W
4	4000.00'	02°56'12"	205.01'	102.53'	204.99'	N70°07'48"W

BOUNDARY LINE ADJUSTMENT & SUBDIVISION OF THE PROPERTIES OF MID-ATLANTIC HOLDINGS, L.L.C., A VIRGINIA LIMITED LIABILITY COMPANY & COUNTY SCHOOL BOARD OF YORK COUNTY

BRUTON DISTRICT - COUNTY OF YORK, VIRGINIA
 SCALE: 1"=300' SEPTEMBER 23, 2002
 0 150 300 600 900 1200 FEET

GRAPHIC SCALE
SHEET 2 OF 2

THE SIRINE GROUP, LTD.
 SURVEYORS • ENGINEERS • PLANNERS
 P.O. BOX 450, ROUTE 17
 WHITE MARSH, VIRGINIA 23183



WATER: EACH LOT WITHIN THIS SUBDIVISION IS SERVED BY PUBLIC WATER PROVIDED BY THE CITY OF NEWPORT NEWS.
 SEWER: EACH LOT WITHIN THIS SUBDIVISION IS SERVED BY PUBLIC SEWER PROVIDED BY THE COUNTY OF YORK.

APPROVED:
 YORK COUNTY BOARD OF SUPERVISORS
 BY: *Al. Maddalena* DATE: 11/13/02
 PLAT APPROVING AGENT

STATE OF VIRGINIA
 COUNTY OF YORK
 IN THE CLERK'S OFFICE OF THE CIRCUIT COURT FOR THE COUNTY OF YORK, VIRGINIA, ON 13th DAY OF November, 2002, THIS PLAT WAS PRESENTED AND ADMITTED TO RECORD AS THE LAW DIRECTS AS INSTRUMENT NUMBER 020022633. 2:21pm

TESTE: *Lynn S. Jenkins*
 CLERK

BY: *Lisa Brogden, P.C.*

PROPERTY IS ASSESSOR'S PARCEL NUMBER:
 10-16-00-000A; GPIN: F15B-3532-2790
 10-00-00-005; GPIN: F15A-2498-4203
 07A3-09-00-044A; GPIN: F15D-4665-2009

TOTAL SUBDIVIDED AREA= 228.19± ACRES