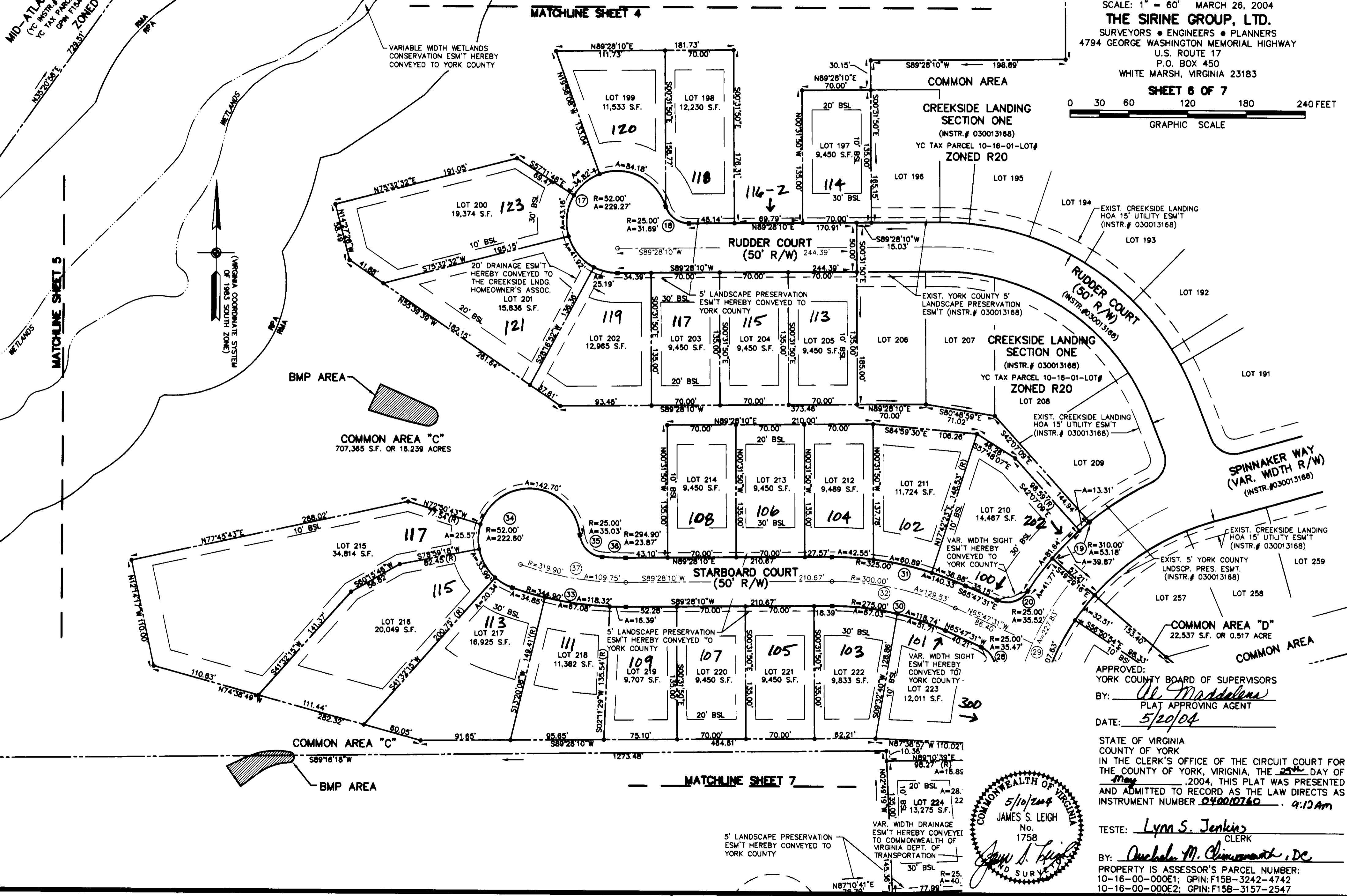


PARCEL A-1
NOW OR FORMERLY
MID-ATLANTIC HOLDINGS, L.L.C.
(YC INSTR. # 020022833; 030038737)
YC TAX PARCEL 10-16-00-000A
GPM F15A-2488-4203
ZONED R20

BMP AREA
COMMON AREA "C"
707,365 S.F. OR 16.239 ACRES

SUBDIVISION PLAT
CREEKSID LANDING
SECTION THREE
BRUTON DISTRICT - COUNTY OF YORK, VIRGINIA
SCALE: 1" = 60' MARCH 26, 2004
THE SIRINE GROUP, LTD.
SURVEYORS • ENGINEERS • PLANNERS
4794 GEORGE WASHINGTON MEMORIAL HIGHWAY
U.S. ROUTE 17
P.O. BOX 450
WHITE MARSH, VIRGINIA 23183
SHEET 6 OF 7
0 30 60 120 180 240 FEET
GRAPHIC SCALE



MATCHLINE SHEET 5

MATCHLINE SHEET 4

MATCHLINE SHEET 7

APPROVED:
YORK COUNTY BOARD OF SUPERVISORS
BY: U. Maddalena
PLAT APPROVING AGENT
DATE: 5/20/04

STATE OF VIRGINIA
COUNTY OF YORK
IN THE CLERK'S OFFICE OF THE CIRCUIT COURT FOR
THE COUNTY OF YORK, VIRGINIA, THE 25th DAY OF
May, 2004, THIS PLAT WAS PRESENTED
AND ADMITTED TO RECORD AS THE LAW DIRECTS AS
INSTRUMENT NUMBER 040010760 9:12 Am

COMMONWEALTH OF VIRGINIA
5/10/2004
JAMES S. LEIGH
No. 1758
CLERK

TESTE: Lynn S. Jenkins
CLERK
BY: Orchard M. Chinnick, DC
PROPERTY IS ASSESSOR'S PARCEL NUMBER:
10-16-00-000E1; GPIN: F15B-3242-4742
10-16-00-000E2; GPIN: F15B-3157-2547