

CURVE TABLE						
CURVE	LENGTH	RADIUS	TANGENT	CHORD	DELTA	BEARING
C1	35.34	20.00	24.36	30.92	101°14'00"	S49°03'42"E
C2	51.68	20.00	69.87	38.46	148°03'15"	S75°34'55"W
C3	38.65	20.00	28.94	32.91	110°42'45"	N24°57'56"E

LINE TABLE		
LINE	LENGTH	BEARING
L1	22.00	N30°23'27"W
L2	55.88	N59°36'33"E
L3	40.00	N88°26'42"W

VIRGINIA STATE PLANE COORDINATE SYSTEM, SOUTH ZONE (NAD 1983)

WAWA, INC.
INSTRUMENT #LR020025594
(D.B. 163, PG. 375)
TAX MAP: 10-12-00-0000
TAX MAP: 10-11-00-0001
GPIN: F14d-3410-0883
GPIN: F14d-3384-1000
GPIN: F14d-3397-0943
ZONED GB

LOT 1, YORK WAYSIDE
DANK, INC.
(DB 479, PG 382)
(PB 9, PG 97)
TAX MAP 10-04-00-001
GPIN F14d-3352-1091
ZONED GB

WAWA, INC.
INSTRUMENT #LR020025594
(D.B. 163, PG. 375)
TAX MAP: 10-12-00-0000
TAX MAP: 10-11-00-0001
TAX MAP: 10-11-00-0002
GPIN: F14d-3410-0883
GPIN: F14d-3384-1000
GPIN: F14d-3397-0943
ZONED GB



RESUBDIVISION OF
THE BINGLEY ESTATE

YORK COUNTY, VIRGINIA
BRUTON DISTRICT
FEBRUARY 4, 2003

MSA, P.C.

Landscape Architecture · Planning · Surveying
Engineering · Environmental Sciences
5033 ROUSE DRIVE, VIRGINIA BEACH, VA 23462-3708
PHONE (757) 490-9264 · FAX (757) 490-0634

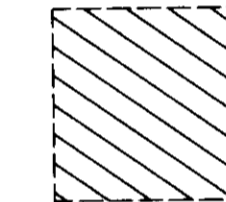


GRAPHIC SCALE
1" = 50'

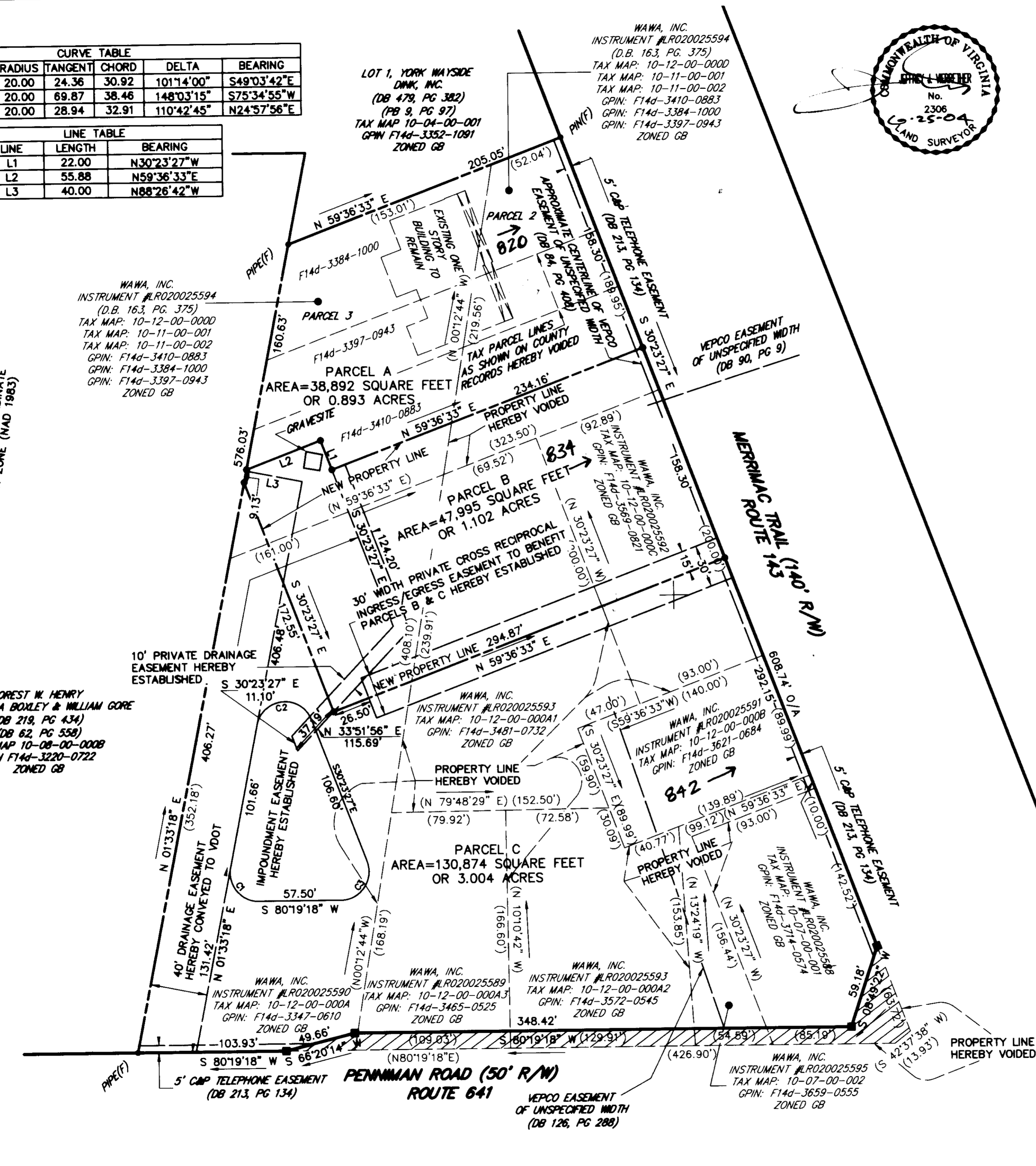
SHEET 2 OF 2

LEGEND

- IRON PIN/PIPE FOUND - PIN(F), PIPE(F)
- IRON PIN SET - PIN(S)
- MONUMENT FOUND - MON(F)
- MONUMENT SET - MON(S)



DENOTES VARIABLE WIDTH STRIP HEREBY DEDICATED TO THE COMMONWEALTH OF VIRGINIA, DEPARTMENT OF TRANSPORTATION FOR RIGHT-OF-WAY PURPOSES AREA=6.039 SQUARE FEET OR 0.139 ACRES



FOREST W. HENRY
PLAT OF IDA BOXLEY & WILLIAM GORE
(DB 219, PG 434)
(DB 62, PG 558)
TAX MAP 10-08-00-0008
GPIN F14d-3220-0722
ZONED GB

WAWA, INC.
INSTRUMENT #LR020025593
TAX MAP: 10-12-00-000A1
GPIN: F14d-3481-0732
ZONED GB

WAWA, INC.
INSTRUMENT #LR020025591
TAX MAP: 10-12-00-000B
GPIN: F14d-3621-0684
ZONED GB

WAWA, INC.
INSTRUMENT #LR020025590
TAX MAP: 10-12-00-000A
GPIN: F14d-3347-0610
ZONED GB

WAWA, INC.
INSTRUMENT #LR020025589
TAX MAP: 10-12-00-000A3
GPIN: F14d-3465-0525
ZONED GB

WAWA, INC.
INSTRUMENT #LR020025593
TAX MAP: 10-12-00-000A2
GPIN: F14d-3572-0545
ZONED GB

WAWA, INC.
INSTRUMENT #LR020025595
TAX MAP: 10-07-00-002
GPIN: F14d-3659-0555
ZONED GB

APPROVED

YORK COUNTY BOARD OF SUPERVISORS

BY: Al Maddalena
PLAT APPROVING AGENT

DATE: 7/16/04

STATE OF VIRGINIA
COUNTY OF YORK

POQUOSON, VA

IN THE CLERK'S OFFICE OF THE CIRCUIT COURT FOR THE COUNTY OF YORK, ON THE 21ST DAY OF July, 2004, THIS MAP WAS PRESENTED AND ADMITTED TO RECORD AS THE LAW DIRECTS AS INSTRUMENT NO. 040015336 1:17 pm

TESTE: Lynn S. Jenkins, CLERK.

BY: Dorena Cooper