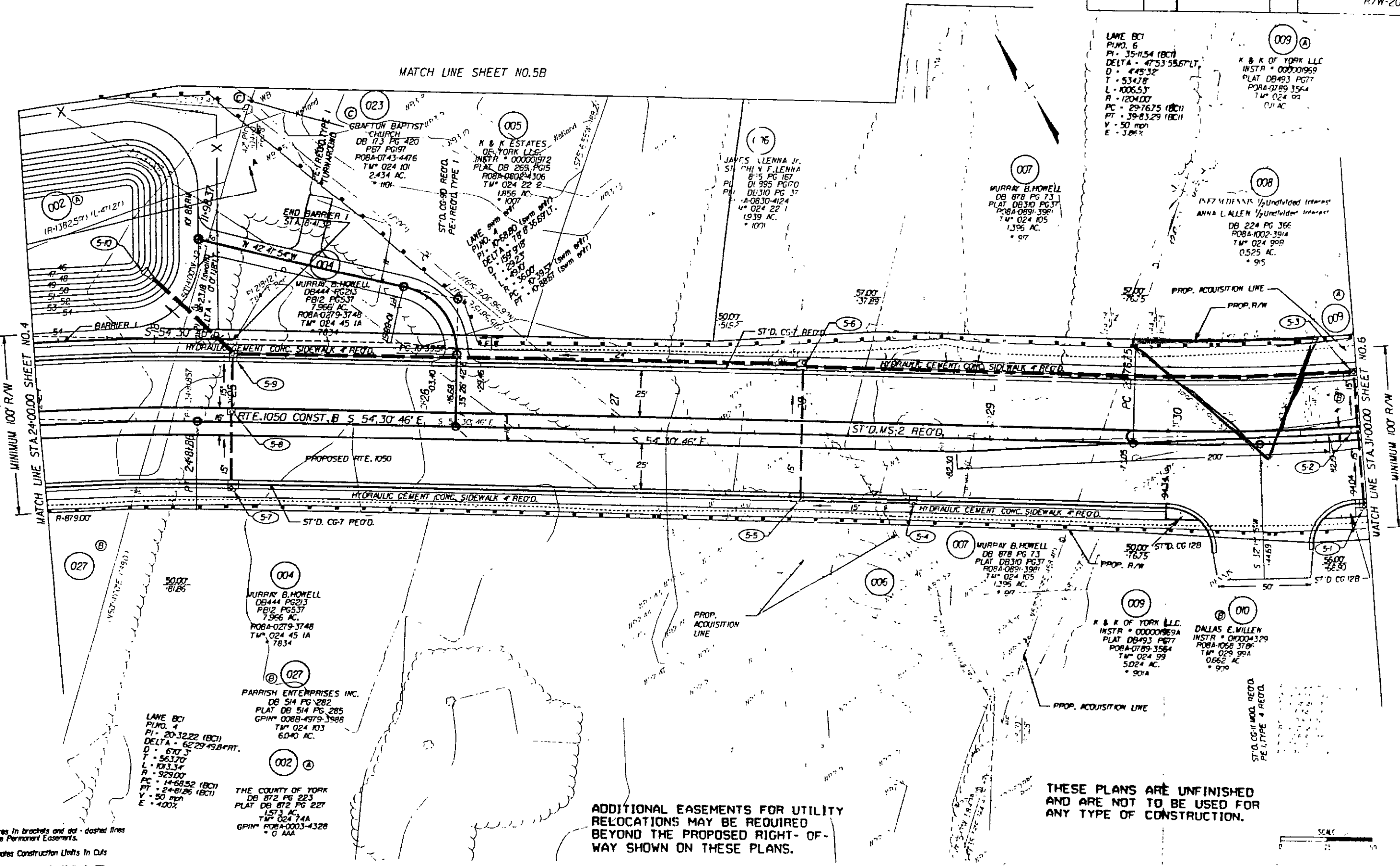


SURVEYED BY: ROBERT Q. BARNUM
 SUPERVISED BY: SONJA HALLUMS-PONTON (757) 925-2550
 DESIGNED BY: J. DIANE GEORGE (757) 925-3622
 HAMPTON ROADS DISTRICT DESIGN UNIT

DESIGN FEATURES RELATING TO CONSTRUCTION OR TO REGULATION AND CONTROL OF TRAFFIC MAY BE SUBJECT TO CHANGE AS DEEMED NECESSARY BY THE DEPARTMENT

PLAN NO.	STATE	FEDERAL AID PROJECT	ROUTE	PROJECT	SHEET NO.
1050-099-180	VA		1050	1050-099-180, C-501 R/W-201	5

MATCH LINE SHEET NO. 5B



LANE BCI
 PLNO. 6
 PI - 35+11.54 (BCI)
 DELTA - 47° 53' 55.6" LT
 D - 445.32
 T - 534.78
 L - 1006.53
 R - 1204.00
 PC - 29+76.75 (BCI)
 PT - 39+83.29 (BCI)
 V - 50 mph
 E - 3.0%

K & K OF YORK LLC
 INSTR - 000001959
 PLAT DB 493 PG 77
 POBA-0789-3564
 TM 024 02
 1.11 AC

ANNA L ALLEN 1/2 Undivided Interest
 ANNA L ALLEN 1/2 Undivided Interest
 DB 224 PG 366
 POBA-1002-3014
 TM 024 99
 0.525 AC.
 * 95

MURRAY B. HOWELL
 DB 878 PG 73
 PLAT DB 310 PG 37
 POBA-0891-3981
 TM 024 105
 1.395 AC.
 * 97

MURRAY B. HOWELL
 DB 844 PG 213
 PB12 PG 537
 7.966 AC.
 POBA-0279-3748
 TM 024 45 1A
 7834

MURRAY B. HOWELL
 DB 844 PG 213
 PB12 PG 537
 7.966 AC.
 POBA-0279-3748
 TM 024 45 1A
 7834

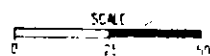
PARRISH ENTERPRISES INC.
 DB 514 PG 282
 PLAT DB 514 PG 285
 GPIN 0088-4979-3988
 TM 024 103
 6.040 AC.

LANE BCI
 PLNO. 4
 PI - 20+32.22 (BCI)
 DELTA - 62° 29' 49.8" RT
 D - 670.3
 T - 563.70
 L - 1013.34
 R - 529.00
 PC - 14+68.52 (BCI)
 PT - 24+81.26 (BCI)
 V - 50 mph
 E - 4.00%

THE COUNTY OF YORK
 DB 872 PG 223
 PLAT DB 872 PG 227
 1.57 AC.
 TM 024 74A
 GPIN POBA-0003-4328
 * 0 AAA

ADDITIONAL EASEMENTS FOR UTILITY RELOCATIONS MAY BE REQUIRED BEYOND THE PROPOSED RIGHT-OF-WAY SHOWN ON THESE PLANS.

THESE PLANS ARE UNFINISHED AND ARE NOT TO BE USED FOR ANY TYPE OF CONSTRUCTION.



Note: Figures in brackets and dot-dashed lines denote Permanent Easements.
 [---] Denotes Construction Units In Cuts
 [---] Denotes Construction Units In Fills
 WFF - SEE GENERAL NOTES FOR E&S LEGEND

PLAN NO.	PROJECT	PLT NO.	SHEET NO.
1050-099-180			5