

**SUBDIVISION PLAT  
CREEKSIDE LANDING  
SECTION FOUR**

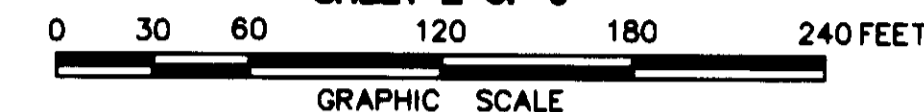
BRUTON DISTRICT - COUNTY OF YORK, VIRGINIA

SCALE: 1" = 60' MAY 3, 2004

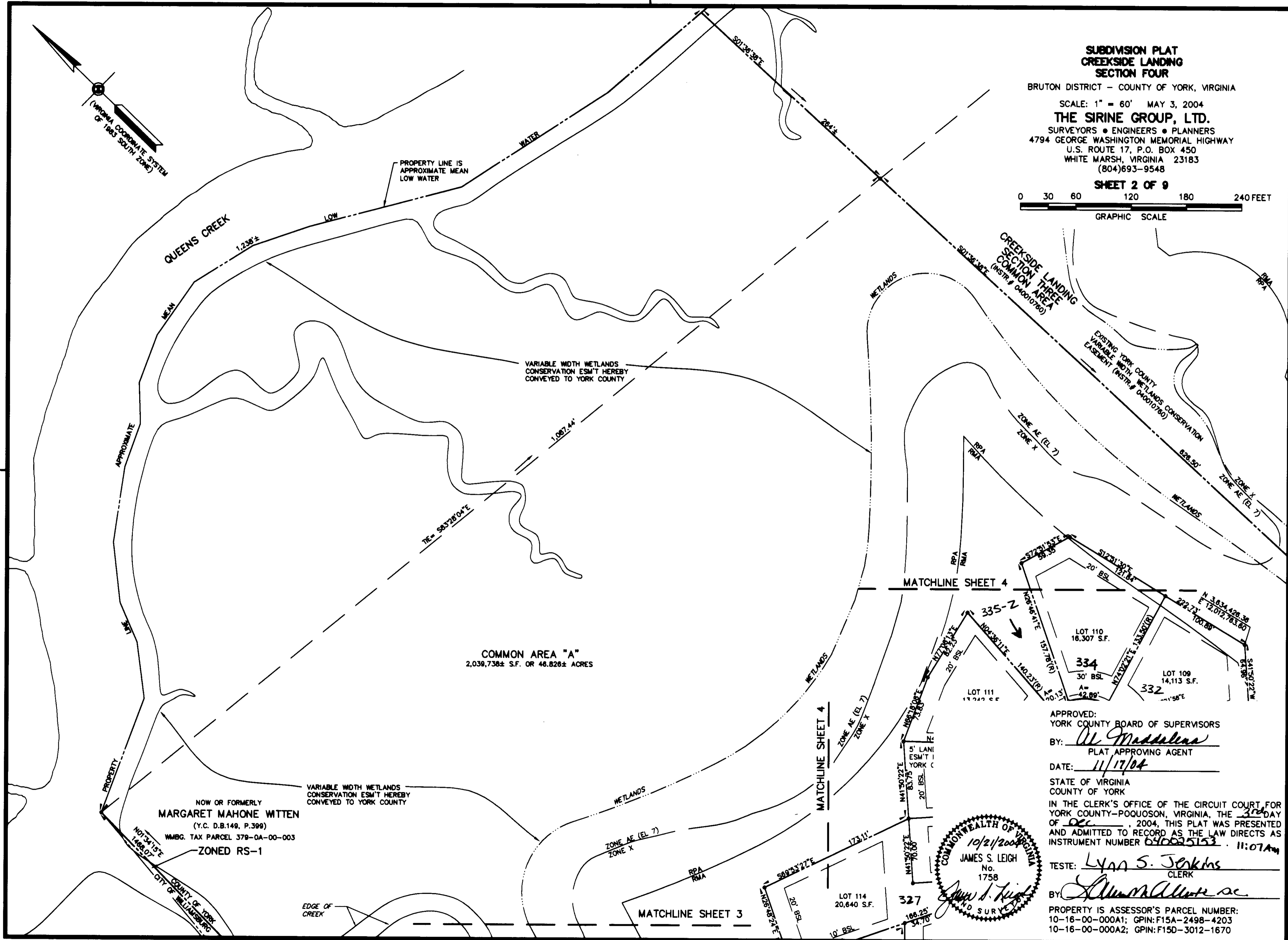
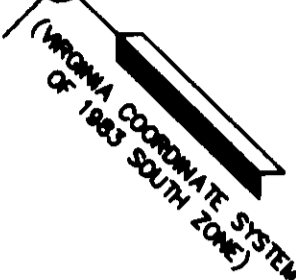
**THE SIRINE GROUP, LTD.**

SURVEYORS • ENGINEERS • PLANNERS  
4794 GEORGE WASHINGTON MEMORIAL HIGHWAY  
U.S. ROUTE 17, P.O. BOX 450  
WHITE MARSH, VIRGINIA 23183  
(804)693-9548

**SHEET 2 OF 9**



GRAPHIC SCALE



PROPERTY LINE IS APPROXIMATE MEAN LOW WATER

VARIABLE WIDTH WETLANDS CONSERVATION ESM'T HEREBY CONVEYED TO YORK COUNTY

**COMMON AREA "A"**  
2,039,738± S.F. OR 46.826± ACRES

VARIABLE WIDTH WETLANDS CONSERVATION ESM'T HEREBY CONVEYED TO YORK COUNTY

NOW OR FORMERLY  
**MARGARET MAHONE WITTEN**  
(Y.C. D.B.149, P.399)  
WMBG. TAX PARCEL 379-0A-00-003  
**ZONED RS-1**

APPROVED:  
YORK COUNTY BOARD OF SUPERVISORS

BY: *Al Maddalena*  
PLAT APPROVING AGENT

DATE: 11/17/04

STATE OF VIRGINIA  
COUNTY OF YORK

IN THE CLERK'S OFFICE OF THE CIRCUIT COURT FOR YORK COUNTY-POQUOSON, VIRGINIA, THE 3rd DAY OF Dec, 2004, THIS PLAT WAS PRESENTED AND ADMITTED TO RECORD AS THE LAW DIRECTS AS INSTRUMENT NUMBER 040025153 11:07 AM

TESTE: *Lynn S. Jenkins*  
CLERK

BY: *Al Maddalena*

PROPERTY IS ASSessor'S PARCEL NUMBER:  
10-16-00-000A1; GPIN: F15A-2498-4203  
10-16-00-000A2; GPIN: F15D-3012-1670

