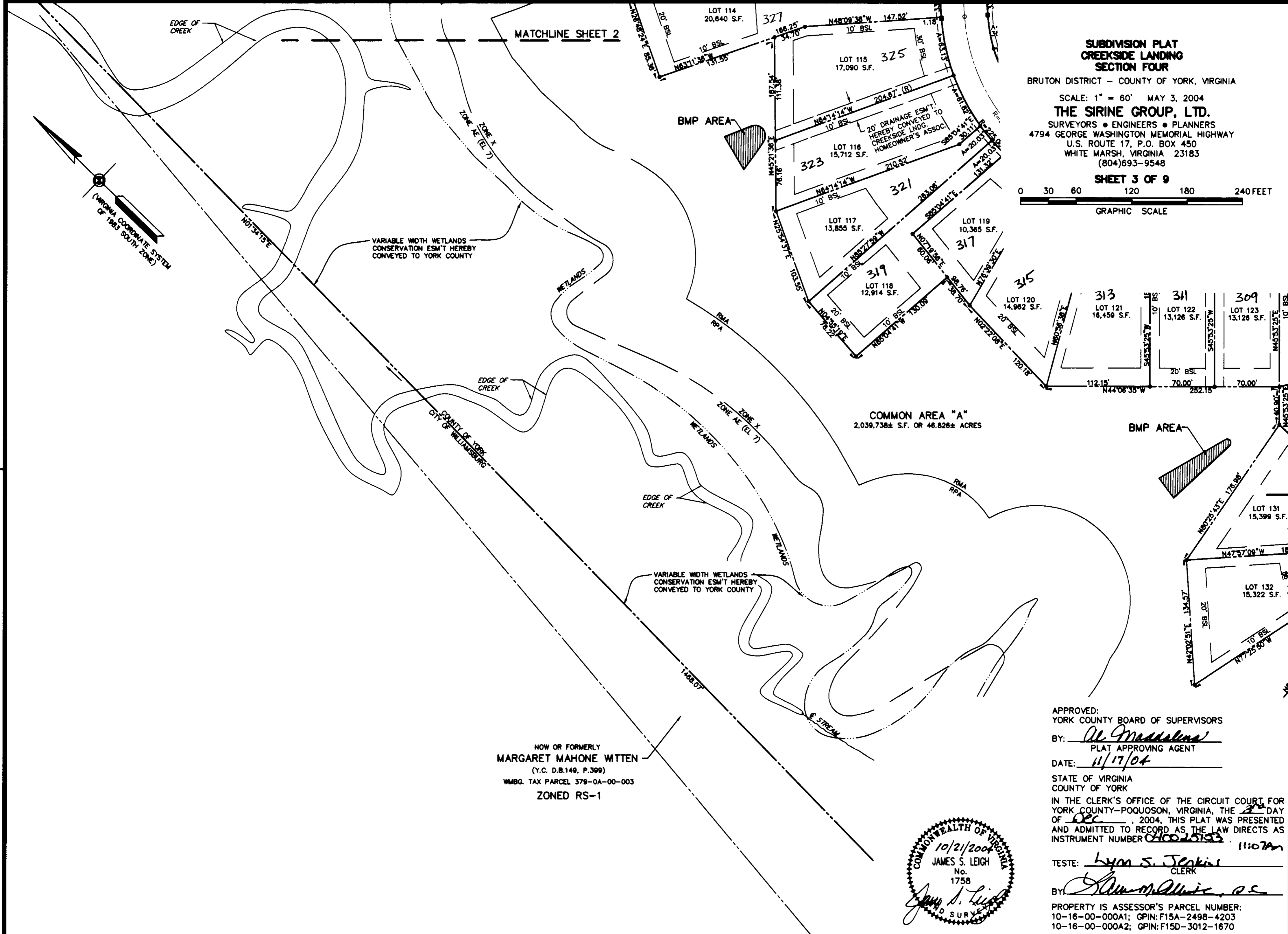


MATCHLINE SHEET 2

**SUBDIVISION PLAT
CREEKSIDE LANDING
SECTION FOUR**
BRUTON DISTRICT - COUNTY OF YORK, VIRGINIA
SCALE: 1" = 60' MAY 3, 2004
THE SIRINE GROUP, LTD.
SURVEYORS • ENGINEERS • PLANNERS
4794 GEORGE WASHINGTON MEMORIAL HIGHWAY
U.S. ROUTE 17, P.O. BOX 450
WHITE MARSH, VIRGINIA 23183
(804)693-9548
SHEET 3 OF 9
0 30 60 120 180 240 FEET
GRAPHIC SCALE



NOW OR FORMERLY
MARGARET MAHONE WITTEN
(Y.C. D.B.149, P.399)
WMBG. TAX PARCEL 379-0A-00-003
ZONED RS-1

APPROVED:
YORK COUNTY BOARD OF SUPERVISORS
BY: Al Maddalena
PLAT APPROVING AGENT
DATE: 11/17/04
STATE OF VIRGINIA
COUNTY OF YORK
IN THE CLERK'S OFFICE OF THE CIRCUIT COURT FOR
YORK COUNTY-POQUOSON, VIRGINIA, THE 22 DAY
OF Dec, 2004, THIS PLAT WAS PRESENTED
AND ADMITTED TO RECORD AS THE LAW DIRECTS AS
INSTRUMENT NUMBER 010025193 11:07AM
TESTE: Lynn S. Jenkins
CLERK
BY: Al Maddalena, P.E.
PROPERTY IS ASSESSOR'S PARCEL NUMBER:
10-16-00-000A1; GPIN: F15A-2498-4203
10-16-00-000A2; GPIN: F15D-3012-1670

