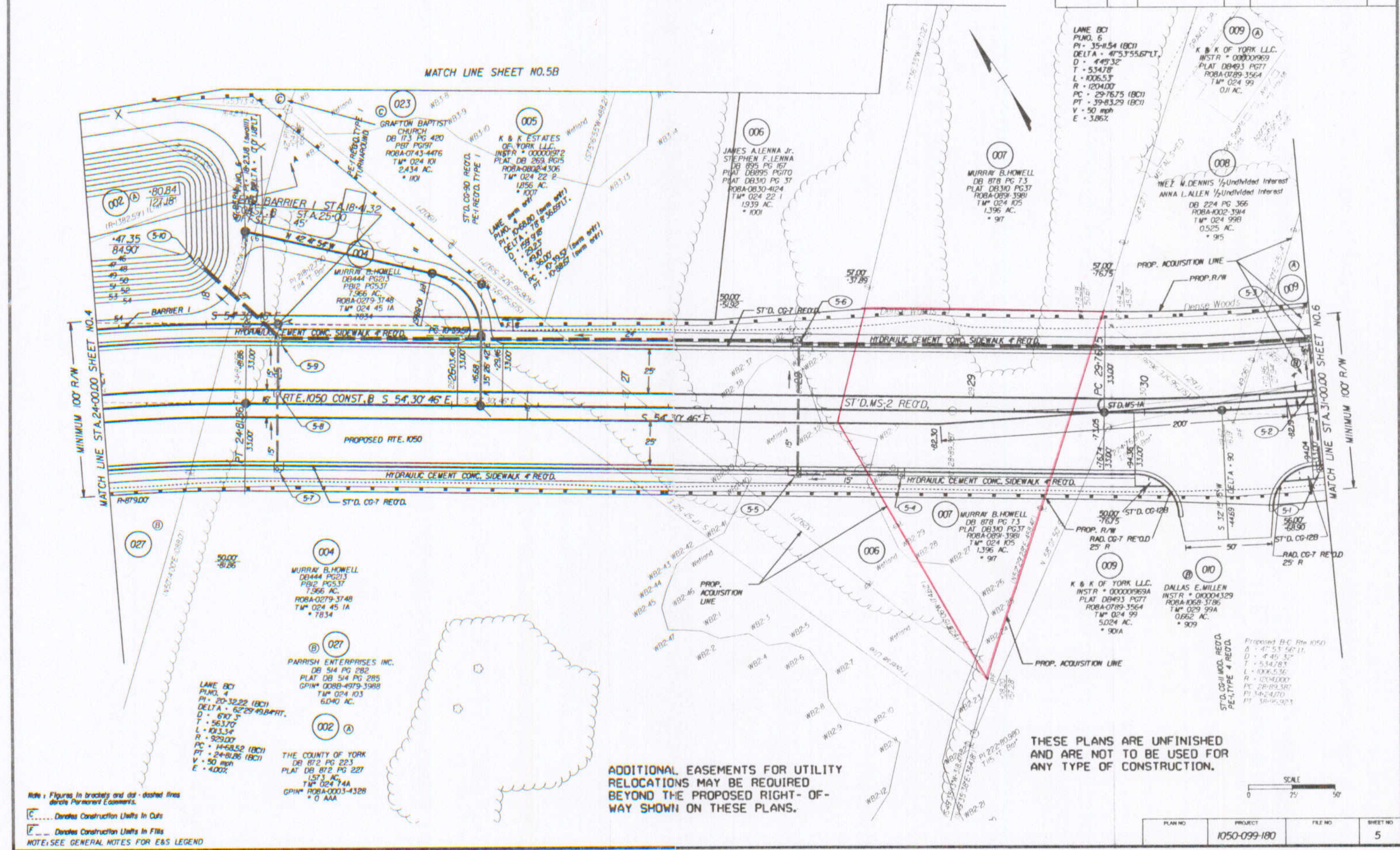


Design File: c:\documents of ms_jacovici\4627\4627\46271005.dgn Ref. File: c:\documents of ms_jacovici\4627\4627\46271005.dgn Levels On: 1-50,52-63
 Ref. File: c:\documents of ms_jacovici\4627\4627\46271005.dgn Levels On: 1-63
 Ref. File: c:\documents of ms_jacovici\4627\4627\46271005.dgn Levels On: 1-63
 Ref. File: c:\documents of ms_jacovici\4627\4627\46271005.dgn Levels On: 1-63
 Ref. File: c:\documents of ms_jacovici\4627\4627\46271005.dgn Levels On: 1-63

SURVEYED BY: NBERG, CHAPMAN
 SUPERVISED BY: SONYA HALLUMS-PONTON (757) 925-2580
 DESIGNED BY: J. DAME, GEDRUE, (757) 925-3622
 HAMPTON ROADS DISTRICT DESIGN UNIT

DESIGN FEATURES RELATING TO CONSTRUCTION OR TO REGULATION AND CONTROL OF TRAFFIC MAY BE SUBJECT TO CHANGE AS DEEMED NECESSARY BY THE DEPARTMENT

REVISED	STATE	FEDERAL AID	ROUTE	PROJECT	SHEET NO.
10-14-04 10-18-04 10-22-04	VA		1050	1050-099-180, C-501 R/W-201	5



LANE BC1
 PLNO. 6
 PI - 35+15.54 (BC1)
 DELTA - 47°53'55.67"LT.
 D - 445.32'
 T - 534.78'
 L - 1006.53'
 R - 1204.00'
 PC - 29+76.75 (BC1)
 PT - 39+83.29 (BC1)
 V - 50 mph
 E - 3.86%

009 (A)
 K & K OF YORK LLC
 INSTR # 00000969
 PLAT DB 493 PG 77
 ROBA-0789-3564
 TM# 024 99
 0.1 AC.

008
 WEEZ M. DENNIS 1/2 Undivided Interest
 ANNA L. ALLEN 1/2 Undivided Interest
 DB 224 PG 366
 ROBA-1002-3914
 TM# 024 99B
 0.525 AC.
 * 915

007
 MURRAY B. HOWELL
 DB 878 PG 73
 PLAT DB 830 PG 37
 ROBA-0891-3981
 TM# 024 105
 1.396 AC.
 * 917

009
 K & K OF YORK LLC
 INSTR # 00000969
 PLAT DB 493 PG 77
 ROBA-0789-3564
 TM# 024 99
 5.024 AC.
 * 901A

010
 DALLAS E. MILLEN
 INSTR # 000004329
 ROBA-1068-3786
 TM# 029 99A
 0.662 AC.
 * 909

ADDITIONAL EASEMENTS FOR UTILITY RELOCATIONS MAY BE REQUIRED BEYOND THE PROPOSED RIGHT-OF-WAY SHOWN ON THESE PLANS.

THESE PLANS ARE UNFINISHED AND ARE NOT TO BE USED FOR ANY TYPE OF CONSTRUCTION.



Note: Figures in brackets and dot-dashed lines denote Permanent Easements.
 [---] Denotes Construction Units In Cuts
 [---] Denotes Construction Units In Fills
 NOTE: SEE GENERAL NOTES FOR E&S LEGEND

PLAN NO.	PROJECT	FILE NO.	SHEET NO.
	1050-099-180		5