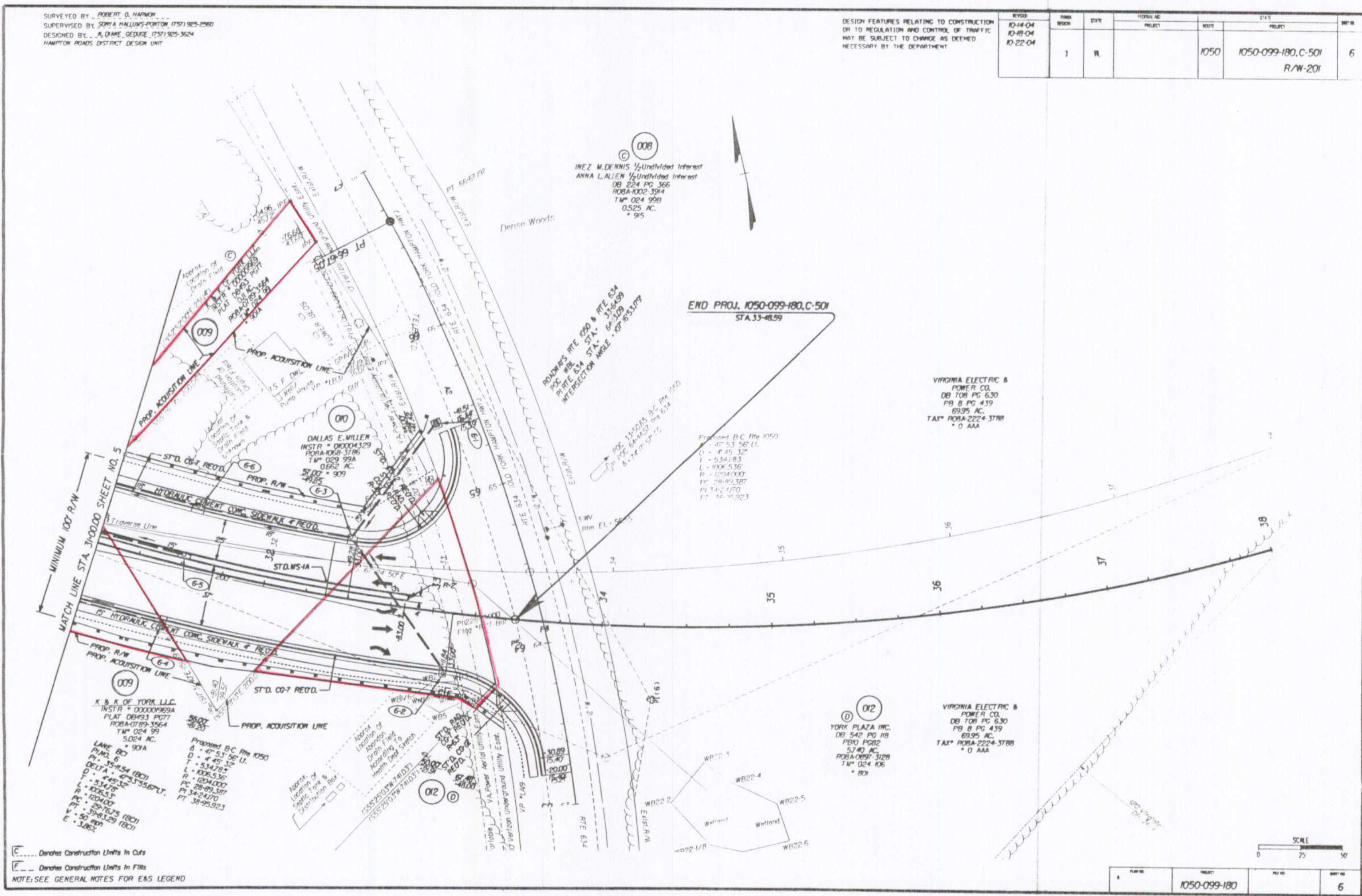


Design File - c:\documents of ms_jacobson\4627\4627\4627005.dwg File - c:\documents of ms_jacobson\4627\4627\4627.dwg File - c:\documents of ms_jacobson\4627\4627\4627.dwg File - c:\documents of ms_jacobson\4627\4627\4627.dwg File - c:\documents of ms_jacobson\4627\4627\4627.dwg File - c:\documents of ms_jacobson\4627\4627\4627.dwg File - c:\documents of ms_jacobson\4627\4627\4627.dwg File - c:\documents of ms_jacobson\4627\4627\4627.dwg
 Design levels on - F50.52-63 Levels On - F50.52-63 Levels On - F63 Levels On - F63 Levels On - F63 Levels On - F63 Levels On - F63 Levels On - F63

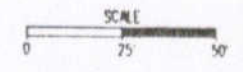
SURVEYED BY: ROBERT D. HARMON
 SUPERVISED BY: SORVA HALLUMS-PORTON (757) 925-2900
 DESIGNED BY: J. DRAKE GEDURE (757) 925-3624
 HAMPTON ROADS DISTRICT DESIGN UNIT

DESIGN FEATURES RELATING TO CONSTRUCTION OR TO REGULATION AND CONTROL OF TRAFFIC MAY BE SUBJECT TO CHANGE AS DEEMED NECESSARY BY THE DEPARTMENT.

REVISED	PLAN NUMBER	STATE	FEDERAL AID PROJECT	ROUTE	STATE PROJECT	SHEET NO.
10-14-04 10-19-04 10-22-04	1	VA		1050	1050-099-180.C-501 R/W-201	6



Denotes Construction Units In Cuts
 Denotes Construction Units In Fills
 NOTE: SEE GENERAL NOTES FOR E&S LEGEND



PLAN NO.	PROJECT	PLAN NO.	SHEET NO.
1	1050-099-180		6