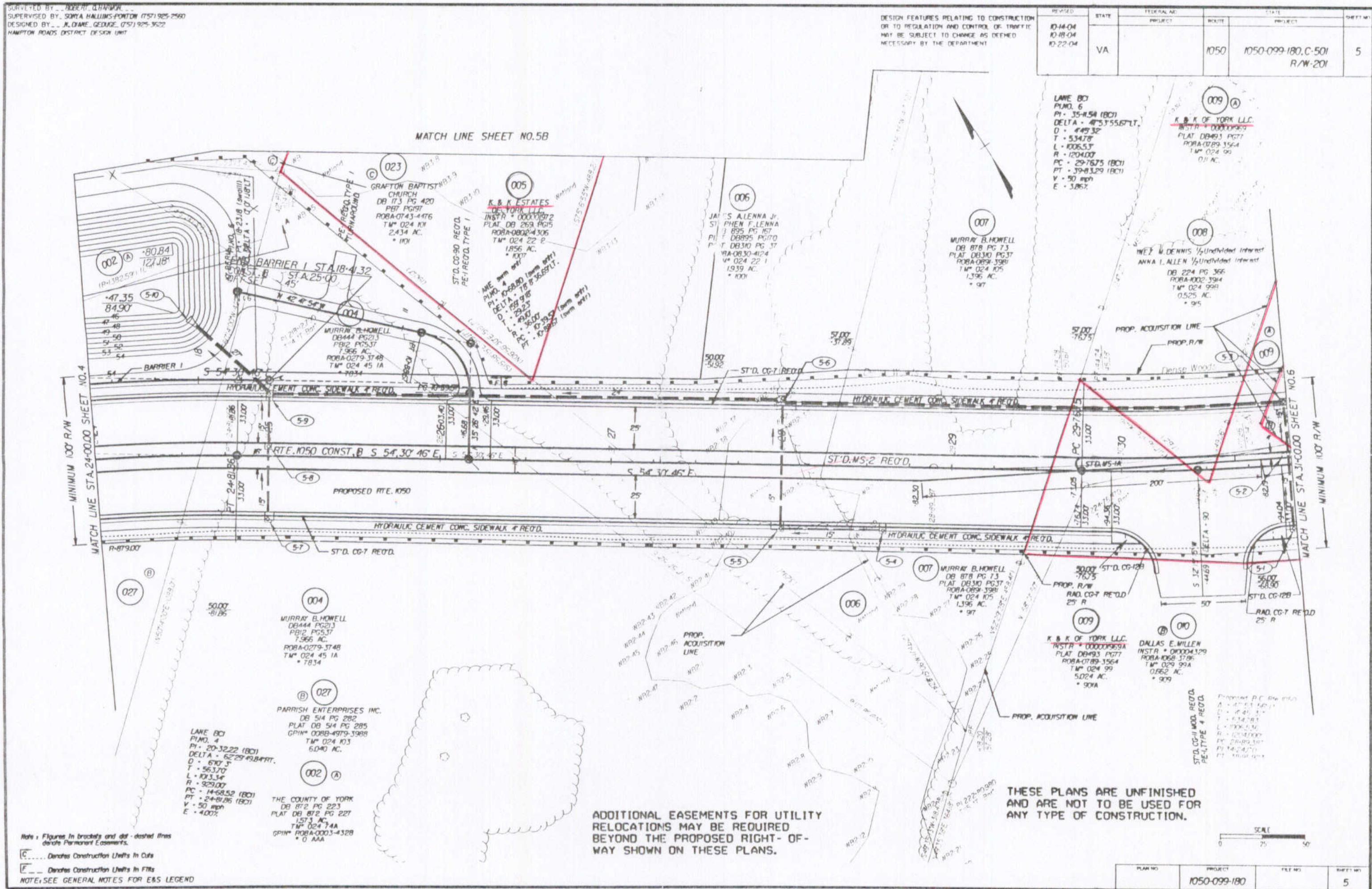


Design File: c:\documents of ms_jacob\ref\4627\4627005.dgn Ref File: c:\documents of ms_jacob\ref\4627.dgn Levels On: 1-50,52-53
 Ref File: c:\documents of ms_jacob\ref\4627.dgn Levels On: 1-63
 Ref File: c:\documents of ms_jacob\ref\4627.dgn Levels On: 1-63
 Ref File: c:\documents of ms_jacob\ref\4627.dgn Levels On: 1-63
 Ref File: c:\documents of ms_jacob\ref\4627.dgn Levels On: 1-63

SURVEYED BY: ROBERT L. HANNAH
 SUPERVISED BY: SOMYA HALLUMS-FORTON (757) 925-2590
 DESIGNED BY: J. DIANE GEDJIGE (757) 925-3522
 HAMPTON ROADS DISTRICT DESIGN UNIT

DESIGN FEATURES RELATING TO CONSTRUCTION OR TO REGULATION AND CONTROL OF TRAFFIC MAY BE SUBJECT TO CHANGE AS DEEMED NECESSARY BY THE DEPARTMENT

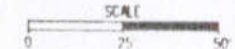
REVISED	STATE	FEDERAL AC PROJECT	ROUTE	STATE PROJECT	SHEET NO.
10-14-04 10-18-04 10-22-04	VA		1050	1050-099-180.C-501 R/W-201	5



Note: Figures in brackets and dot-dashed lines denote Permanent Easements.
 [C]..... Denotes Construction Limits In Cuts
 [E]..... Denotes Construction Limits In Fills
 NOTE: SEE GENERAL NOTES FOR E&S LEGEND

ADDITIONAL EASEMENTS FOR UTILITY RELOCATIONS MAY BE REQUIRED BEYOND THE PROPOSED RIGHT-OF-WAY SHOWN ON THESE PLANS.

THESE PLANS ARE UNFINISHED AND ARE NOT TO BE USED FOR ANY TYPE OF CONSTRUCTION.



PLAN NO.	PROJECT	FILE NO.	SHEET NO.
	1050-099-180		5

01/26/2004 08:40:02