

Design File - c:\documents of ms_joan\4627\4627\4627005.dgn
 Design Levels on - 150.5, ROBERT O. HARMON

Ref. File - c:\documents of ms_joan\4627\4627\4627.dgn
 Levels On - 150.52-63

Ref. File - c:\documents of ms_joan\ref\4627\4627004.dgn
 Levels On - 150.52-63

Ref. File - c:\documents of ms_joan\4627\4627\4627005.dgn
 Levels On - 163

Ref. File - c:\documents of ms_joan\4627\4627\4627.dgn
 Levels On - 163

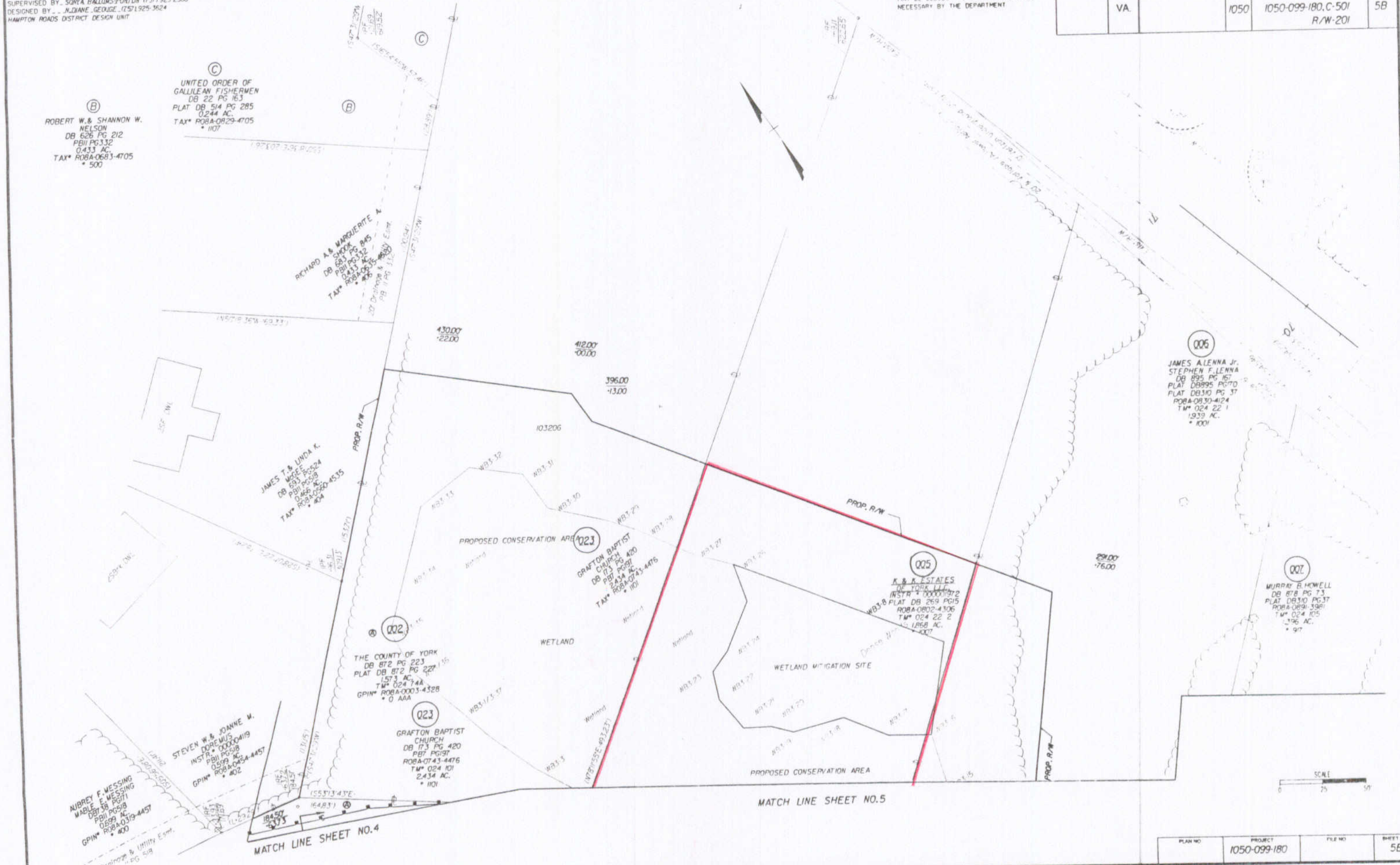
Ref. File - c:\documents of ms_joan\4627\4627\4627.dgn
 Levels On - 163

Ref. File - c:\documents of ms_joan\4627\4627\4627.dgn
 Levels On - 163

SURVEYED BY - ROBERT O. HARMON
 SUPERVISED BY - SONYA HALLUMS-PONTON (757) 925-2560
 DESIGNED BY - JULIANE GEORGE (757) 925-3624
 HAMPTON ROADS DISTRICT DESIGN UNIT

DESIGN FEATURES RELATING TO CONSTRUCTION
 OR TO REGULATION AND CONTROL OF TRAFFIC
 MAY BE SUBJECT TO CHANGE AS DEEMED
 NECESSARY BY THE DEPARTMENT

REVISED	STATE	FEDERAL AID PROJECT	ROUTE	STATE PROJECT	SHEET NO.
	VA.		1050	1050-099-180, C-501 R/W-201	5B



PLAN NO.	PROJECT	FILE NO.	SHEET NO.
	1050-099-180		5B

2004_260133_P11_VHP_SERVER_FILES\PROJECT\4627\4627\4627005.dgn
 01/14/2004 14:04