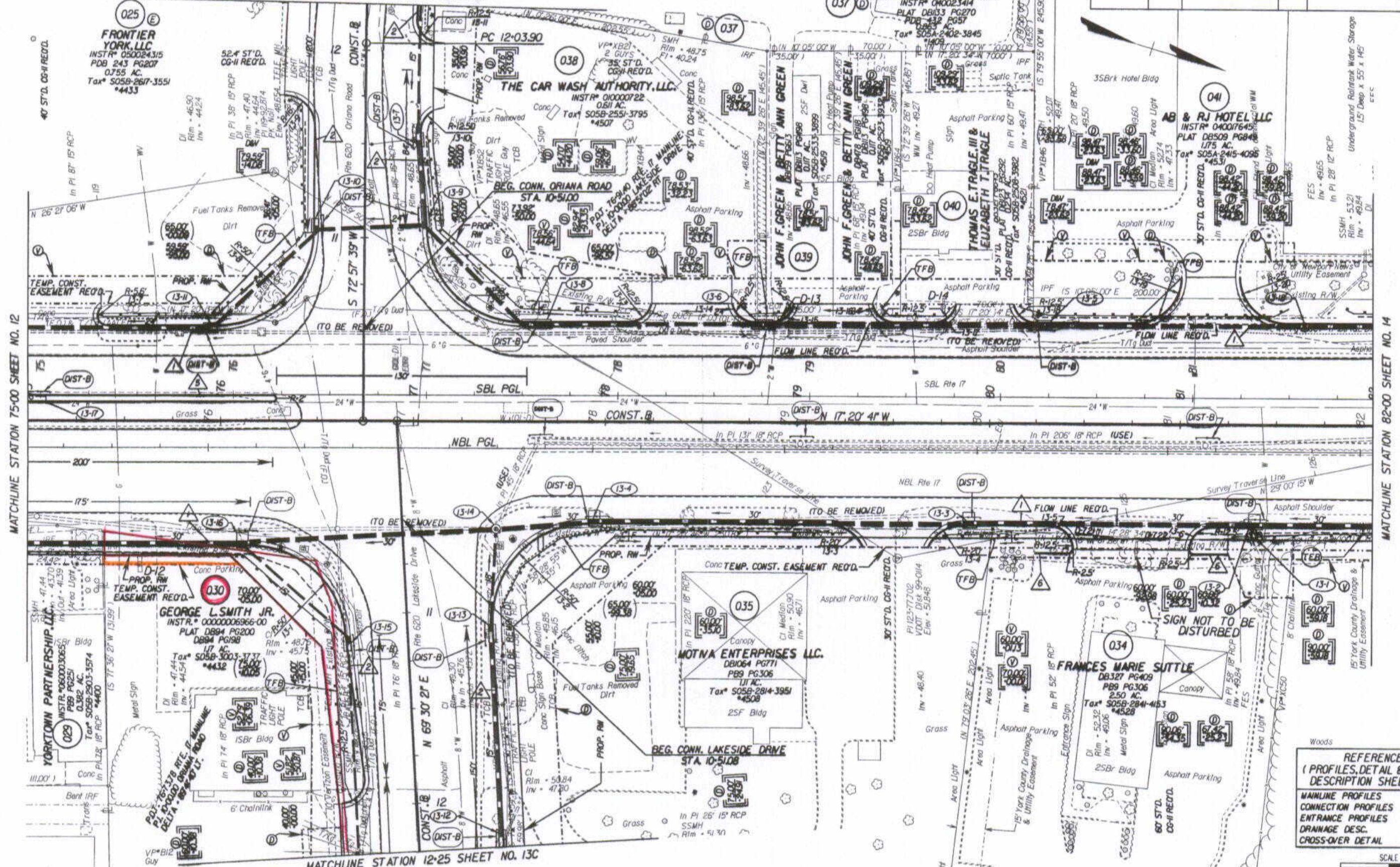


DESIGN FEATURES RELATING TO CONSTRUCTION OR TO REGULATION AND CONTROL OF TRAFFIC MAY BE SUBJECT TO CHANGE AS DEEMED NECESSARY BY THE DEPARTMENT

REVISION	STATE	FEDERAL AID PROJECT	ROUTE	STATE PROJECT	SHEET NO.
12/08/05 02/06/06 03/21/06 06/08/06	VA.		17	6017-099-129, RW-201, C-501	13

THESE PLANS ARE UNFINISHED AND ARE NOT TO BE USED FOR ANY TYPE OF CONSTRUCTION.

MATCHLINE STATION 12+25 SHEET NO. 13B



REFERENCES  
 (PROFILES, DETAIL & DRAINAGE DESCRIPTION SHEETS, ETC.)

MAINLINE PROFILES	13A
CONNECTION PROFILES	13D
ENTRANCE PROFILES	24D, E, I, J
DRAINAGE DESC.	2HII - 2H7I
CROSS-OVER DETAIL	2E



NOTE: PGL DENOTES PROFILE GRADE LINE  
 NOTE: SEE GENERAL NOTES FOR E&S LEGEND  
 DENOTES DRAINAGE STRUCTURE NUMBER

Note: Figures in brackets and dot-dashed lines denote Permanent Easements.  
 Denotes variable easement required for Verizon Virginia  
 Denotes variable easement required for Dominion Virginia Power

Note: Figures in parenthesis and dot-dot-dashed lines denote Temporary Easements.

C... Denotes Construction Limits in Cuts  
 F... Denotes Construction Limits in Fills

1 ST'D. CG-7 REQ'D  
 2 ST'D. CG-6 REQ'D  
 3 ST'D. MS-1A REQ'D  
 4 ST'D. CG-3 REQ'D

PLAN NO.	PROJECT	FILE NO.	SHEET NO.
	6017-099-129		13

State Highway Plat Book No. 10 Page 35 doc. # 070005448