

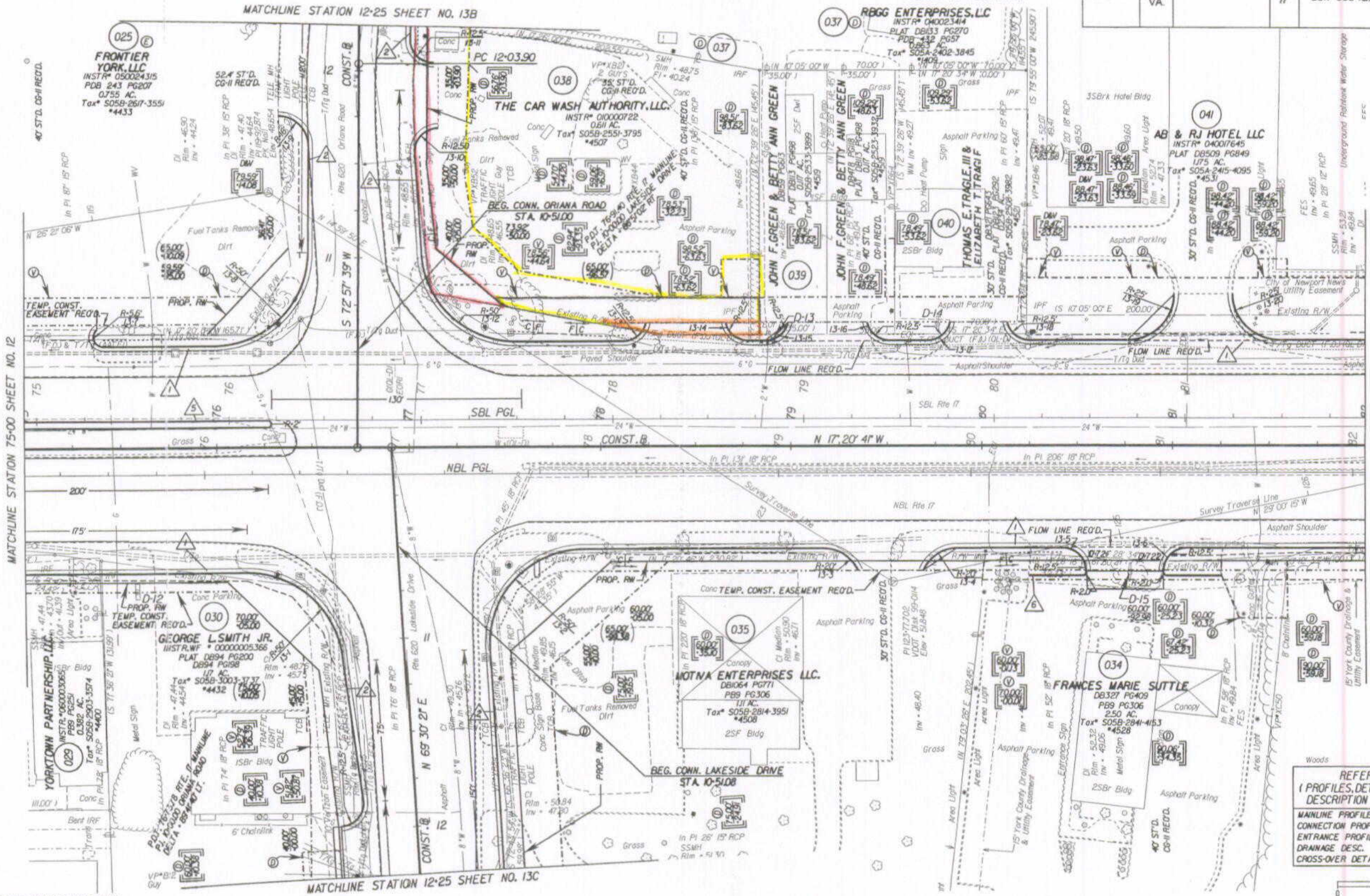
SURVEYED BY: BOB HARMON 12/31/2017
 SUPERVISED BY: PHILIP BURN 12/31/2017
 DESIGNED BY: M. WINSTEA 12/31/2017
 HAMPTON ROADS DISTRICT DESIGN UNIT

PAGE 2

DESIGN FEATURES RELATING TO CONSTRUCTION OR TO REGULATION AND CONTROL OF TRAFFIC MAY BE SUBJECT TO CHANGE AS DEEMED NECESSARY BY THE DEPARTMENT

REVISION	STATE	FEDERAL AID PROJECT	ROUTE	STATE PROJECT	SHEET NO.
12/09/05	VA.		17	6017-099-129, RW-201, C-501	13
02/06/06					
03/23/06					
06/08/06					

THESE PLANS ARE UNFINISHED AND ARE NOT TO BE USED FOR ANY TYPE OF CONSTRUCTION.



MATCHLINE STATION 75-00 SHEET NO. 12

MATCHLINE STATION 82-00 SHEET NO. 14

State Hwy 10 43 Instr # 0700 5811

REFERENCES
 (PROFILES, DETAIL & DRAINAGE DESCRIPTION SHEETS, ETC.)

MAINLINE PROFILES	13A
CONNECTION PROFILES	13D
ENTRANCE PROFILES	24D, E, I, J
DRAINAGE DESC.	2H(1) - 2H(7)
CROSS-OVER DETAIL	2E



NOTE: PGL DENOTES PROFILE GRADE LINE
 NOTE: SEE GENERAL NOTES FOR E&S LEGEND
 (C) DENOTES DRAINAGE STRUCTURE NUMBER
 Note: Figures in brackets and dot-dashed lines denote Permanent Easements.
 (V) Denotes variable easement required for Verizon Virginia
 (P) Denotes variable easement required for Dominion Virginia Power

Note: Figures in parenthesis and dot-dashed lines denote Temporary Easements.
 (C) Denotes Construction Limits In Cuts
 (F) Denotes Construction Limits In Fills
 (1) ST'D. CG-7 REO'D.
 (2) ST'D. CG-6 REO'D.
 (5) ST'D. MS-1A REO'D.
 (6) ST'D. CG-3 REO'D.

PLAN NO.	PROJECT	FILE NO.	SHEET NO.
	6017-099-129		13