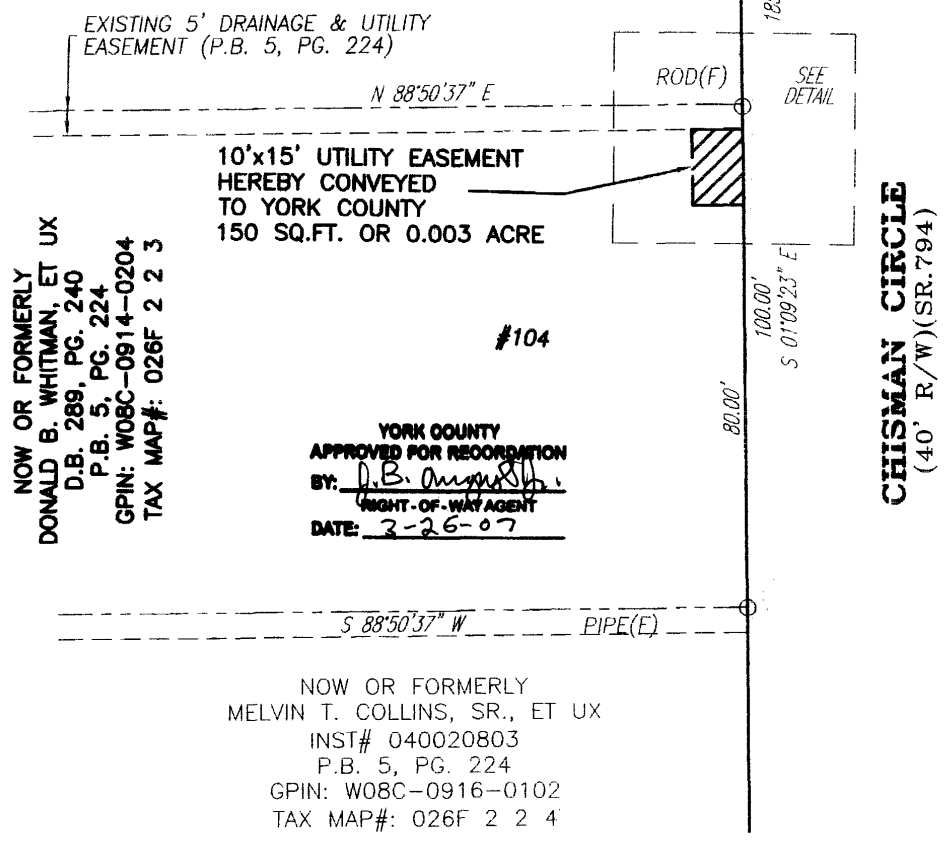


NOW OR FORMERLY
 BRIAN LINDSAY WROTEN
 & NANCY L. WROTEN
 INST # 060016922
 P.B. 5, PG. 224
 GPIN: W08C-0914-0303
 TAX MAP#: 026F 2 2 2



NOW OR FORMERLY
 DONALD B. WHITMAN, ET UX
 D.B. 289, PG. 240
 P.B. 5, PG. 224
 GPIN: W08C-0914-0204
 TAX MAP#: 026F 2 2 3

YORK COUNTY
 APPROVED FOR RECORDATION
 BY: D.B. [Signature]
 RIGHT-OF-WAY AGENT
 DATE: 3-26-07

NOW OR FORMERLY
 MELVIN T. COLLINS, SR., ET UX
 INST # 040020803
 P.B. 5, PG. 224
 GPIN: W08C-0916-0102
 TAX MAP#: 026F 2 2 4

CHISMAN CIRCLE
 (40' R/W)(SR.794)

- NOTES:
1. THIS PLAT IS INTENDED FOR A DESCRIPTION OF UTILITY EASEMENT ONLY, AND DOES NOT CONSTITUTE A BOUNDARY SURVEY.
 2. THIS SURVEY WAS PERFORMED WITHOUT THE BENEFIT OF A TITLE REPORT, AND MAY NOT REFLECT ALL EASEMENTS OR RESTRICTIONS THAT MAY AFFECT THE PROPERTY.

	REFERENCES: D.B. 289, PG. 240 P.B. 5, PG. 224	PLAT OF UTILITY EASEMENT ACQUISITION FROM: DONALD B. WHITMAN, ET UX TO: COUNTY OF YORK, VIRGINIA PROJECT: YORK POINT SEWER PROJECT	
	MERIDIAN IS BASED ON: VIRGINIA STATE PLANE COORDINATE SYSTEM, SOUTH ZONE, NAD 83 U.S. SURVEY FEET	DATE: 9/26/06	SCALE: 1" = 30'
		PRECISION MEASUREMENTS, INC. SURVEYORS • GPS • 3-D SCANNING • MAPPERS 813 DILIGENCE DRIVE, SUITE 119 NEWPORT NEWS, VIRGINIA 23606 (757) 595-757C	