

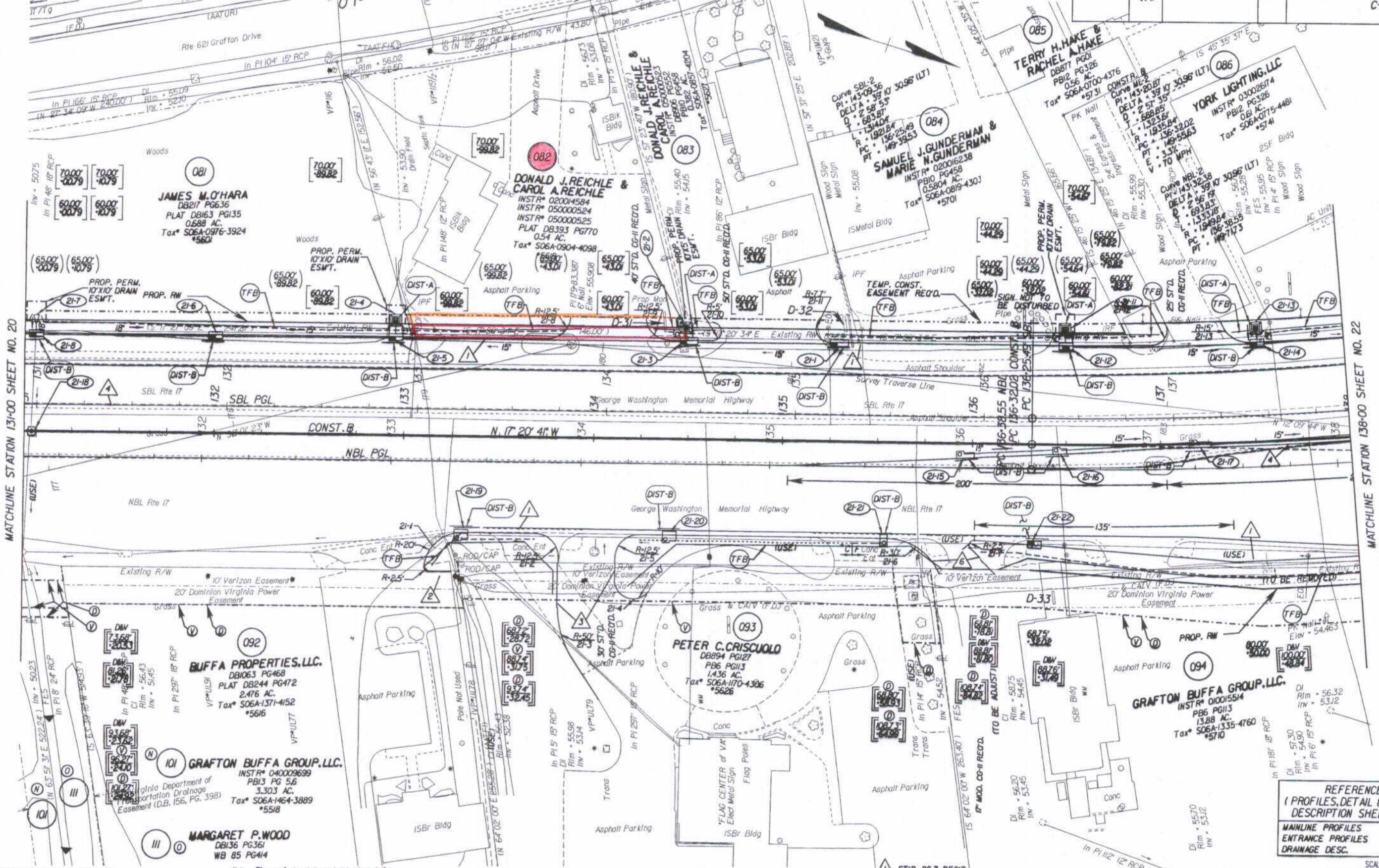
SURVEYED BY: BOB HARMON 05/12/53-537
 SUPERVISED BY: PAUL BYNUM 07/22/52-2537
 DESIGNED BY: M.D. WINSTEAD 07/22/52-2556
 HAMPTON ROADS DISTRICT DESIGN UNIT

Instr# 070011015 State Highway 65
 Plat Book No. 10 Page 65

DESIGN FEATURES RELATING TO CONSTRUCTION OR TO REGULATION AND CONTROL OF TRAFFIC MAY BE SUBJECT TO CHANGE AS DEEMED NECESSARY BY THE DEPARTMENT

REVISED	STATE	FEDERAL AID PROJECT	ROUTE	STATE PROJECT	SHEET NO.
03/23/06	VA.		17	6017-099-129, RW-201, C-501	21

THESE PLANS ARE UNFINISHED AND ARE NOT TO BE USED FOR ANY TYPE OF CONSTRUCTION.



MATCHLINE STATION 131+00 SHEET NO. 20

MATCHLINE STATION 138+00 SHEET NO. 22

NOTE: PGL DENOTES PROFILE GRADE LINE
 NOTE: SEE GENERAL NOTES FOR E&S LEGEND
 ○ DENOTES DRAINAGE STRUCTURE NUMBER

Note: Figures in brackets and dot-dashed lines denote Permanent Easements.
 V Denotes variable easement required for Verizon Virginia
 D Denotes variable easement required for Dominion Virginia Power

Note: Figures in parenthesis and dot-dashed lines denote Temporary Easements.
 C Denotes Construction Limits In Cuts
 F Denotes Construction Limits In Fills

1 ST'D. CG-7 RE'CD.
 2 ST'D. CG-6 RE'CD.
 3 ST'D. CG-2 RE'CD.
 4 ST'D. MS-2 RE'CD.
 6 ST'D. CG-3 RE'CD.

REFERENCES
 (PROFILES, DETAIL & DRAINAGE DESCRIPTION SHEETS, ETC.)

MAINLINE PROFILES	21A
ENTRANCE PROFILES	24H
DRAINAGE DESC.	2H11 - 2H71



PLAN NO.	PROJECT	FILE NO.	SHEET NO.
	6017-099-129		21

3/22/2007