

DESIGNED BY: J. B. HARRIS (1752) 253-5337  
 REVISED BY: P. J. BYRUM (1752) 925-2557  
 DRAWN BY: M. J. WILSTEAD (1752) 925-2556  
 TOWN ROADS DISTRICT DESIGN UNIT

Instn# 070011835 State Highway 10  
 Plat Book No. Page 90

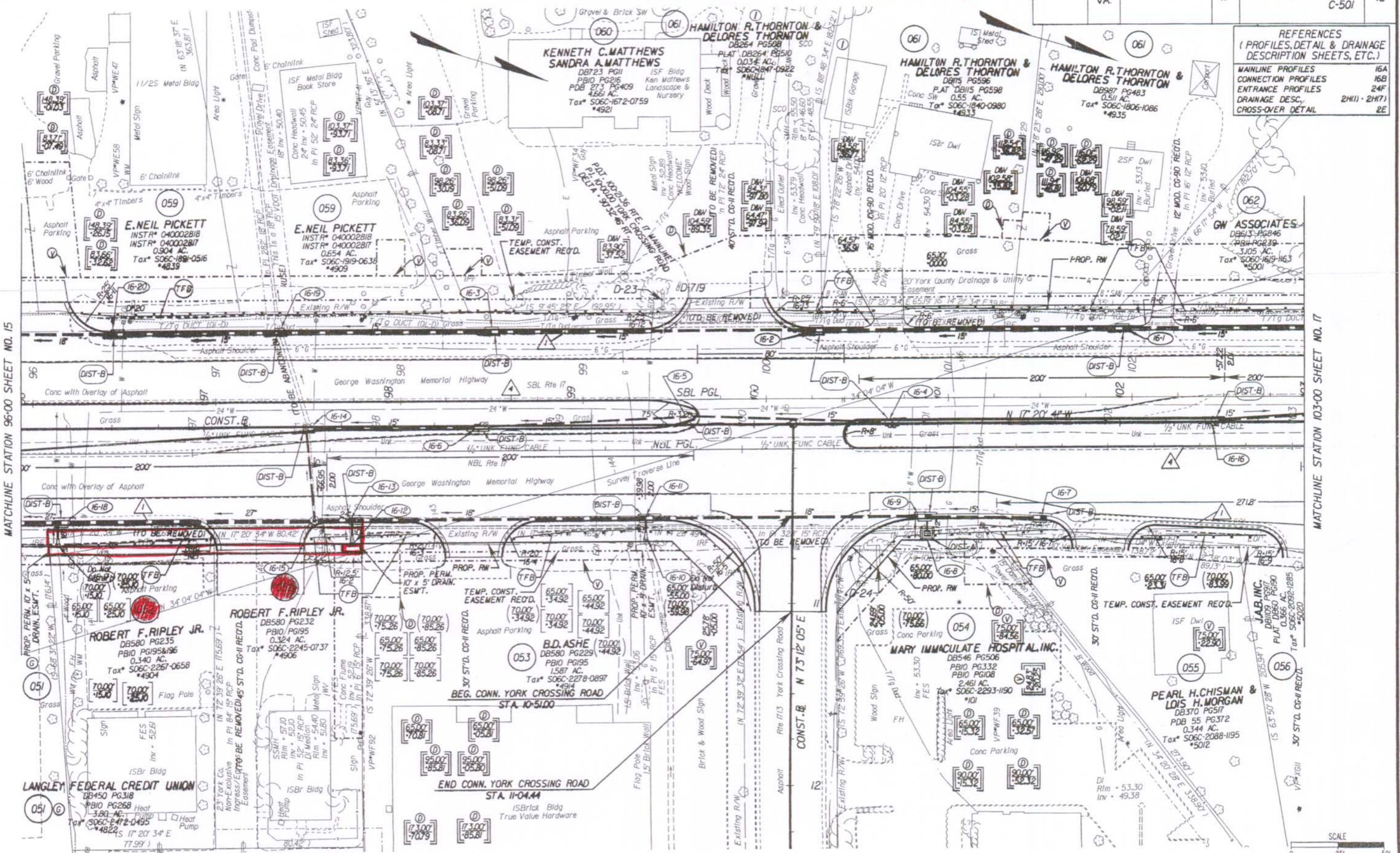
DESIGN FEATURES RELATING TO CONSTRUCTION OR TO REGULATION AND CONTROL OF TRAFFIC MAY BE SUBJECT TO CHANGE AS DEEMED NECESSARY BY THE DEPARTMENT

REVISED	FEDERAL AID	ROUTE	STATE PROJECT	SHEET NO.
12/09/05 02/06/06		17	6017-099-129, RW-201, C-501	16

REFERENCES  
 (PROFILES, DETAIL & DRAINAGE DESCRIPTION SHEETS, ETC.)

MAINLINE PROFILES	16A
CONNECTION PROFILES	16B
ENTRANCE PROFILES	24F
DRAINAGE DESC.	2H11 - 2H71
CROSS-OVER DETAIL	2E

THESE PLANS ARE UNFINISHED AND ARE NOT TO BE USED FOR ANY TYPE OF CONSTRUCTION.



PGL DENOTES PROFILE GRADE LINE  
 SEE GENERAL NOTES FOR E&S LEGEND  
 ) DENOTES DRAINAGE STRUCTURE NUMBER

Note: Figures in brackets and dot - dashed lines denote Permanent Easements.  
 (V) Denotes variable easement required for Verizon Virginia  
 (D) Denotes variable easement required for Dominion Virginia Power  
 Note: Figures in parenthesis and dot - dot - dashed lines denote Temporary Easements.

(C) Denotes Construction Units in Cuts  
 (E) Denotes Construction Units in Fills  
 (I) ST'D. CG-7 RECD.  
 (A) ST'D. MS-2 RECD.



PLAN NO.	PROJECT	FILE NO.	SHEET NO.
	6017-099-129		16

MATCHLINE STATION 96+00 SHEET NO. 15

MATCHLINE STATION 103+00 SHEET NO. 17