

PLAT OF EASEMENTS
 PARCELS B-3A, B-3B, B-3C, B-3D AND B-3E
 "SUBDIVISION OF THE PROPERTY
 OF BULIFANTS, L.P.
 PARCEL B-3 AND BMP NO. 3"
 INSTRUMENT #050025933
 BRUTON MAGISTERIAL DISTRICT
 COUNTY OF YORK, VIRGINIA

DATE: 09/05/06 SHEET 4 OF 10 SCALE: 1"=60'
 PROJECT NO: 31392.01 DRAWN BY: DWP

VHB Vanasse Hangen Brustlin, Inc.
 Transportation Land Development Environmental Services
 11832 Rock Landing Drive, Suite 207
 Newport News, Virginia 23606-4231
 (757) 873-3386 • FAX (757) 873-0757

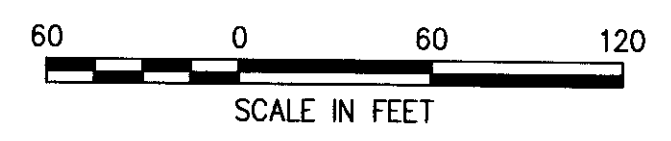
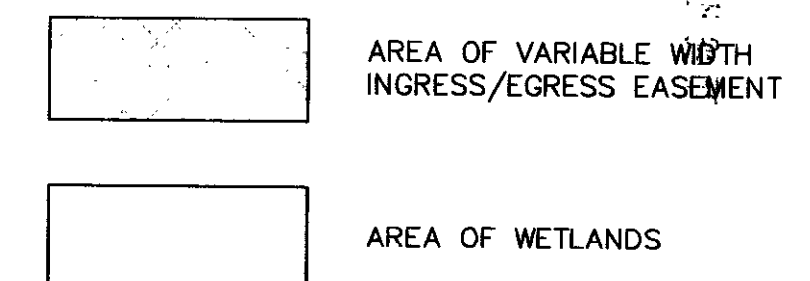
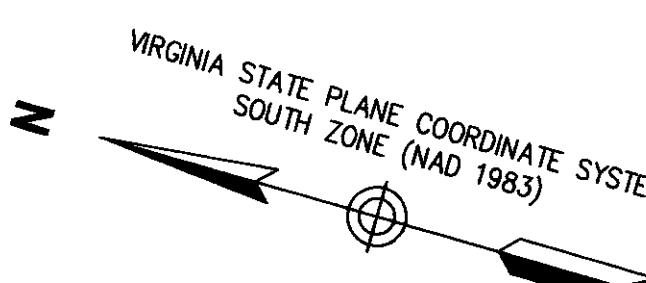
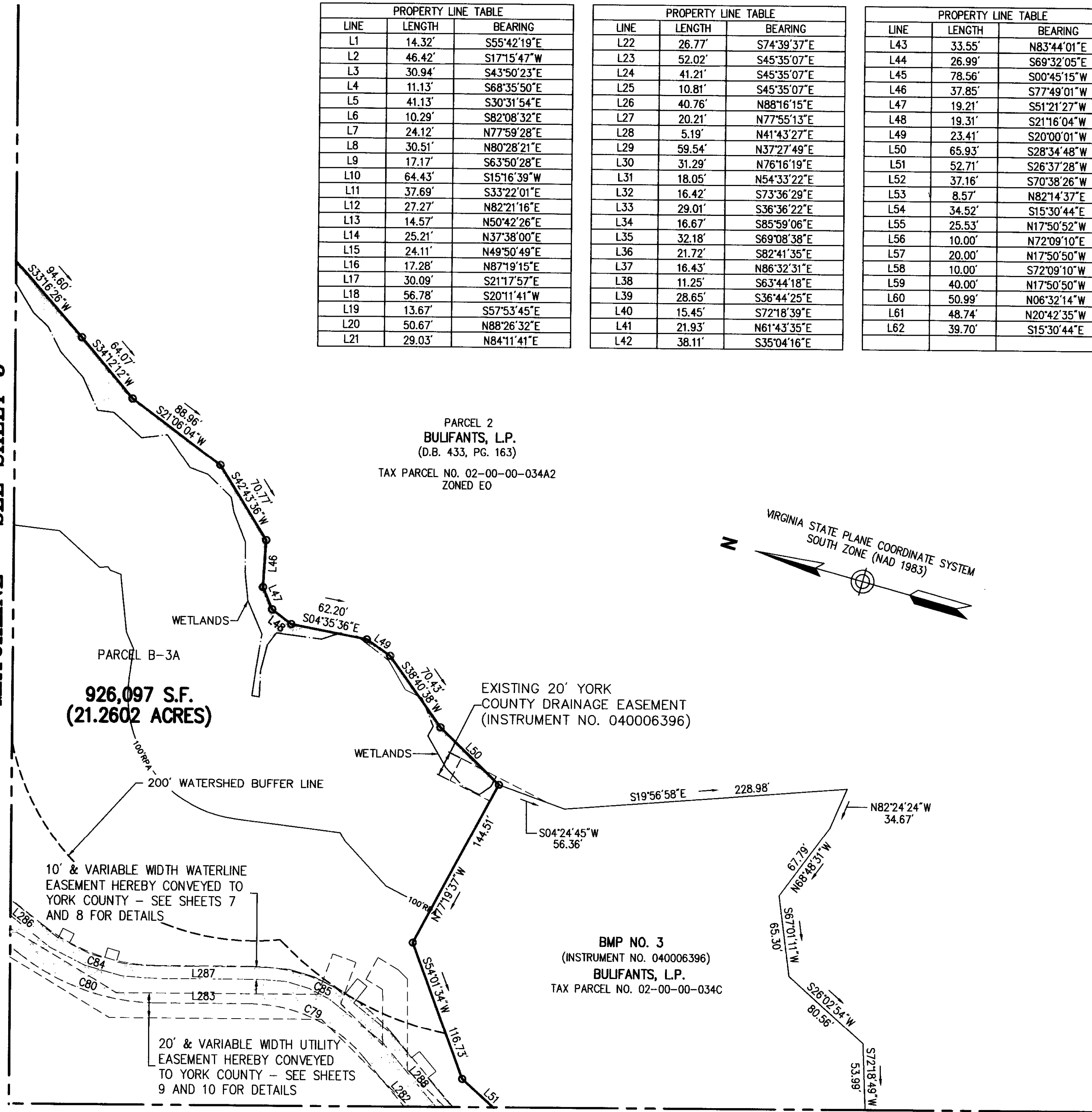


LINE	LENGTH	BEARING
L1	14.32'	S55°42'19"E
L2	46.42'	S17°15'47"W
L3	30.94'	S43°50'23"E
L4	11.13'	S68°35'50"E
L5	41.13'	S30°31'54"E
L6	10.29'	S82°08'32"E
L7	24.12'	N77°59'28"E
L8	30.51'	N80°28'21"E
L9	17.17'	S63°50'28"E
L10	64.43'	S15°16'39"W
L11	37.69'	S33°22'01"E
L12	27.27'	N82°21'16"E
L13	14.57'	N50°42'26"E
L14	25.21'	N37°38'00"E
L15	24.11'	N49°50'49"E
L16	17.28'	N87°19'15"E
L17	30.09'	S21°17'57"E
L18	56.78'	S20°11'41"W
L19	13.67'	S57°53'45"E
L20	50.67'	N88°26'32"E
L21	29.03'	N84°11'41"E

LINE	LENGTH	BEARING
L22	26.77'	S74°39'37"E
L23	52.02'	S45°35'07"E
L24	41.21'	S45°35'07"E
L25	10.81'	S45°35'07"E
L26	40.76'	N88°16'15"E
L27	20.21'	N77°55'13"E
L28	5.19'	N41°43'27"E
L29	59.54'	N37°27'49"E
L30	31.29'	N76°16'19"E
L31	18.05'	N54°33'22"E
L32	16.42'	S73°36'29"E
L33	29.01'	S36°36'22"E
L34	16.67'	S85°59'06"E
L35	32.18'	S69°08'38"E
L36	21.72'	S82°41'35"E
L37	16.43'	N86°32'31"E
L38	11.25'	S63°44'18"E
L39	28.65'	S36°44'25"E
L40	15.45'	S72°18'39"E
L41	21.93'	N61°43'35"E
L42	38.11'	S35°04'16"E

LINE	LENGTH	BEARING
L43	33.55'	N83°44'01"E
L44	26.99'	S69°32'05"E
L45	78.56'	S00°45'15"W
L46	37.85'	S77°49'01"W
L47	19.21'	S51°21'27"W
L48	19.31'	S21°16'04"W
L49	23.41'	S20°00'01"W
L50	65.93'	S28°34'48"W
L51	52.71'	S26°37'28"W
L52	37.16'	S70°38'26"W
L53	8.57'	N82°14'37"E
L54	34.52'	S15°30'44"E
L55	25.53'	N17°50'52"W
L56	10.00'	N72°09'10"E
L57	20.00'	N17°50'50"W
L58	10.00'	S72°09'10"W
L59	40.00'	N17°50'50"W
L60	50.99'	N06°32'14"W
L61	48.74'	N20°42'35"W
L62	39.70'	S15°30'44"E

MATCHLINE - SEE SHEET 5



YORK COUNTY
 APPROVED FOR RECORDATION
 BY: *Al. [Signature]*
 CHIEF OF DEVELOPMENT & COMPLIANCE
 DATE: 6/6/07

State Of Virginia
 County Of York
 IN THE CLERK'S OFFICE OF THE CIRCUIT COURT FOR THE COUNTY OF YORK-POQUOSON,
 THE 7th DAY OF June, 2006 THIS MAP WAS PRESENTED AND ADMITTED
 TO RECORD AS THE LAW DIRECTS AS INSTRUMENT NUMBER **LR007013016**
 9:55AM.
 TESTE: Lynn S Jenkins
 CLERK
 BY: Archie M. Cummings, Jr.

MATCHLINE - SEE SHEET 3