

SURVEYED BY: BOB HAWKINS 05/12/2013  
 SUPERVISED BY: E.H. BYRUM 05/02/2013  
 DESIGNED BY: J.D. WAINSTEAD 05/02/2013  
 HAMPTON ROADS DISTRICT DESIGN UNIT

THESE PLANS ARE UNFINISHED  
 AND ARE NOT TO BE USED FOR  
 ANY TYPE OF CONSTRUCTION.

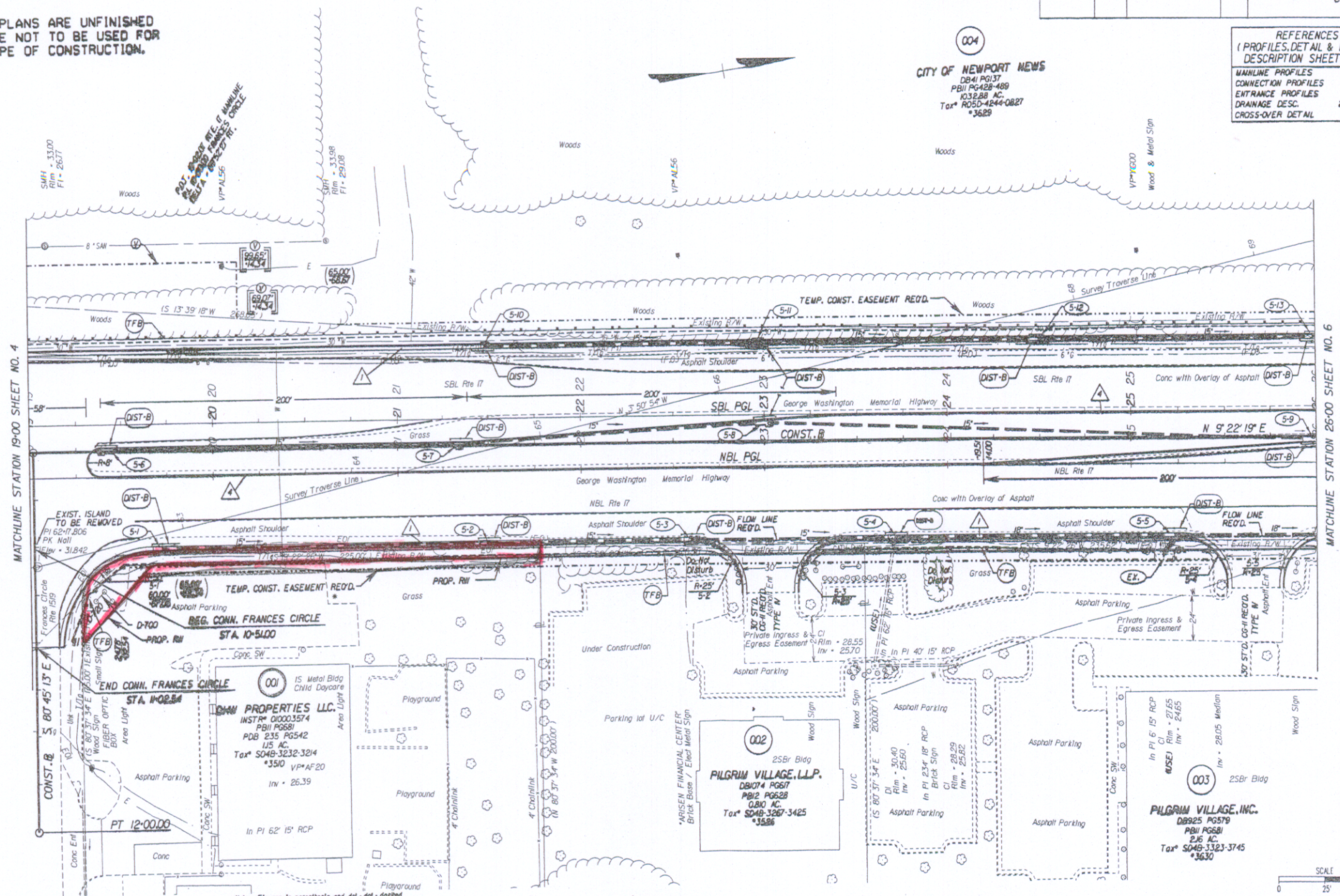
DESIGN FEATURES RELATING TO CONSTRUCTION  
 OR TO REGULATION AND CONTROL OF TRAFFIC  
 MAY BE SUBJECT TO CHANGE AS DEEMED  
 NECESSARY BY THE DEPARTMENT

DISTRICT	STATE	FEDERAL AID PROJECT	ROUTE	STATE PROJECT	SHEET NO.
	VA.		17	6017-099-129, RW-201, C-501	5

REFERENCES  
 (PROFILES, DETAIL & DRAINAGE DESCRIPTION SHEETS, ETC.)

MAINLINE PROFILES	5A
CONNECTION PROFILES	5B
ENTRANCE PROFILES	24B
DRAINAGE DESC.	24K1 - 24K7
CROSS-OVER DETAIL	2E

CITY OF NEWPORT NEWS  
 DB41 PG137  
 PB11 PG428-469  
 033288 AC  
 Tax# R05D-4244-0827  
 \*3629



NOTE: PGL DENOTES PROFILE GRADE LINE  
 NOTE: SEE GENERAL NOTES FOR E&S LEGEND  
 ○ DENOTES DRAINAGE STRUCTURE NUMBER

Note: Figures in parenthesis and dot-dash lines denote Temporary Easements.  
 Note: Figures in brackets and dot-dashed lines denote Permanent Easements.  
 V Denotes variable easement required for Verizon Virginia

C Denotes Construction Limits in Cuts  
 F Denotes Construction Limits in Fills

▲ ST'D. CG-7 REQ'D.  
 ▲ ST'D. WS-2 REQ'D.

MATCHLINE STATION 19+00 SHEET NO. 4

PLAN NO.	PROJECT	FILE NO.	SHEET NO.
	6017-099-129		5

MATCHLINE STATION 26+00 SHEET NO. 6

State Hwy Plat Book No. 10  
 C 070017848

