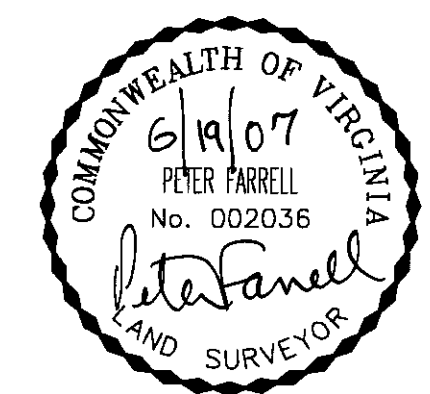
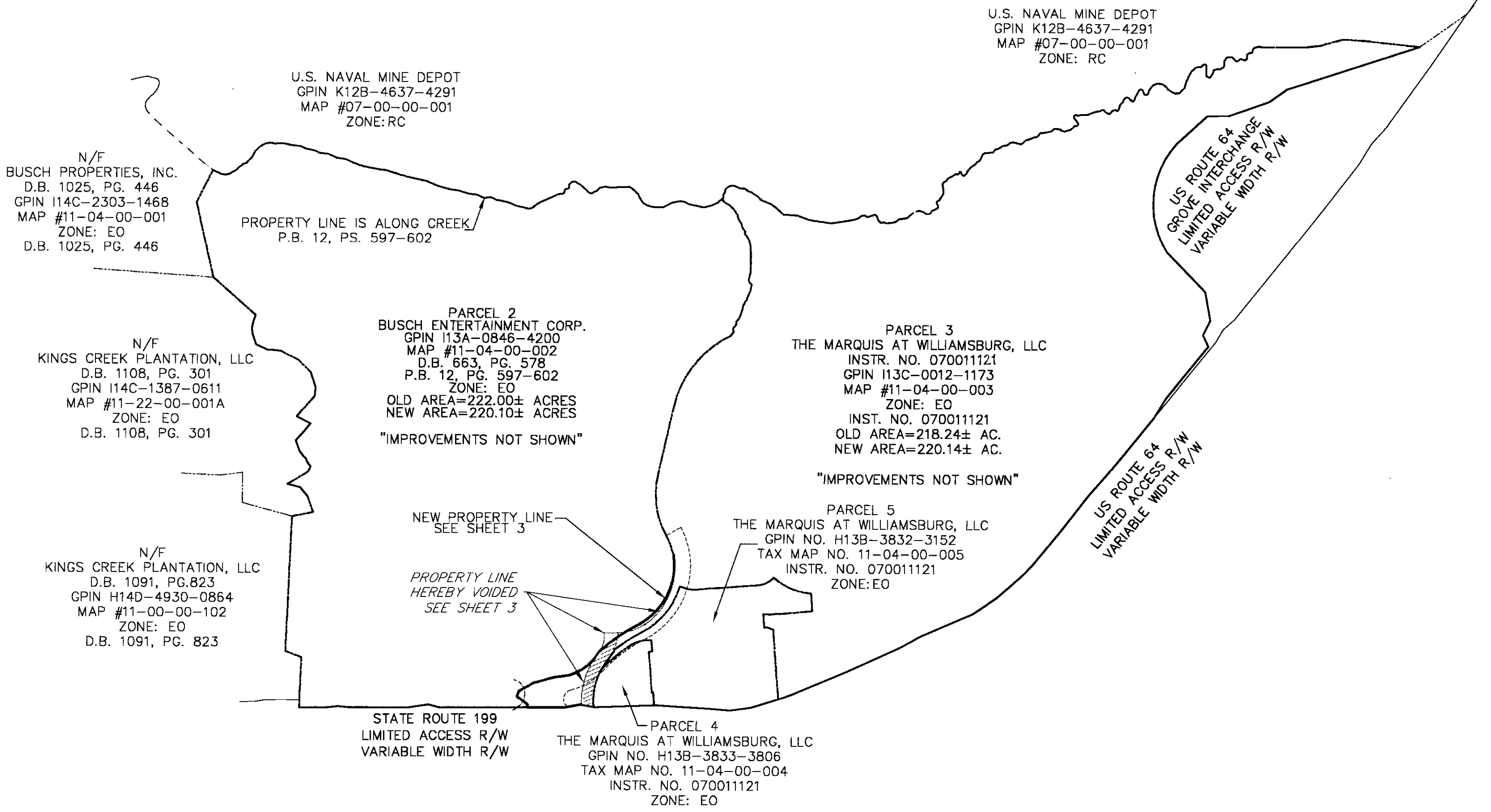
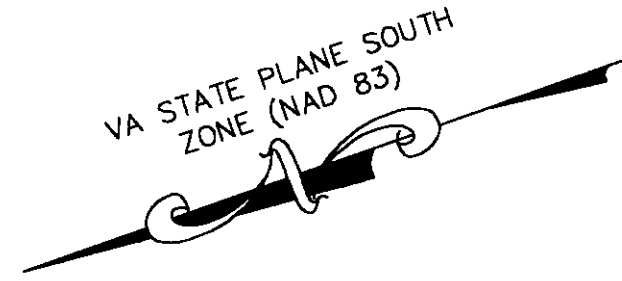


PLAT SHOWING BOUNDARY LINE ADJUSTMENT OF THE
 PROPERTIES OF
THE MARQUIS AT WILLIAMSBURG, LLC,
 AN INDIANA LIMITED LIABILITY
 COMPANY
 AND
BUSCH ENTERTAINMENT CORPORATION,
 A DELAWARE CORPORATION
 BEING A RESUBDIVISION OF
PARCEL 2 AND PARCEL 3
WHITTAKERS MILL TRACT
 (P.B. 12, PGS. 597-602)

BRUTON DISTRICT, YORK COUNTY, VIRGINIA
 SCALE: 1"=600' DATE: 06/18/07
 SHEET 2 OF 3

**LANDMARK
 DESIGN GROUP**

Engineers • Planners • Surveyors
 Landscape Architects • Environmental Consultants
 4029 IRONBOUND ROAD SUITE 100
 WILLIAMSBURG, VIRGINIA 23188
 (757) 253-2975 FAX: (757) 229-0049



2007 SEP -5 AM 9:40

N/F
 KINGS CREEK PLANTATION, LLC
 D.B. 1091, PG. 823
 GPIN H14D-4930-0864
 MAP #11-00-00-102
 ZONE: EO
 D.B. 1091, PG. 823

N/F
 KINGS CREEK PLANTATION, LLC
 D.B. 1108, PG. 301
 GPIN I14C-1387-0611
 MAP #11-22-00-001A
 ZONE: EO
 D.B. 1108, PG. 301

N/F
 BUSCH PROPERTIES, INC.
 D.B. 1025, PG. 446
 GPIN I14C-2303-1468
 MAP #11-04-00-001
 ZONE: EO
 D.B. 1025, PG. 446

PARCEL 4
 THE MARQUIS AT WILLIAMSBURG, LLC
 GPIN NO. H13B-3833-3806
 TAX MAP NO. 11-04-00-004
 INSTR. NO. 07001121
 ZONE: EO

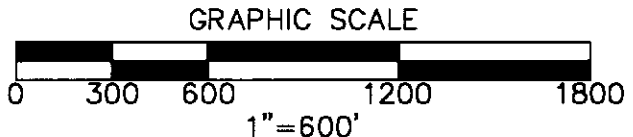
PARCEL 5
 THE MARQUIS AT WILLIAMSBURG, LLC
 GPIN NO. H13B-3832-3152
 TAX MAP NO. 11-04-00-005
 INSTR. NO. 07001121
 ZONE: EO

PARCEL 3
 THE MARQUIS AT WILLIAMSBURG, LLC
 INSTR. NO. 07001121
 GPIN I13C-0012-1173
 MAP #11-04-00-003
 ZONE: EO
 INST. NO. 07001121
 OLD AREA=218.24± AC.
 NEW AREA=220.14± AC.
 "IMPROVEMENTS NOT SHOWN"

PARCEL 2
 BUSCH ENTERTAINMENT CORP.
 GPIN I13A-0846-4200
 MAP #11-04-00-002
 D.B. 663, PG. 578
 P.B. 12, PG. 597-602
 ZONE: EO
 OLD AREA=222.00± ACRES
 NEW AREA=220.10± ACRES
 "IMPROVEMENTS NOT SHOWN"

U.S. NAVAL MINE DEPOT
 GPIN K12B-4637-4291
 MAP #07-00-00-001
 ZONE: RC

U.S. NAVAL MINE DEPOT
 GPIN K12B-4637-4291
 MAP #07-00-00-001
 ZONE: RC



REFERENCES:
 P.B. 12, PGS. 597-602
 D.B. 663, PG. 578

APPROVED:
 YORK COUNTY BOARD OF SUPERVISORS
 BY: Al Meddallina
 PLAT APPROVING AGENT
 DATE: 9/5/07

STATE OF VIRGINIA, COUNTY OF YORK
 IN THE CLERK'S OFFICE OF THE CIRCUIT COURT FOR THE
 COUNTY OF YORK-POQUOSON THE 5th DAY OF
Sept 2007, THIS MAP WAS PRESENTED AND
 ADMITTED TO RECORD AS THE LAW DIRECTS AS 9:40am
 INSTRUMENT NO. LR070021611
 TESTE: Lynn S Jenkins
 CLERK
 BY: Archie M. Cummings, Jr.