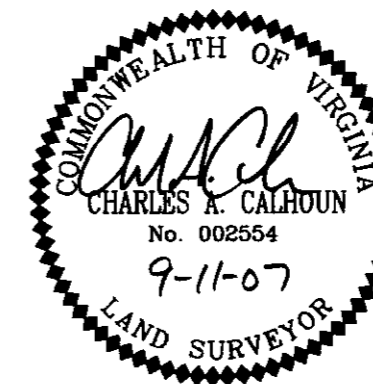


SUBDIVISION PLAT OF
RIVERWALK TOWNES
PHASE I

NELSON MAGISTERIAL DISTRICT
YORK COUNTY, VIRGINIA

DATE: 4/24/07 SCALE: 1"=100' JOB #07-130
REV: 7/23/07

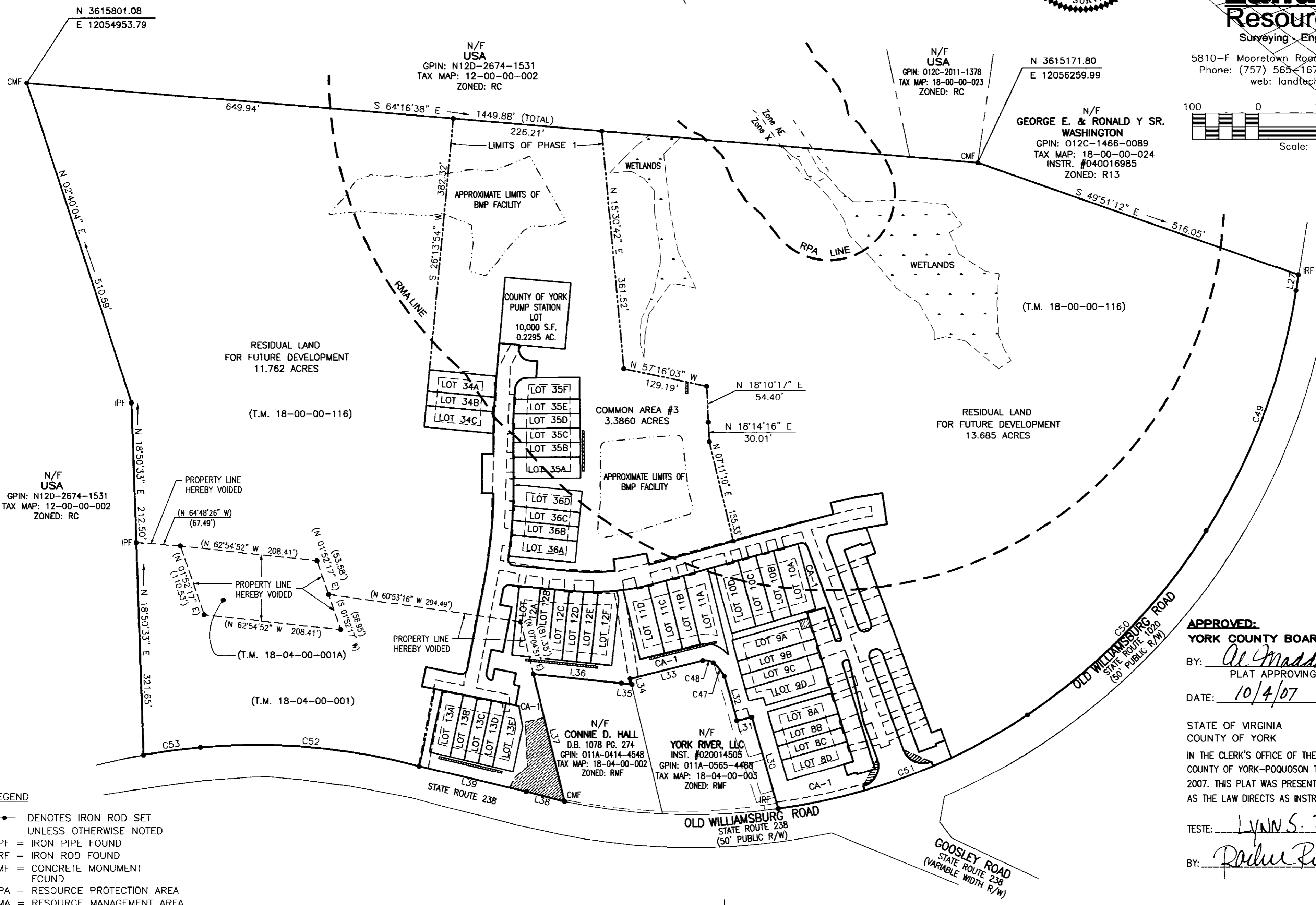
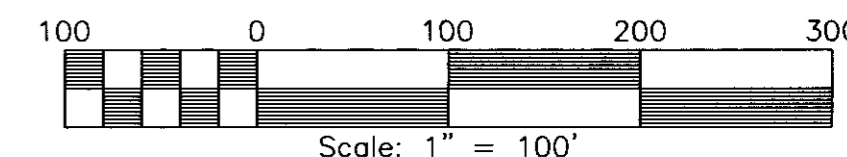
SHEET 2 OF 5



LandTech
Resources, Inc.

Surveying · Engineering · GPS

5810-F Mooretown Road, Williamsburg, VA 23188
Phone: (757) 565-1677 Fax: (757) 565-0782
web: landtechresources.com



- LEGEND**
- DENOTES IRON ROD SET UNLESS OTHERWISE NOTED
 - IPF = IRON PIPE FOUND
 - IRF = IRON ROD FOUND
 - CMF = CONCRETE MONUMENT FOUND
 - RPA = RESOURCE PROTECTION AREA
 - RMA = RESOURCE MANAGEMENT AREA

APPROVED:
YORK COUNTY BOARD OF SUPERVISORS

BY: *Al Maddalena*
PLAT APPROVING AGENT
DATE: 10/4/07

STATE OF VIRGINIA
COUNTY OF YORK
IN THE CLERK'S OFFICE OF THE CIRCUIT COURT FOR THE COUNTY OF YORK-POQUOSON THE 17th DAY OF Oct 2007. THIS PLAT WAS PRESENTED AND ADMITTED TO RECORD AS THE LAW DIRECTS AS INSTRUMENT NO. 0700 24151

TESTE: *Lynn S. Jenkins* 3:26 pm
CLERK
BY: *Rodney Presber*