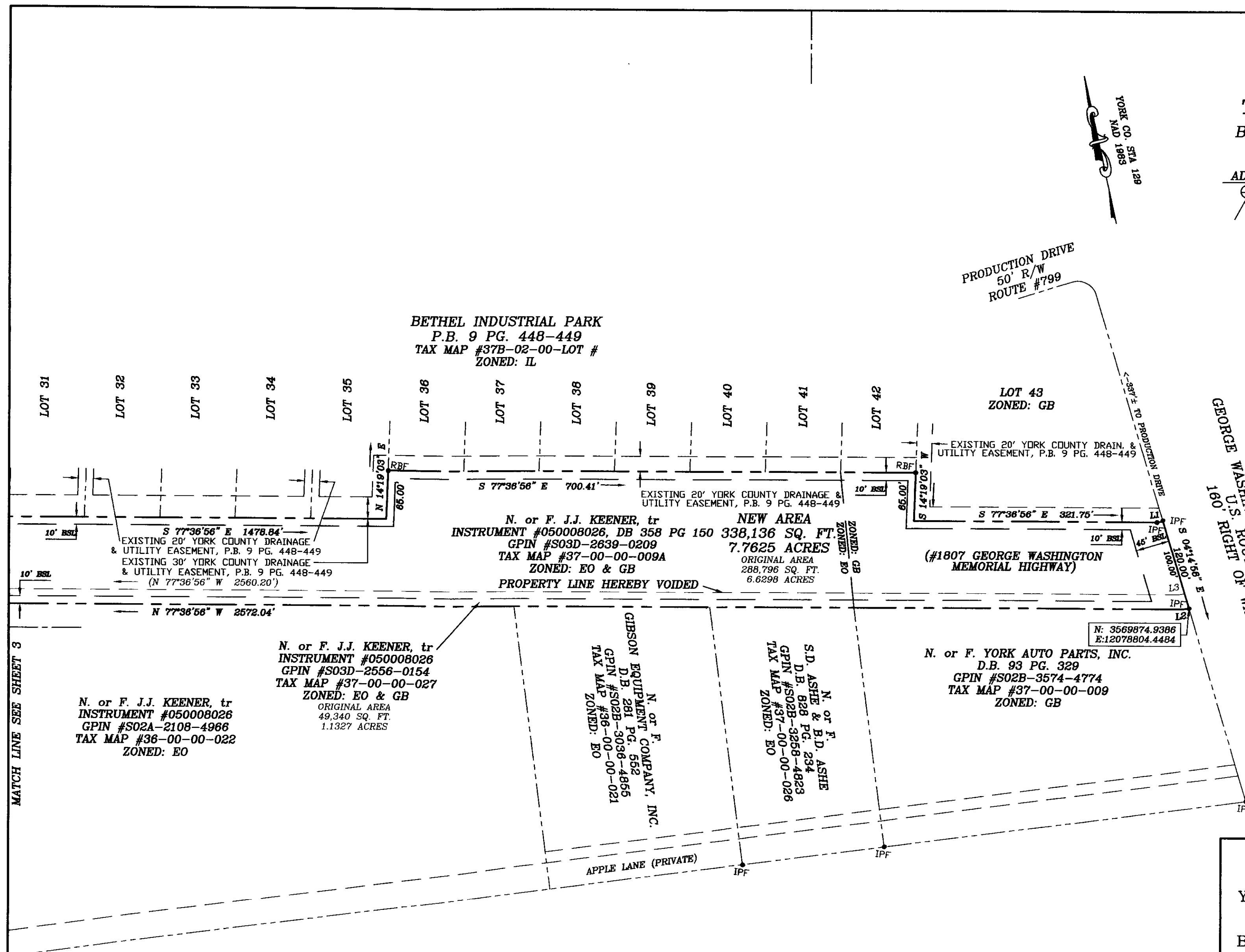


COMPILED PLAT SHOWING A PROPERTY LINE VACATION BETWEEN THE PROPERTIES OF JEANETTE J. KEENER, TRUSTEE OF THE FAMILY TRUST BETHEL DISTRICT, YORK COUNTY, VIRGINIA MAY 14, 2007, REV. AUGUST 7, 2007

ADPA A.D. POTTS & ASSOCIATES, INC. 11524 JEFFERSON AVENUE NEWPORT NEWS, VIRGINIA 23601 PHONE: (757) 595-4610



SCALE: 1"=100' SHEET 2 OF 3



LINE	BEARING	DISTANCE
L1	S 85°44'56" E	8.33'
L2	N 86°44'56" W	8.33'
L3	S 85°44'56" E	8.33'

MATCH LINE SEE SHEET 3

GEORGE WASHINGTON MEMORIAL HIGHWAY U.S. ROUTE #17 160' RIGHT OF WAY

APPROVED

YORK COUNTY BOARD OF SUPERVISORS

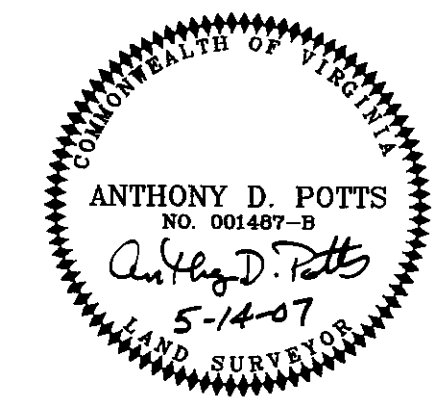
BY: Al Maddalena
PLAT APPROVING AGENT

DATE: 10/26/07

STATE OF VIRGINIA
 COUNTY OF YORK
 IN THE CLERK'S OFFICE OF THE CIRCUIT COURT FOR THE COUNTY OF YORK-POQUOSON, ON THIS 29th DAY OF October, 2007, THIS MAP WAS PRESENTED AND ADMITTED TO RECORD AS THE LAW DIRECTS, AS INSTRUMENT NUMBER 070025654 2:20 pm

TESTE: Lynn S. Mendibur
CLERK

BY: Rachael Presbuck
DEPUTY CLERK



FB 899 KEENER-VACATE.DWG JOB NO. 07-098

2007 OCT 29 PM 2:20

FILE NO. 10-1145