

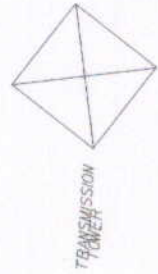
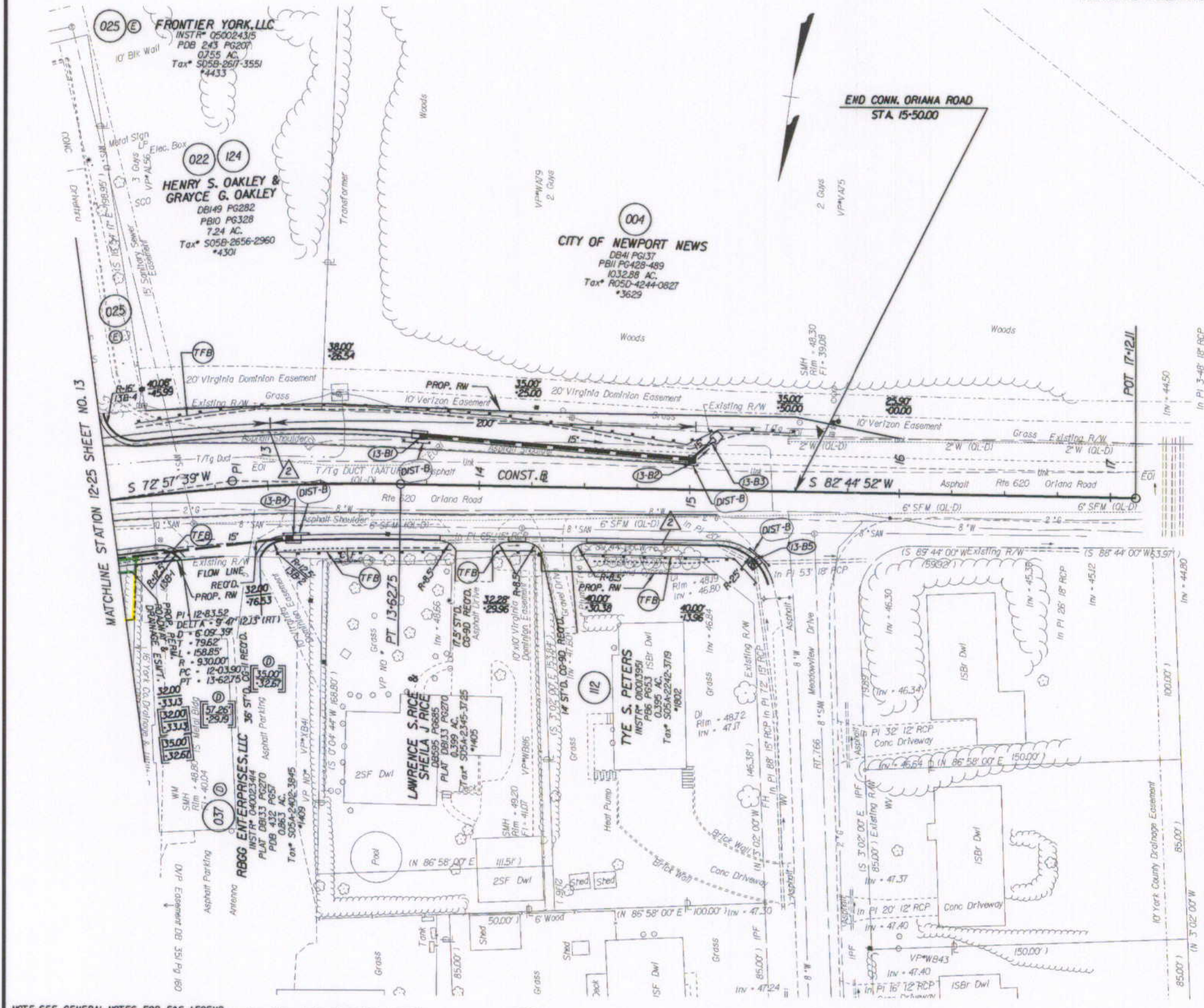
SURVEYED BY: BOB HARRON (751) 253-937  
 SUPERVISED BY: P.H. BYRUM (751) 925-2557  
 DESIGNED BY: M.D. WINSTEAD (751) 925-2556  
 HAMPTON ROADS DISTRICT DESIGN UNIT

DESIGN FEATURES RELATING TO CONSTRUCTION OR TO REGULATION AND CONTROL OF TRAFFIC MAY BE SUBJECT TO CHANGE AS DEEMED NECESSARY BY THE DEPARTMENT

REVISED	STATE	FEDERAL AID PROJECT	ROUTE	STATE PROJECT	SHEET NO.
02/15/07 09/13/07	VA.		17	6017-099-129, RW-201, C-501	13B

REFERENCES  
 (PROFILES, DETAIL & DRAINAGE DESCRIPTION SHEETS, ETC.)

CONNECTION PROFILES	13D
ENTRANCE PROFILES	24J
DRAINAGE DESC.	2HD - 2HT7



State Hwy Plat Book # 10 Pg 185  
 LR070025793

THESE PLANS ARE UNFINISHED AND ARE NOT TO BE USED FOR ANY TYPE OF CONSTRUCTION.



NOTE: SEE GENERAL NOTES FOR E&S LEGEND  
 Note: Figures in brackets and dot-dashed lines denote Permanent Easements.  
 ( ) DENOTES DRAINAGE STRUCTURE NUMBER ( ) Denotes variable easement required for Dominion Virginia Power  
 [---] Denotes Construction Limits In Cuts  
 [---] Denotes Construction Limits In Fills  
 ST'D. CG-6 REG'D.

PLAN NO.	PROJECT	FILE NO.	SHEET NO.
	6017-099-129		13B