

VICINITY MAP  
(1:12)

**LEGEND**

- CIP - CONC. MONUMENT FOUND
- IR/FF - IRON ROD FOUND / IRON PIPE FOUND
- IR - IRON ROD SET
- CIRC. PT. - CALCULATED POINT
- FLK - PLAT BOOK
- BLK - BLOCK
- INSTR. - INSTRUMENT
- SA - SURVEY MONUMENT
- OVERHEAD TRANSMISSION LINE
- PP - POWER POLE (TOP)
- ML - MOUNDING LANDING LINE
- SL - SURFACE SET
- 1/4" - RIGHT-OF-WAY

**WETLAND DELINEATION**

LINE	BEARING/DISTANCE	LINE	BEARING/DISTANCE
A1-A1	S29°19'33"E 31.0'	B1-B1	N29°19'33"E 31.0'
A2-A2	S29°19'33"E 31.0'	B2-B2	N29°19'33"E 31.0'
A3-A3	S29°19'33"E 31.0'	B3-B3	N29°19'33"E 31.0'
A4-A4	S29°19'33"E 31.0'	B4-B4	N29°19'33"E 31.0'
A5-A5	S29°19'33"E 31.0'	B5-B5	N29°19'33"E 31.0'
A6-A6	S29°19'33"E 31.0'	B6-B6	N29°19'33"E 31.0'
A7-A7	S29°19'33"E 31.0'	B7-B7	N29°19'33"E 31.0'
A8-A8	S29°19'33"E 31.0'	B8-B8	N29°19'33"E 31.0'
A9-A9	S29°19'33"E 31.0'	B9-B9	N29°19'33"E 31.0'
A10-A10	S29°19'33"E 31.0'	B10-B10	N29°19'33"E 31.0'
A11-A11	S29°19'33"E 31.0'	B11-B11	N29°19'33"E 31.0'
A12-A12	S29°19'33"E 31.0'	B12-B12	N29°19'33"E 31.0'
A13-A13	S29°19'33"E 31.0'	B13-B13	N29°19'33"E 31.0'
A14-A14	S29°19'33"E 31.0'	B14-B14	N29°19'33"E 31.0'
A15-A15	S29°19'33"E 31.0'	B15-B15	N29°19'33"E 31.0'
A16-A16	S29°19'33"E 31.0'	B16-B16	N29°19'33"E 31.0'
A17-A17	S29°19'33"E 31.0'	B17-B17	N29°19'33"E 31.0'
A18-A18	S29°19'33"E 31.0'	B18-B18	N29°19'33"E 31.0'
A19-A19	S29°19'33"E 31.0'	B19-B19	N29°19'33"E 31.0'
A20-A20	S29°19'33"E 31.0'	B20-B20	N29°19'33"E 31.0'
A21-A21	S29°19'33"E 31.0'	B21-B21	N29°19'33"E 31.0'
A22-A22	S29°19'33"E 31.0'	B22-B22	N29°19'33"E 31.0'
A23-A23	S29°19'33"E 31.0'	B23-B23	N29°19'33"E 31.0'
A24-A24	S29°19'33"E 31.0'	B24-B24	N29°19'33"E 31.0'
A25-A25	S29°19'33"E 31.0'	B25-B25	N29°19'33"E 31.0'
A26-A26	S29°19'33"E 31.0'	B26-B26	N29°19'33"E 31.0'
A27-A27	S29°19'33"E 31.0'	B27-B27	N29°19'33"E 31.0'
A28-A28	S29°19'33"E 31.0'	B28-B28	N29°19'33"E 31.0'
A29-A29	S29°19'33"E 31.0'	B29-B29	N29°19'33"E 31.0'
A30-A30	S29°19'33"E 31.0'	B30-B30	N29°19'33"E 31.0'
A31-A31	S29°19'33"E 31.0'	B31-B31	N29°19'33"E 31.0'
A32-A32	S29°19'33"E 31.0'	B32-B32	N29°19'33"E 31.0'
A33-A33	S29°19'33"E 31.0'	B33-B33	N29°19'33"E 31.0'
A34-A34	S29°19'33"E 31.0'	B34-B34	N29°19'33"E 31.0'
A35-A35	S29°19'33"E 31.0'	B35-B35	N29°19'33"E 31.0'
A36-A36	S29°19'33"E 31.0'	B36-B36	N29°19'33"E 31.0'
A37-A37	S29°19'33"E 31.0'	B37-B37	N29°19'33"E 31.0'
A38-A38	S29°19'33"E 31.0'	B38-B38	N29°19'33"E 31.0'
A39-A39	S29°19'33"E 31.0'	B39-B39	N29°19'33"E 31.0'
A40-A40	S29°19'33"E 31.0'	B40-B40	N29°19'33"E 31.0'
A41-A41	S29°19'33"E 31.0'	B41-B41	N29°19'33"E 31.0'
A42-A42	S29°19'33"E 31.0'	B42-B42	N29°19'33"E 31.0'
A43-A43	S29°19'33"E 31.0'	B43-B43	N29°19'33"E 31.0'
A44-A44	S29°19'33"E 31.0'	B44-B44	N29°19'33"E 31.0'
A45-A45	S29°19'33"E 31.0'	B45-B45	N29°19'33"E 31.0'
A46-A46	S29°19'33"E 31.0'	B46-B46	N29°19'33"E 31.0'
A47-A47	S29°19'33"E 31.0'	B47-B47	N29°19'33"E 31.0'
A48-A48	S29°19'33"E 31.0'	B48-B48	N29°19'33"E 31.0'
A49-A49	S29°19'33"E 31.0'	B49-B49	N29°19'33"E 31.0'
A50-A50	S29°19'33"E 31.0'	B50-B50	N29°19'33"E 31.0'
A51-A51	S29°19'33"E 31.0'	B51-B51	N29°19'33"E 31.0'
A52-A52	S29°19'33"E 31.0'	B52-B52	N29°19'33"E 31.0'
A53-A53	S29°19'33"E 31.0'	B53-B53	N29°19'33"E 31.0'
A54-A54	S29°19'33"E 31.0'	B54-B54	N29°19'33"E 31.0'
A55-A55	S29°19'33"E 31.0'	B55-B55	N29°19'33"E 31.0'
A56-A56	S29°19'33"E 31.0'	B56-B56	N29°19'33"E 31.0'
A57-A57	S29°19'33"E 31.0'	B57-B57	N29°19'33"E 31.0'
A58-A58	S29°19'33"E 31.0'	B58-B58	N29°19'33"E 31.0'
A59-A59	S29°19'33"E 31.0'	B59-B59	N29°19'33"E 31.0'
A60-A60	S29°19'33"E 31.0'	B60-B60	N29°19'33"E 31.0'
A61-A61	S29°19'33"E 31.0'	B61-B61	N29°19'33"E 31.0'
A62-A62	S29°19'33"E 31.0'	B62-B62	N29°19'33"E 31.0'
A63-A63	S29°19'33"E 31.0'	B63-B63	N29°19'33"E 31.0'
A64-A64	S29°19'33"E 31.0'	B64-B64	N29°19'33"E 31.0'
A65-A65	S29°19'33"E 31.0'	B65-B65	N29°19'33"E 31.0'
A66-A66	S29°19'33"E 31.0'	B66-B66	N29°19'33"E 31.0'
A67-A67	S29°19'33"E 31.0'	B67-B67	N29°19'33"E 31.0'
A68-A68	S29°19'33"E 31.0'	B68-B68	N29°19'33"E 31.0'
A69-A69	S29°19'33"E 31.0'	B69-B69	N29°19'33"E 31.0'
A70-A70	S29°19'33"E 31.0'	B70-B70	N29°19'33"E 31.0'
A71-A71	S29°19'33"E 31.0'	B71-B71	N29°19'33"E 31.0'
A72-A72	S29°19'33"E 31.0'	B72-B72	N29°19'33"E 31.0'
A73-A73	S29°19'33"E 31.0'	B73-B73	N29°19'33"E 31.0'
A74-A74	S29°19'33"E 31.0'	B74-B74	N29°19'33"E 31.0'
A75-A75	S29°19'33"E 31.0'	B75-B75	N29°19'33"E 31.0'
A76-A76	S29°19'33"E 31.0'	B76-B76	N29°19'33"E 31.0'
A77-A77	S29°19'33"E 31.0'	B77-B77	N29°19'33"E 31.0'
A78-A78	S29°19'33"E 31.0'	B78-B78	N29°19'33"E 31.0'
A79-A79	S29°19'33"E 31.0'	B79-B79	N29°19'33"E 31.0'
A80-A80	S29°19'33"E 31.0'	B80-B80	N29°19'33"E 31.0'
A81-A81	S29°19'33"E 31.0'	B81-B81	N29°19'33"E 31.0'
A82-A82	S29°19'33"E 31.0'	B82-B82	N29°19'33"E 31.0'
A83-A83	S29°19'33"E 31.0'	B83-B83	N29°19'33"E 31.0'
A84-A84	S29°19'33"E 31.0'	B84-B84	N29°19'33"E 31.0'
A85-A85	S29°19'33"E 31.0'	B85-B85	N29°19'33"E 31.0'
A86-A86	S29°19'33"E 31.0'	B86-B86	N29°19'33"E 31.0'
A87-A87	S29°19'33"E 31.0'	B87-B87	N29°19'33"E 31.0'
A88-A88	S29°19'33"E 31.0'	B88-B88	N29°19'33"E 31.0'
A89-A89	S29°19'33"E 31.0'	B89-B89	N29°19'33"E 31.0'
A90-A90	S29°19'33"E 31.0'	B90-B90	N29°19'33"E 31.0'
A91-A91	S29°19'33"E 31.0'	B91-B91	N29°19'33"E 31.0'
A92-A92	S29°19'33"E 31.0'	B92-B92	N29°19'33"E 31.0'
A93-A93	S29°19'33"E 31.0'	B93-B93	N29°19'33"E 31.0'
A94-A94	S29°19'33"E 31.0'	B94-B94	N29°19'33"E 31.0'
A95-A95	S29°19'33"E 31.0'	B95-B95	N29°19'33"E 31.0'
A96-A96	S29°19'33"E 31.0'	B96-B96	N29°19'33"E 31.0'
A97-A97	S29°19'33"E 31.0'	B97-B97	N29°19'33"E 31.0'
A98-A98	S29°19'33"E 31.0'	B98-B98	N29°19'33"E 31.0'
A99-A99	S29°19'33"E 31.0'	B99-B99	N29°19'33"E 31.0'
A100-A100	S29°19'33"E 31.0'	B100-B100	N29°19'33"E 31.0'

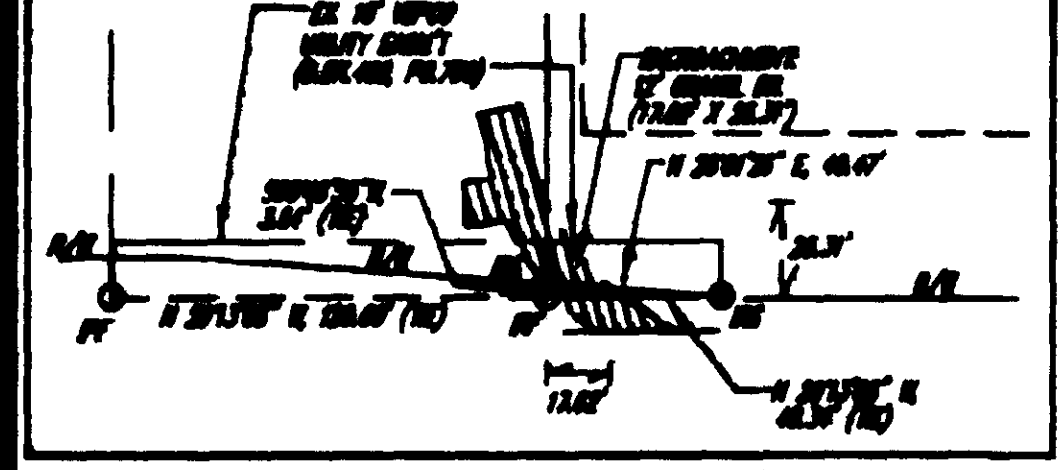
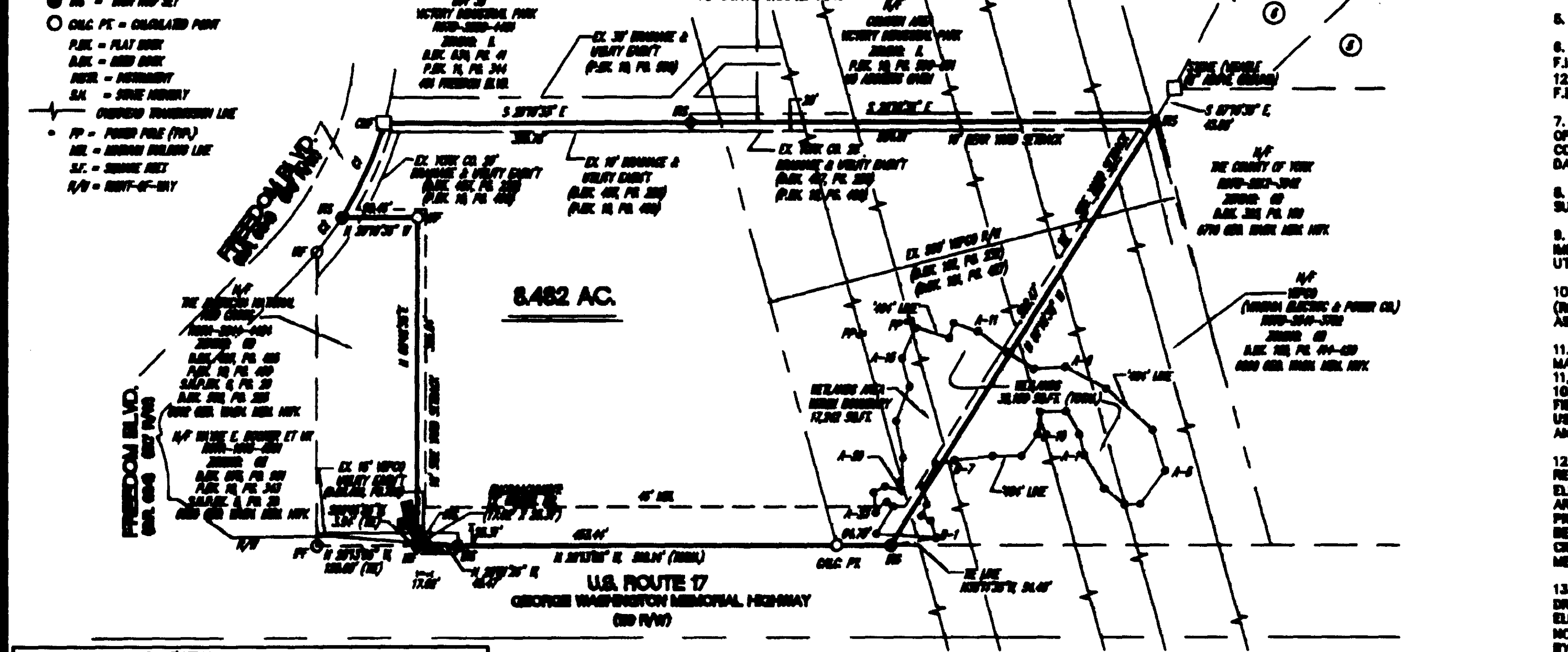
**LEGAL DESCRIPTION**

ALL THAT CERTAIN LOT, PIECE OR PARCEL OF LAND SITUATE, LYING AND BEING IN GRAFTON DISTRICT, YORK COUNTY, VIRGINIA, CONTAINING 8.482 ACRES, AND MORE PARTICULARLY DESCRIBED AS FOLLOWS: BEGINNING AT A SET IRON ROD LOCATED IN THE EASTERN RIGHT-OF-WAY OF US ROUTE 17 (THE GEORGE WASHINGTON MEMORIAL HIGHWAY), SAID ROD ALSO BEING THE NORTHWESTERN CORNER OF THE VIRGINIA ELECTRIC & POWER COMPANY (VEPCO); THENCE ALONG THE EASTERN RIGHT-OF-WAY OF US ROUTE 17, N29°19'33"W, 818.14' TO A SET IRON ROD; CONTINUING N29°01'30"W, 48.47' TO A SET IRON ROD; TURNING, AND WITH THE LINE OF THE AMERICAN NATIONAL RED CROSS, N80°46'30"E, 388.84' TO AN IRON ROD FOUND; THENCE N29°19'33"W, 80.48' TO AN IRON ROD SET IN THE SOUTHERN RIGHT-OF-WAY OF STATE ROUTE 634; THENCE WITH THE RIGHT-OF-WAY, ALONG A CURVE CIRCUMVENTING TO THE LEFT, ARC LENGTH OF 122.70', RADIUS OF 421.87', AND A CHORD OF N89°19'30"E, 122.27' TO A CONCRETE MONUMENT FOUND; THENCE TURNING, AND WITH THE SOUTHERN LINE OF THE VICTORY INDUSTRIAL PARK, S29°19'33"E, 388.78' TO AN IRON ROD SET; CONTINUING, S29°19'33"E, 88.48' TO AN IRON ROD SET, BEING THE COMMON CORNER WITH THE VICTORY INDUSTRIAL PARK, COUNTY OF YORK, AND VEPCO; THENCE WITH THE LINE OF VEPCO, N87°19'30"W, 882.47' TO AN IRON ROD SET, THE POINT OF BEGINNING.

BEING THE SAME PROPERTY SHOWN AS PARCEL B, ON THE PLAT ENTITLED "SUBDIVISION OF PROPERTIES OF CHARLES FRANKLIN MOORE, ET. AL.," DATED JUNE 8, 1987, BY THE SPRINE GROUP, LTD., AND RECORDED IN THE CLERK'S OFFICE OF THE CIRCUIT COURT FOR THE COUNTY OF YORK, VIRGINIA ON SEPTEMBER 21, 1987 IN PLAT BOOK 10, AT PAGE 400, LESS AND EXCEPT ALL THAT CERTAIN PROPERTY DESCRIBED IN DEED BOOK 502, PAGE 228 CONVEYED TO THE COMMONWEALTH OF VIRGINIA, FOR A TURN LANE FROM US ROUTE 17 TO STATE ROUTE 634.

Filed in the Clerk's Office, Circuit Court,  
York Co., Poquoson, VA  
on the 20<sup>th</sup> day of Nov, 2007  
Attest: Lynn S. Mendibur, Clerk 12:59 PM  
By: *William B. ...*, D.C.

- NOTES:**
- CURRENT OWNER: JOHN CARY MOORE, CHARLES FRANKLIN MOORE AND THE T.C. WILLIAMS SCHOOL OF LAW AT THE UNIVERSITY OF RICHMOND.
  - RECORDED REFERENCE:  
DEED BOOK 829, PAGE 182  
DEED BOOK 828, PAGE 748  
DEED BOOK 802, PAGE 228  
DEED BOOK 487, PAGE 228 (EASMT TO YORK CO.)  
DEED BOOK 482, PAGE 700 (EASMT TO VEPCO)  
DEED BOOK 126, PAGE 277 (EASMT TO VEPCO, NOT PLOTTABLE, UNSPECIFIED WIDTH & LOCATION)  
DEED BOOK 102, PAGE 232 (EASMT TO VEPCO)  
DEED BOOK 101, PAGE 427 (EASMT TO VEPCO)  
DEED BOOK 75, PAGE 386 (EASMT TO VEPCO, NOT PLOTTABLE, UNSPECIFIED WIDTH & LOCATION)  
DEED BOOK 89, PAGE 188 (EASMT TO VEPCO, NOT PLOTTABLE, UNSPECIFIED WIDTH, LOCATION)  
BASED ON 1841 R/W WIDTH OF RT. 17)  
PLAT BOOK 10, PAGE 400  
STATE HWY. PLAT BOOK 6, PAGE 21  
OFFICE OF THE CLERK OF THE CIRCUIT COURT, COUNTY OF YORK, VIRGINIA.
  - GPMM# = R07A-2388-4137, TAX MAP #24-54-8.
  - STREET ADDRESS: 8830 GEORGE WASHINGTON MEMORIAL HIGHWAY, YORKTOWN, VIRGINIA, 23062.
  - ZONING: GB, GENERAL BUSINESS.
  - PROPERTY LIES IN N.F.L.P. ZONE X. SEE F.E.M.A. F.I.R.M. #910182-00308 (WITH LOMAS), EFFECTIVE DATE 12/16/88. FLOOD ZONES SUBJECT TO CHANGE BY F.E.M.A.
  - A CURRENT TITLE REPORT WAS FURNISHED TO THIS OFFICE. SEE LAWYERS TITLE INSURANCE CORPORATION, COMMITMENT FOR TITLE INSURANCE FILE NO. 07-4833, DATED 2-16-07, 8:00 A.M.
  - THIS SURVEY IS BASED UPON A CURRENT FIELD SURVEY CONDUCTED FEBRUARY 20, & MARCH 10, 2007.
  - THIS PLAT DOES NOT SHOW ALL PHYSICAL IMPROVEMENTS OR INDICATIONS OF ABOVE GROUND UTILITIES LOCATED ON THE PROPERTY.
  - NO CHESAPEAKE BAY RESOURCE PROTECTION AREAS (RPA) APPEAR TO BE LOCATED WITHIN THIS PROPERTY, AS DEFINED BY YORK COUNTY, VIRGINIA.
  - WETLAND JURISDICTIONAL LINES DELINEATED BY MR. MARK ROMANUS, RHM & ASSOCIATES, L.L.C., ON FEBRUARY 11, 2007. WETLANDS WERE FIELD LOCATED ON MARCH 10, 2007. THE JURISDICTIONAL LINES SHOWN HAVE BEEN FIELD CONFIRMED BY MR. RANBY STEFFY, MAO, OF THE US ARMY CORPS OF ENGINEERS ON MARCH 14, 2007, AND BY CONFIRMATION LETTER 2007-1833.
  - VIRGINIA DEPT. OF HISTORIC RESOURCES, HISTORIC RESOURCES LOCATION MAPS SHOW APPROXIMATELY ELEVEN (11) ARCHITECTURAL RESOURCE AND ELEVEN (11) ARCHAEOLOGICAL SITES WITHIN 1.0 MILE OF THE PROPERTY SHOWN ON THIS PLAT. THE CLOSEST SITE BEING DHR ID#009-8016, THE C.1937 AMERICAN RED CROSS BUILDING LOCATED AT 8812 GEORGE WASHINGTON MEMORIAL HIGHWAY.
  - TRANSMISSION LINES SHOWN ARE FROM ASBUILT DRAWINGS #8-288-1-22, SHEET 3, ENTITLED "VIRGINIA ELECTRIC AND POWER CO., 23KV TRANSMISSION LINE NO. 288, YORKTOWN-HARWOODS MILL," AND PROVIDED BY DOMINION. LINES AND POLES WERE NOT FIELD LOCATED AT THE TIME OF THIS SURVEY, BUT ARE DEPICTED AS APPROXIMATE.



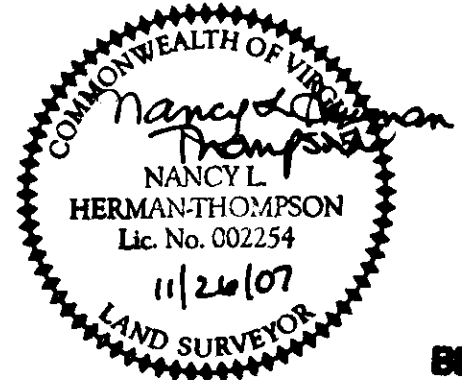
DETAIL FOR NORTHWEST CORNER  
SCALE: 1" = 80'

**CURVE TABLE**

LINE	BEARING	ARC	RADIUS	CHORD
1	S29°19'33"E	31.0'	31.0'	31.0'
2	S29°19'33"E	31.0'	31.0'	31.0'
3	S29°19'33"E	31.0'	31.0'	31.0'



YORK COUNTY  
APPROVED AS TO COMFORMANCE WITH  
EXISTING GIS DATA  
BY: Carl A. Bryant  
TITLE: Computer Support Services  
DATE: 11/26/07



BOUNDARY SURVEY  
**PARCEL B, SUBDIVISION OF PROPERTIES OF CHARLES FRANKLIN MOORE, ET. AL.**  
BEING THE SAME PROPERTY AS SHOWN IN PLAT BOOK 10, PAGE 400, LESS & EXCEPT DEED BOOK 502, PAGE 228

FOR  
**WATERS EDGE CHURCH**  
GRAFTON DISTRICT COUNTY OF YORK VIRGINIA

SCALE: 1" = 100'  
DATE: FEBRUARY 20, 2007  
DRAWN BY: NHT  
JOB NO. T07-2

NANCY HERMAN-THOMPSON, PLS  
P.O. BOX 485  
SHACKLEFORDS, VA 23185  
804-788-3891  
nht@earthlink.com

