

SURVEYED BY: BOB HARMON (1/5/12) 5137  
SUPERVISED BY: P.H. BYRUM (7/5/12) 925-2557  
DESIGNED BY: M.L. WINSTEAD (7/5/12) 925-2556  
HAMPTON ROADS DISTRICT DESIGN UNIT

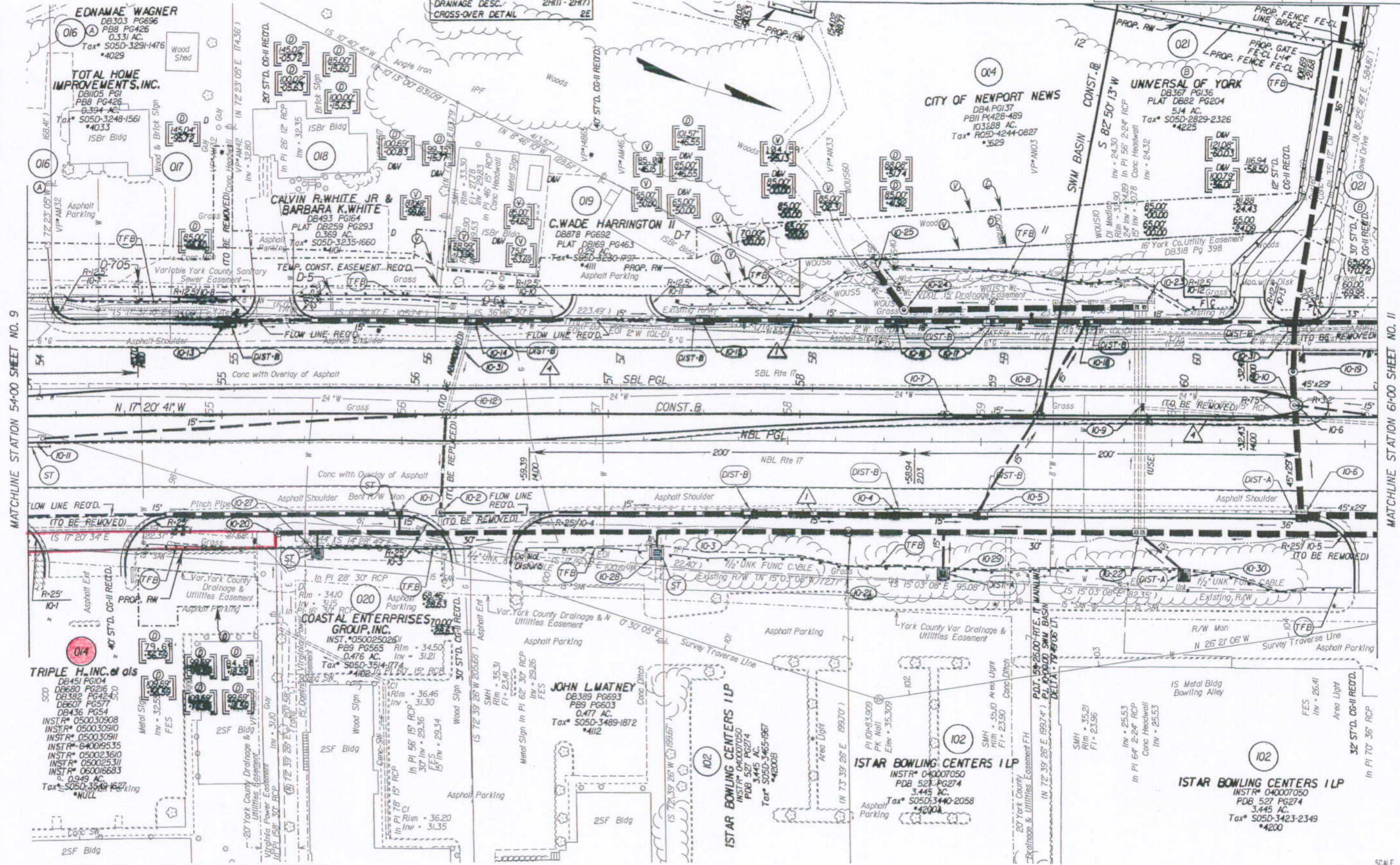
REFERENCES (PROFILES, DETAIL & DRAINAGE DESCRIPTION SHEETS, ETC.)	
MAINLINE PROFILES	10A
ENTRANCE PROFILES	24C
DRAINAGE DESC.	2H(1) - 2H(7)
CROSS-OVER DETAIL	2E

DESIGN FEATURES RELATING TO CONSTRUCTION OR TO REGULATION AND CONTROL OF TRAFFIC MAY BE SUBJECT TO CHANGE AS DEEMED NECESSARY BY THE DEPARTMENT

REVISION	STATE	FEDERAL AID PROJECT	ROUTE	STATE PROJECT	SHEET NO.
12/09/05 02/10/06 03/23/06	VA.		17	6017-099-129, RW-201, C-501	10

THESE PLANS ARE ISSUED FOR CONSTRUCTION AND ARE NOT TO BE USED FOR ANY TYPE OF CONSTRUCTION.

MATCHLINE SHEET NO. 10B



MATCHLINE STATION 54+00 SHEET NO. 9

MATCHLINE STATION 6+00 SHEET NO. 11

NOTE: PGL DENOTES PROFILE GRADE LINE  
NOTE: SEE GENERAL NOTES FOR E&S LEGEND  
DENOTES DRAINAGE STRUCTURE NUMBER

Note: Figures in brackets and dot - dashed lines denote Permanent Easements.  
Denotes variable easement required for Verizon Virginia  
Denotes variable easement required for Dominion Virginia Power

Note: Figures in parenthesis and dot - dot - dashed lines denote Temporary Easements.

Denotes Construction Limits In Cuts  
Denotes Construction Limits In Fills  
ST'D. CG-7 REO'D.  
ST'D. MS-2 REO'D.

PLAN NO.	PROJECT	FILE NO.	SHEET NO.
	6017-099-129		10

State Hwy Plat Book # 10 Pg 199  
OccInsty# 080001477